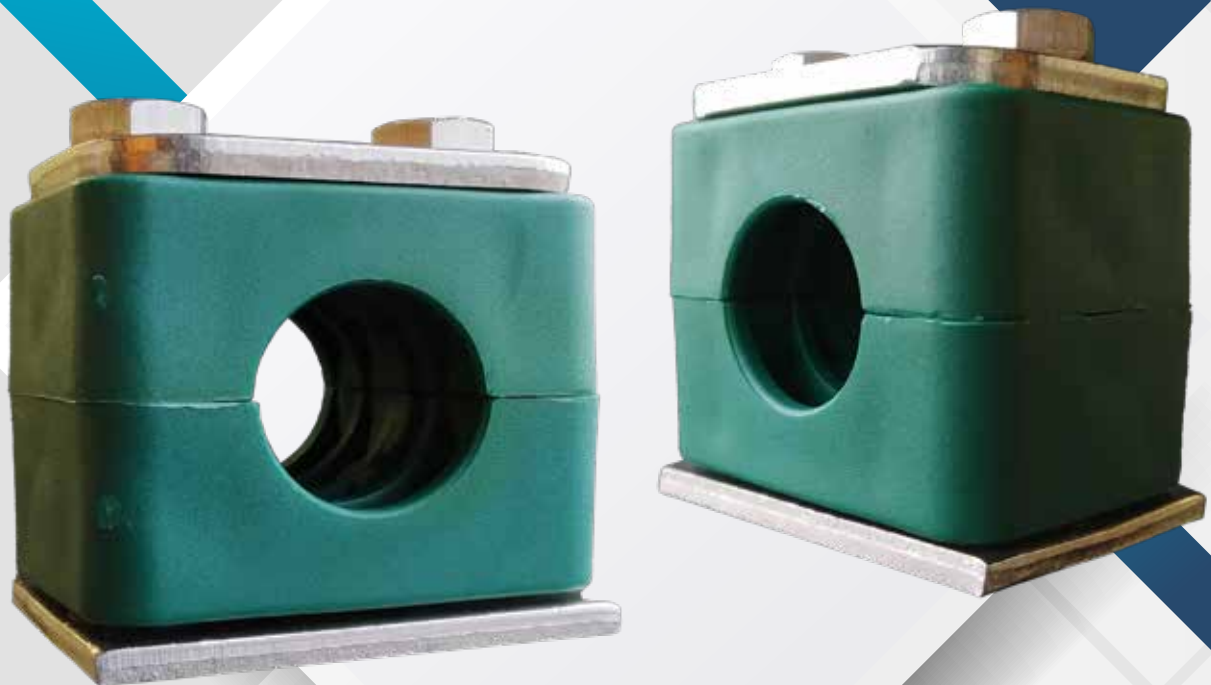


WEBSITE:

www.tubeclo.com



TUBE CLAMPS **STANDARD SERIES**

Specification

According to DIN 3015, Part 1

Size Range

- Standard Series (6 – 102mm)

Accessories Material

- Galvanized Carbon Steel ST 37 (W3)
- Stainless Steel SS316 (W5)



Standard Series Pipe Clamps

Clamp Body Material and Temperature Range

- Polypropylene, PP (-30 Deg C to 90 Deg C)
- Polyamide, PA (-40 Deg C to 120 Deg C)
- Aluminium, AL (Up to 300 Deg C)

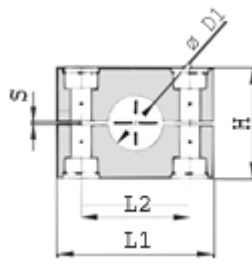
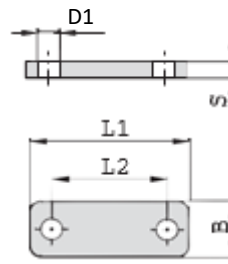
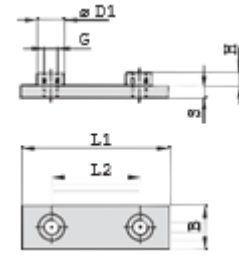
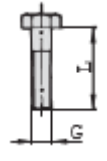
Standard Series Clamps Recommended Torque Values

Group	Polypropylene Tightening Torque (N-m)	Polypropylene Tightening Torque (ft-lb)	Polyamide Tightening Torque (N-m)	Polyamide Tightening Torque (ft-lb)	Aluminium Tightening Torque (N-m)	Aluminium Tightening Torque (ft-lb)
1	8	6	10	7	12	9
1A	8	6	10	7	12	9
2	8	6	10	7	12	9
3	8	6	10	7	12	9
4	8	6	10	7	12	9
5	8	6	10	7	12	9
6	8	6	10	7	12	9
7	8	6	10	7	12	-
8	8	6	10	7	12	-

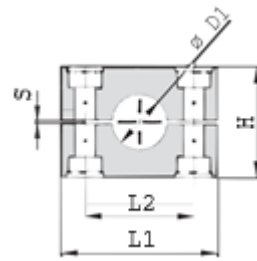
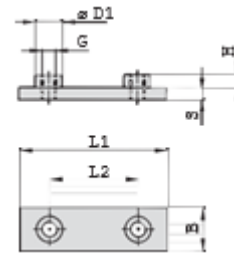
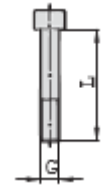
Ordering Information

PC	-	S	-	PP	-	1	-	3	-	006	-	C
I		II		III		IV		V		VI		VII

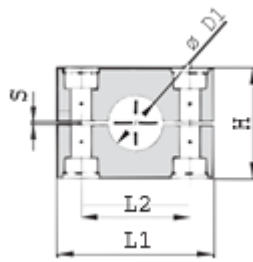
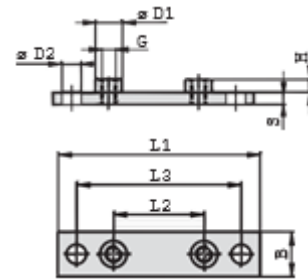
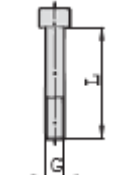
I	Type of Item	:	PC	Pipe Clamp
II	Series	:	S	Standard
III	Material of Clamp Body	:	PP PA AL	Polypropylene Polyamide Aluminium
IV	Group	:	1 2 3 4 5 6 7 8 9 10 11 12 13	Complete Set Weld Plate Only Set Elongated Weld Plate Only Set Cover Plate with Elongated Weld Plate Set Cover Plate with Rail Nut Set Cover Plate with Rail Nut Set Cover Plate with Mounting Rail and Hex Rail Nut Set Cover Plate with Channel Rail Adaptor Set Cover Plate with Mounting Rail and Channel Rail Adaptor Set Cover Plate with Locking Plate and Stacking Bolt Set Double/Tribble Stack with Locking Plate and Staking Bolt Set Cover Plate with Group Base Plate Set Cover Plate Only Set
V	Size Series	:	1 1A 2 3 4 5 6 7 8	Group 1 Group 1A Group 2 Group 3 Group 4 Group 5 Group 6 Group 7 Group 8
VI	Pipe O.D.	:	MM	Metric Size
VII	Material of Metal Parts	:	C SS	Carbon Steel Stainless Steel SS316

G1 STANDARD SERIES COMPLETE SET (CLAMP BODY + COVER PLATE + WELD PLATE + HEX BOLTS)

Clamp Body

Cover Plate

Weld Plate

Hex Bolt

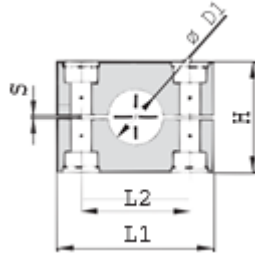
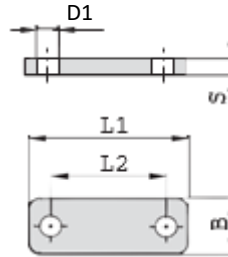
Series	Order Code	Pipe/ Hose/ Tube O.D.	Nominal Inch Bore	Pipe/ Tube/ Hose Inch O.D.	Clamp Body					Cover Plate			Weld Plate					Bolt		
		D1	D1	D1	L1	L2	H	S	B	L1	L2	S	L1	L2	B	S	H		D	
1	PC-S**-1-1-006-*	6																		
	PC-S**-1-1-006.4-*	6.4		1/4																
	PC-S**-1-1-008-*	8		5/16	28	9.5	27	0.4	30	28	9.5	3	31.5	10	30	3	6.5	12	M6 x 30	
	PC-S**-1-1-009.5-*	9.5		3/8																
	PC-S**-1-1-010-*	10	1/8																	
	PC-S**-1-1-012-*	12																		
1A	PC-S**-1-1A-006-*	6																		
	PC-S**-1-1A-006.4-*	6.4		1/4																
	PC-S**-1-1A-008-*	8		5/16	37	20	27	0.4	30	34	20	3	36	20	30	3	6.5	12	M6 x 30	
	PC-S**-1-1A-009.5-*	9.5		3/8																
	PC-S**-1-1A-010-*	10	1/8																	
	PC-S**-1-1A-012-*	12																		
2	PC-S**-1-2-012.7-*	12.7		1/2																
	PC-S**-1-2-013.5-*	13.5	1/4																	
	PC-S**-1-2-014-*	14			42	26	33	0.6	30	40.5	26	3	42	26	30	3	6.5	12	M6 x 35	
	PC-S**-1-2-015-*	15																		
	PC-S**-1-2-016-*	16	5/8																	
	PC-S**-1-2-017.2-*	17.2	3/8																	
3	PC-S**-1-3-018-*	18																		
	PC-S**-1-3-019-*	19		3/4																
	PC-S**-1-3-020-*	20																		
	PC-S**-1-3-021.3-*	21.3	1/2		50	33	36	0.6	30	48	33	3	50	33	30	3	6.5	12	M6 x 40	
	PC-S**-1-3-022-*	22		7/8																
	PC-S**-1-3-025-*	25																		
4	PC-S**-1-3-025.4-*	25.4		1																
	PC-S**-1-4-026.9-*	26.9	3/4																	
	PC-S**-1-4-028-*	28			59	40	42	0.6	30	57	40	3	60	40	30	3	6.5	12	M6 x 45	
	PC-S**-1-4-030-*	30																		
	PC-S**-1-5-032-*	32		1 1/4																
	PC-S**-1-5-033.7-*	33.7	1																	
5	PC-S**-1-5-035-*	35																		
	PC-S**-1-5-038-*	38		1 1/2	71	52	58	0.8	30	70	52	3	71	52	30	3	6.5	12	M6 x 60	
	PC-S**-1-5-040-*	40																		
	PC-S**-1-5-042-*	42	1 1/4																	
	PC-S**-1-6-044.5-*	44.5		1 3/4																
	PC-S**-1-6-048.3-*	48.3	1 1/2		86	66	66	0.8	30	86	66	3	88	66	30	3	6.5	12	M6 x 70	
7	PC-S**-1-6-050.8-*	50.8		2																
	PC-S**-1-7-057.2-*	57.2		2 1/4																
	PC-S**-1-7-060.3-*	60.3	2																	
	PC-S**-1-7-063.5-*	63.5		2 1/2	121	94	93	0.8	30	118	94	5	122	94	30	5	6.5	12	M6 x 100	
	PC-S**-1-7-070-*	70		2 3/4																
	PC-S**-1-7-073-*	73																		
8	PC-S**-1-7-076.1-*	76.1	2 1/2	3																
	PC-S**-1-8-088.9-*	88.9	3	3 1/2	147	120	116	0.8	30	144	120	5	148	120	30	5	6.5	12	M6 x 125	
	PC-S**-1-8-102-*	102		4																

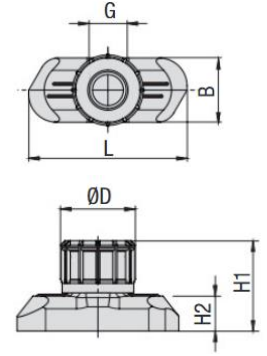
G2 STANDARD SERIES WELD PLATE ONLY SET (CLAMP BODY + WELD PLATE + ALLAN CAP SCREW)

Clamp Body

Weld Plate

Cap Screw

Series	Order Code	Pipe/ Hose/ Tube O.D.	Nominal Inch Bore	Pipe/ Tube/ Hose Inch O.D.	Clamp Body					Weld Plate						Cap Screw
					L1	L2	H	S	B	L1	L2	B	S	H	D	
		D1	D1	D1												
1	PC-S**-2-1-006-*	6			28	9.5	27	0.4	30	31.5	10	30	3	6.5	12	M6 x 30
	PC-S**-2-1-006.4-*	6.4		1/4												
	PC-S**-2-1-008-*	8		5/16												
	PC-S**-2-1-009.5-*	9.5		3/8												
	PC-S**-2-1-010-*	10	1/8													
	PC-S**-2-1-012-*	12														
1A	PC-S**-2-1A-006-*	6			37	20	27	0.4	30	36	20	30	3	6.5	12	M6 x 30
	PC-S**-2-1A-006.4-*	6.4		1/4												
	PC-S**-2-1A-008-*	8		5/16												
	PC-S**-2-1A-009.5-*	9.5		3/8												
	PC-S**-2-1A-010-*	10	1/8													
	PC-S**-2-1A-012-*	12														
2	PC-S**-2-2-012.7-*	12.7		1/2	42	26	33	0.6	30	42	26	30	3	6.5	12	M6 x 35
	PC-S**-2-2-013.5-*	13.5	1/4													
	PC-S**-2-2-014-*	14														
	PC-S**-2-2-015-*	15														
	PC-S**-2-2-016-*	16	5/8													
	PC-S**-2-2-017.2-*	17.2	3/8													
	PC-S**-2-2-018-*	18														
3	PC-S**-2-3-019-*	19		3/4	50	33	36	0.6	30	50	33	30	3	6.5	12	M6 x 40
	PC-S**-2-3-020-*	20														
	PC-S**-2-3-021.3-*	21.3	1/2													
	PC-S**-2-3-022-*	22	7/8													
	PC-S**-2-3-025-*	25														
	PC-S**-2-3-025.4-*	25.4	1													
4	PC-S**-2-4-026.9-*	26.9	3/4		59	40	42	0.6	30	60	40	30	3	6.5	12	M6 x 45
	PC-S**-2-4-028-*	28														
	PC-S**-2-4-030-*	30														
5	PC-S**-2-5-032-*	32		1 1/4	71	52	58	0.8	30	71	52	30	3	6.5	12	M6 x 60
	PC-S**-2-5-033.7-*	33.7	1													
	PC-S**-2-5-035-*	35														
	PC-S**-2-5-038-*	38	1 1/2													
	PC-S**-2-5-040-*	40														
	PC-S**-2-5-042-*	42	1 1/4													
6	PC-S**-2-6-044.5-*	44.5		1 3/4	86	66	66	0.8	30	88	66	30	3	6.5	12	M6 x 70
	PC-S**-2-6-048.3-*	48.3	1 1/2													
	PC-S**-2-6-050.8-*	50.8	2													
7	PC-S**-2-7-057.2-*	57.2		2 1/4	121	94	93	0.8	30	122	94	30	5	6.5	12	M6 x 100
	PC-S**-2-7-060.3-*	60.3	2													
	PC-S**-2-7-063.5-*	63.5	2 1/2													
	PC-S**-2-7-070-*	70	2 3/4													
	PC-S**-2-7-073-*	73														
	PC-S**-2-7-076.1-*	76.1	2 1/2	3												
8	PC-S**-2-8-088.9-*	88.9	3	3 1/2	147	120	116	0.8	30	148	120	30	5	6.5	12	M6 x 125
	PC-S**-2-8-102-*	102		4												

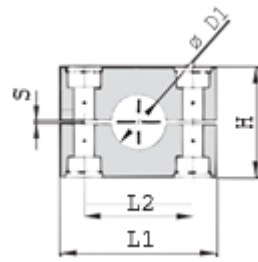
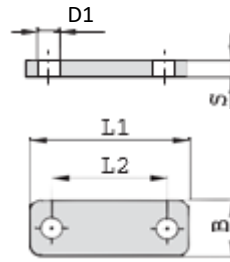
**G3 STANDARD SERIES ELONGATED WELD PLATE ONLY SET
(CLAMP BODY + ELONGATED WELD PLATE + ALLAN CAP SCREW)**

Clamp Body

Elongated Weld Plate

Cap Screw

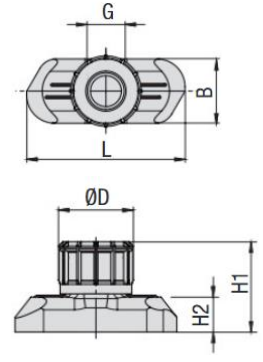
Series	Order Code	Pipe/ Hose / Tube O.D.	Nomi nal Inch Bore	Pipe/ Tube / Hose Inch O.D.	Clamp Body					Elongated Weld Plate						Cap Screw	
		D1	D1	D1	L1	L2	H	S	B	L1	L2	L3	B	S	H		D
1	PC-S**-3-1-006-*	6			28	9.5	26	0.4	30	58	24.5	44	30	3	6.5	12	M6 x 20
	PC-S**-3-1-006.4-*	6.4		1/4													
	PC-S**-3-1-008-*	8		5/16													
	PC-S**-3-1-009.5-*	9.5		3/8													
	PC-S**-3-1-010-*	10	1/8														
PC-S**-3-1-012-*	12																
1A	PC-S**-3-1A-006-*	6			37	20	26	0.4	30	64	20	50	30	3	6.5	12	M6 x 20
	PC-S**-3-1A-006.4-*	6.4		1/4													
	PC-S**-3-1A-008-*	8		5/16													
	PC-S**-3-1A-009.5-*	9.5		3/8													
	PC-S**-3-1A-010-*	10	1/8														
PC-S**-3-1A-012-*	12																
2	PC-S**-3-2-012.7-*	12.7		1/2	42	26	32	0.6	30	70	26	56	30	3	6.5	12	M6 x 25
	PC-S**-3-2-013.5-*	13.5	1/4														
	PC-S**-3-2-014-*	14															
	PC-S**-3-2-015-*	15															
	PC-S**-3-2-016-*	16		5/8													
	PC-S**-3-2-017.2-*	17.2	3/8														
PC-S**-3-2-018-*	18																
3	PC-S**-3-3-019-*	19		3/4	50	33	35.5	0.6	30	78	33	64	30	3	6.5	12	M6 x 30
	PC-S**-3-3-020-*	20															
	PC-S**-3-3-021.3-*	21.3	1/2														
	PC-S**-3-3-022-*	22		7/8													
	PC-S**-3-3-025-*	25															
PC-S**-3-3-025.4-*	25.4		1														
4	PC-S**-3-4-026.9-*	26.9	3/4		59	40	41.5	0.6	30	87	40	73	30	3	6.5	12	M6 x 35
	PC-S**-3-4-028-*	28															
	PC-S**-3-4-030-*	30															
5	PC-S**-3-5-032-*	32		1 1/4	71	52	56.5	0.8	30	100	52	86	30	3	6.5	12	M6 x 50
	PC-S**-3-5-033.7-*	33.7	1														
	PC-S**-3-5-035-*	35															
	PC-S**-3-5-038-*	38		1 1/2													
	PC-S**-3-5-040-*	40															
PC-S**-3-5-042-*	42	1 1/4															
6	PC-S**-3-6-044.5-*	44.5		1 3/4	86	66	64.5	0.8	30	115	66	100	30	3	6.5	12	M6 x 60
	PC-S**-3-6-048.3-*	48.3	1 1/2														
	PC-S**-3-6-050.8-*	50.8		2													
7	PC-S**-3-7-057.2-*	57.2		2 1/4	121	94	92	0.8	30	150	94	136	30	5	6.5	12	M6 x 90
	PC-S**-3-7-060.3-*	60.3	2														
	PC-S**-3-7-063.5-*	63.5		2 1/2													
	PC-S**-3-7-070-*	70		2 3/4													
	PC-S**-3-7-073-*	73															
PC-S**-3-7-076.1-*	76.1	2 1/2	3														
8	PC-S**-3-8-088.9-*	88.9	3	3 1/2	147	120	116	0.8	30	178	120	162	30	5	6.5	12	M6 x 110
	PC-S**-3-8-102-*	102		4													

**G4 STANDARD SERIES COVER PLATE WITH RAIL NUT SET
(CLAMP BODY + COVER PLATE + RAIL NUTS + HEX BOLTS)**

Clamp Body

Cover Plate

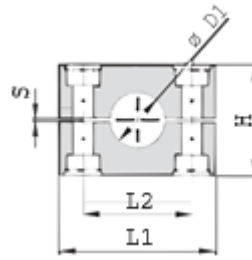
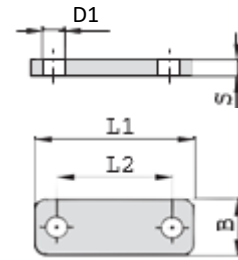
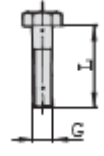
Hex Bolt

Hex Rail Nut

Series	Order Code	Pipe/ Hose/ Tube O.D.	Nominal Inch Bore	Pipe/ Tube/ Hose Inch O.D.	Clamp Body					Cover Plate			Bolt	Hex Rail Nut					
		D1	D1	D1	L1	L2	H	S	B	L1	L2	S		G	L	B	H1	H2	D
1	PC-S**-5-1-006.*	6			28	9.5	26	0.4	30	28	9.5	3	M6 x 30	M6	25.5	10.4	14.2	5.5	12
	PC-S**-5-1-006.4.*	6.4		1/4															
	PC-S**-5-1-008.*	8		5/16															
	PC-S**-5-1-009.5.*	9.5		3/8															
	PC-S**-5-1-010.*	10	1/8																
	PC-S**-5-1-012.*	12																	
1A	PC-S**-5-1A-006.*	6			37	20	26	0.4	30	34	20	3	M6 x 30	M6	25.5	10.4	14.2	5.5	12
	PC-S**-5-1A-006.4.*	6.4		1/4															
	PC-S**-5-1A-008.*	8		5/16															
	PC-S**-5-1A-009.5.*	9.5		3/8															
	PC-S**-5-1A-010.*	10	1/8																
	PC-S**-5-1A-012.*	12																	
2	PC-S**-5-2-012.7.*	12.7		1/2	42	26	32	0.6	30	40.5	26	3	M6 x 35	M6	25.5	10.4	14.2	5.5	12
	PC-S**-5-2-013.5.*	13.5	1/4																
	PC-S**-5-2-014.*	14																	
	PC-S**-5-2-015.*	15																	
	PC-S**-5-2-016.*	16		5/8															
	PC-S**-5-2-017.2.*	17.2	3/8																
3	PC-S**-5-3-019.*	19		3/4	50	33	35.5	0.6	30	48	33	3	M6 x 40	M6	25.5	10.4	14.2	5.5	12
	PC-S**-5-3-020.*	20																	
	PC-S**-5-3-021.3.*	21.3	1/2																
	PC-S**-5-3-022.*	22		7/8															
	PC-S**-5-3-025.*	25																	
	PC-S**-5-3-025.4.*	25.4		1															
4	PC-S**-5-4-026.9.*	26.9	3/4		59	40	41.5	0.6	30	57	40	3	M6 x 45	M6	25.5	10.4	14.2	5.5	12
	PC-S**-5-4-028.*	28																	
	PC-S**-5-4-030.*	30																	
5	PC-S**-5-5-032.*	32		1 1/4	71	52	56.5	0.8	30	70	52	3	M6 x 60	M6	25.5	10.4	14.2	5.5	12
	PC-S**-5-5-033.7.*	33.7	1																
	PC-S**-5-5-035.*	35																	
	PC-S**-5-5-038.*	38		1 1/2															
	PC-S**-5-5-040.*	40																	
	PC-S**-5-5-042.*	42	1 1/4																
6	PC-S**-5-6-044.5.*	44.5		1 3/4	86	66	64.5	0.8	30	86	66	3	M6 x 70	M6	25.5	10.4	14.2	5.5	12
	PC-S**-5-6-048.3.*	48.3	1 1/2																
	PC-S**-5-6-050.8.*	50.8		2															
7	PC-S**-5-7-057.2.*	57.2		2 1/4	121	94	92	0.8	30	118	94	5	M6 x 100	M6	25.5	10.4	14.2	5.5	12
	PC-S**-5-7-060.3.*	60.3	2																
	PC-S**-5-7-063.5.*	63.5		2 1/2															
	PC-S**-5-7-070.*	70		2 3/4															
	PC-S**-5-7-073.*	73																	
	PC-S**-5-7-076.1.*	76.1	2 1/2	3															
8	PC-S**-5-8-088.9.*	88.9	3	3 1/2	147	120	116	0.8	30	144	120	5	M6 x 125	M6	25.5	10.4	14.2	5.5	12
	PC-S**-5-8-102.*	102		4															

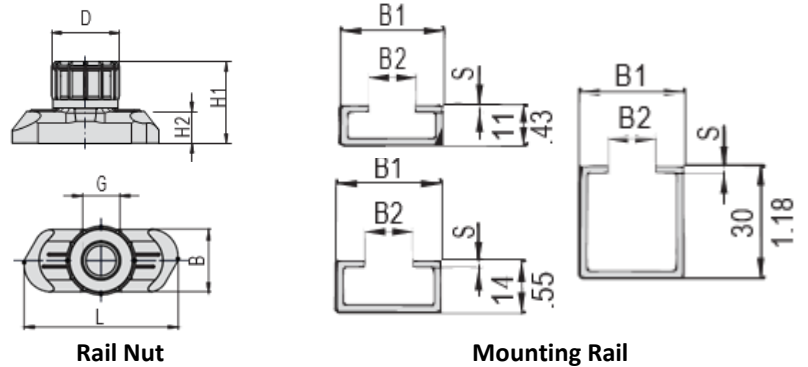
**G5 STANDARD SERIES COVER PLATE WITH RAIL NUT SET
(CLAMP BODY + COVER PLATE + RAIL NUTS + ALLAN CAP SCREW)**

Clamp Body

Cover Plate

Cap Screw

Hex Rail Nut

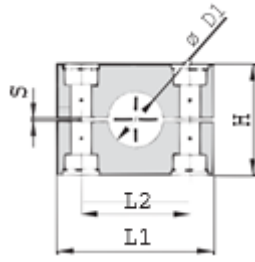
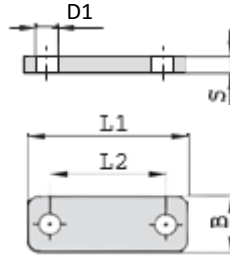
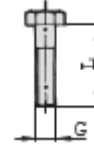
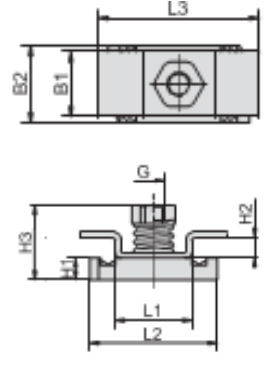
Series	Order Code	Pipe/ Hose/ Tube O.D.	Nominal Inch Bore	Pipe/ Tube/ Hose Inch O.D.	Clamp Body					Cover Plate			Cap Screw	Hex Rail Nut					
		D1	D1	D1	L1	L2	H	S	B	L1	L2	S		G	L	B	H1	H2	D
1	PC-S**-6-1-006-*	6			28	9.5	26	0.4	30	28	9.5	3	M6 x 30						
	PC-S**-6-1-006.4-*	6.4		1/4															
	PC-S**-6-1-008-*	8		5/16															
	PC-S**-6-1-009.5-*	9.5		3/8															
	PC-S**-6-1-010-*	10	1/8																
PC-S**-6-1-012-*	12																		
1A	PC-S**-6-1A-006-*	6			37	20	26	0.4	30	34	20	3	M6 x 30						
	PC-S**-6-1A-006.4-*	6.4		1/4															
	PC-S**-6-1A-008-*	8		5/16															
	PC-S**-6-1A-009.5-*	9.5		3/8															
	PC-S**-6-1A-010-*	10	1/8																
PC-S**-6-1A-012-*	12																		
2	PC-S**-6-2-012.7-*	12.7		1/2	42	26	32	0.6	30	40.5	26	3	M6 x 35						
	PC-S**-6-2-013.5-*	13.5	1/4																
	PC-S**-6-2-014-*	14																	
	PC-S**-6-2-015-*	15																	
	PC-S**-6-2-016-*	16		5/8															
	PC-S**-6-2-017.2-*	17.2	3/8																
PC-S**-6-2-018-*	18																		
3	PC-S**-6-3-019-*	19		3/4	50	33	35.5	0.6	30	48	33	3	M6 x 40	M6	25.5	10.4	14.2	5.5	12
	PC-S**-6-3-020-*	20																	
	PC-S**-6-3-021.3-*	21.3	1/2																
	PC-S**-6-3-022-*	22		7/8															
	PC-S**-6-3-025-*	25																	
PC-S**-6-3-025.4-*	25.4		1																
4	PC-S**-6-4-026.9-*	26.9	3/4		59	40	41.5	0.6	30	57	40	3	M6 x 45						
	PC-S**-6-4-028-*	28																	
	PC-S**-6-4-030-*	30																	
5	PC-S**-6-5-032-*	32		1 1/4	71	52	56.5	0.8	30	70	52	3	M6 x 60						
	PC-S**-6-5-033.7-*	33.7	1																
	PC-S**-6-5-035-*	35																	
	PC-S**-6-5-038-*	38		1 1/2															
	PC-S**-6-5-040-*	40																	
PC-S**-6-5-042-*	42	1 1/4																	
6	PC-S**-6-6-044.5-*	44.5		1 3/4	86	66	64.5	0.8	30	86	66	3	M6 x 70						
	PC-S**-6-6-048.3-*	48.3	1 1/2																
	PC-S**-6-6-050.8-*	50.8		2															
7	PC-S**-6-7-057.2-*	57.2		2 1/4	121	94	92	0.8	30	118	94	5	M6 x 100						
	PC-S**-6-7-060.3-*	60.3	2																
	PC-S**-6-7-063.5-*	63.5		2 1/2															
	PC-S**-6-7-070-*	70		2 3/4															
	PC-S**-6-7-073-*	73																	
PC-S**-6-7-076.1-*	76.1	2 1/2	3																
8	PC-S**-6-8-088.9-*	88.9	3	3 1/2	147	120	116	0.8	30	144	120	5	M6 x 125						
	PC-S**-6-8-102-*	102		4															

G6 STANDARD SERIES MOUNTING RAIL AND HEX RAIL NUT SET
(CLAMP BODY + COVER PLATE + MOUNTING RAIL + RAIL NUTS + HEX BOLT)

Clamp Body

Cover Plate

Hex Bolt

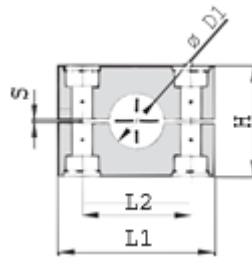
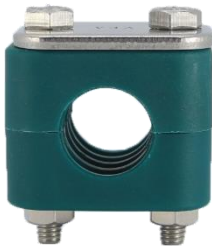
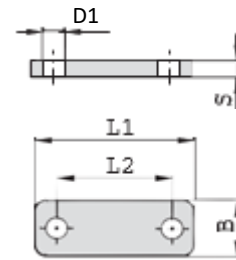
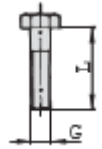
Series	Order Code	Pipe/ Hose/ Tube O.D.	Nominal Inch Bore	Pipe/ Tube/ Hose Inch O.D.	Clamp Body					Cover Plate			Bolt
		D1	D1	D1	L1	L2	H	S	B	L1	L2	S	
1	PC-S**-7-1-006-*	6			28	9.5	26	0.4	30	28	9.5	3	M6 x 30
	PC-S**-7-1-006.4-*	6.4		1/4									
	PC-S**-7-1-008-*	8		5/16									
	PC-S**-7-1-009.5-*	9.5		3/8									
	PC-S**-7-1-010-*	10	1/8										
PC-S**-7-1-012-*	12												
1A	PC-S**-7-1A-006-*	6			37	20	26	0.4	30	34	20	3	M6 x 30
	PC-S**-7-1A-006.4-*	6.4		1/4									
	PC-S**-7-1A-008-*	8		5/16									
	PC-S**-7-1A-009.5-*	9.5		3/8									
	PC-S**-7-1A-010-*	10	1/8										
PC-S**-7-1A-012-*	12												
2	PC-S**-7-2-012.7-*	12.7		1/2	42	26	32	0.6	30	40.5	26	3	M6 x 35
	PC-S**-7-2-013.5-*	13.5	1/4										
	PC-S**-7-2-014-*	14											
	PC-S**-7-2-015-*	15											
	PC-S**-7-2-016-*	16		5/8									
	PC-S**-7-2-017.2-*	17.2	3/8										
PC-S**-7-2-018-*	18												
3	PC-S**-7-3-019-*	19		3/4	50	33	35.5	0.6	30	48	33	3	M6 x 40
	PC-S**-7-3-020-*	20											
	PC-S**-7-3-021.3-*	21.3	1/2										
	PC-S**-7-3-022-*	22		7/8									
	PC-S**-7-3-025-*	25											
PC-S**-7-3-025.4-*	25.4		1										
4	PC-S**-7-4-026.9-*	26.9	3/4		59	40	41.5	0.6	30	57	40	3	M6 x 45
	PC-S**-7-4-028-*	28											
	PC-S**-7-4-030-*	30											
5	PC-S**-7-5-032-*	32		1 1/4	71	52	56.5	0.8	30	70	52	3	M6 x 60
	PC-S**-7-5-033.7-*	33.7	1										
	PC-S**-7-5-035-*	35											
	PC-S**-7-5-038-*	38		1 1/2									
	PC-S**-7-5-040-*	40											
PC-S**-7-5-042-*	42	1 1/4											
6	PC-S**-7-6-044.5-*	44.5		1 3/4	86	66	64.5	0.8	30	86	66	3	M6 x 70
	PC-S**-7-6-048.3-*	48.3	1 1/2										
	PC-S**-7-6-050.8-*	50.8		2									
7	PC-S**-7-7-057.2-*	57.2		2 1/4	121	94	92	0.8	30	118	94	5	M6 x 100
	PC-S**-7-7-060.3-*	60.3	2										
	PC-S**-7-7-063.5-*	63.5		2 1/2									
	PC-S**-7-7-070-*	70		2 3/4									
	PC-S**-7-7-073-*	73											
PC-S**-7-7-076.1-*	76.1	2 1/2	3										
8	PC-S**-7-8-088.9-*	88.9	3	3 1/2	147	120	116	0.8	30	144	120	5	M6 x 125
	PC-S**-7-8-102-*	102		4									

G6 STANDARD SERIES MOUNTING RAIL AND HEX RAIL NUT SET
(CLAMP BODY + COVER PLATE + MOUNTING RAIL + RAIL NUTS + HEX BOLT)


Series	Order Code	Pipe/ Hose/ Tube O.D.	Nominal Inch Bore	Pipe/ Tube/ Hose Inch O.D.	Rail Nut						Mounting Rail							
					G	L	B	H1	H2	D	B1	B2	S					
					D1	D1	D1											
1	PC-S**-7-1-006-*	6																
	PC-S**-7-1-006.4-*	6.4		1/4														
	PC-S**-7-1-008-*	8		5/16														
	PC-S**-7-1-009.5-*	9.5		3/8														
	PC-S**-7-1-010-*	10	1/8															
	PC-S**-7-1-012-*	12																
1A	PC-S**-7-1A-006-*	6																
	PC-S**-7-1A-006.4-*	6.4		1/4														
	PC-S**-7-1A-008-*	8		5/16														
	PC-S**-7-1A-009.5-*	9.5		3/8														
	PC-S**-7-1A-010-*	10	1/8															
	PC-S**-7-1A-012-*	12																
2	PC-S**-7-2-012.7-*	12.7		1/2														
	PC-S**-7-2-013.5-*	13.5	1/4															
	PC-S**-7-2-014-*	14																
	PC-S**-7-2-015-*	15																
	PC-S**-7-2-016-*	16		5/8														
	PC-S**-7-2-017.2-*	17.2	3/8															
3	PC-S**-7-3-018-*	18																
	PC-S**-7-3-019-*	19		3/4														
	PC-S**-7-3-020-*	20																
	PC-S**-7-3-021.3-*	21.3	1/2															
	PC-S**-7-3-022-*	22		7/8	M6	25.5	10.4	14.2	5.5	12	28	11	2					
	PC-S**-7-3-025-*	25																
4	PC-S**-7-3-025.4-*	25.4		1														
	PC-S**-7-4-026.9-*	26.9	3/4															
	PC-S**-7-4-028-*	28																
5	PC-S**-7-4-030-*	30																
	PC-S**-7-5-032-*	32		1 1/4														
	PC-S**-7-5-033.7-*	33.7	1															
	PC-S**-7-5-035-*	35																
	PC-S**-7-5-038-*	38		1 1/2														
6	PC-S**-7-5-040-*	40																
	PC-S**-7-5-042-*	42	1 1/4															
	PC-S**-7-6-044.5-*	44.5		1 3/4														
7	PC-S**-7-6-048.3-*	48.3	1 1/2															
	PC-S**-7-6-050.8-*	50.8		2														
8	PC-S**-7-7-057.2-*	57.2		2 1/4														
	PC-S**-7-7-060.3-*	60.3	2															
	PC-S**-7-7-063.5-*	63.5		2 1/2														
	PC-S**-7-7-070-*	70		2 3/4														
	PC-S**-7-7-073-*	73																
9	PC-S**-7-7-076.1-*	76.1	2 1/2	3														
	PC-S**-7-8-088.9-*	88.9	3	3 1/2														
	PC-S**-7-8-102-*	102		4														

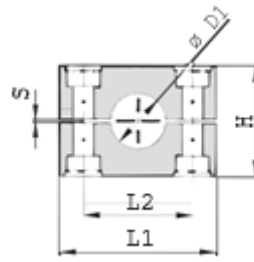
**G7 STANDARD SERIES CHANNEL RAIL ADAPTOR SET
(CLAMP BODY + COVER PLATE + CHANNEL RAIL ADAPTOR + HEX BOLT)**

Clamp Body

Cover Plate

Hex Bolt

Channel Rail Adaptor

Series	Order Code	Pipe/ Hose/ Tube O.D.	Nominal Inch Bore	Pipe/ Tube/ Hose Inch O.D.	Clamp Body					Cover Plate			Bolt	Channel Rail Adaptor							
		D1	D1	D1	L1	L2	H	S	B	L1	L2	S		L1	L2	L3	B1	B2	H1	H2	H3
1	PC-S-**-8-1-006-*	6			28	9.5	27	0.4	30	28	9.5	3	M6 x 30								
	PC-S-**-8-1-006.4-*	6.4		1/4																	
	PC-S-**-8-1-008-*	8		5/16																	
	PC-S-**-8-1-009.5-*	9.5		3/8																	
	PC-S-**-8-1-010-*	10	1/8																		
PC-S-**-8-1-012-*	12																				
1A	PC-S-**-8-1A-006-*	6			37	20	27	0.4	30	34	20	3	M6 x 30								
	PC-S-**-8-1A-006.4-*	6.4		1/4																	
	PC-S-**-8-1A-008-*	8		5/16																	
	PC-S-**-8-1A-009.5-*	9.5		3/8																	
	PC-S-**-8-1A-010-*	10	1/8																		
PC-S-**-8-1A-012-*	12																				
2	PC-S-**-8-2-012.7-*	12.7		1/2	42	26	33	0.6	30	40.5	26	3	M6 x 35								
	PC-S-**-8-2-013.5-*	13.5	1/4																		
	PC-S-**-8-2-014-*	14																			
	PC-S-**-8-2-015-*	15																			
	PC-S-**-8-2-016-*	16	5/8																		
	PC-S-**-8-2-017.2-*	17.2	3/8																		
PC-S-**-8-2-018-*	18																				
3	PC-S-**-8-3-019-*	19		3/4	50	33	36	0.6	30	48	33	3	M6 x 40	21	35	40	16	19	6	5.5	20.5
	PC-S-**-8-3-020-*	20																			
	PC-S-**-8-3-021.3-*	21.3	1/2																		
	PC-S-**-8-3-022-*	22	7/8																		
	PC-S-**-8-3-025-*	25																			
PC-S-**-8-3-025.4-*	25.4	1																			
4	PC-S-**-8-4-026.9-*	26.9	3/4		59	40	42	0.6	30	57	40	3	M6 x 45								
	PC-S-**-8-4-028-*	28																			
	PC-S-**-8-4-030-*	30																			
5	PC-S-**-8-5-032-*	32		1 1/4	71	52	58	0.8	30	70	52	3	M6 x 60								
	PC-S-**-8-5-033.7-*	33.7	1																		
	PC-S-**-8-5-035-*	35																			
	PC-S-**-8-5-038-*	38	1 1/2																		
	PC-S-**-8-5-040-*	40																			
PC-S-**-8-5-042-*	42	1 1/4																			
6	PC-S-**-8-6-044.5-*	44.5		1 3/4	86	66	66	0.8	30	86	66	3	M6 x 70								
	PC-S-**-8-6-048.3-*	48.3	1 1/2																		
	PC-S-**-8-6-050.8-*	50.8	2																		
7	PC-S-**-8-7-057.2-*	57.2		2 1/4	121	94	93	0.8	30	118	94	5	M6 x 100								
	PC-S-**-8-7-060.3-*	60.3	2																		
	PC-S-**-8-7-063.5-*	63.5	2 1/2																		
	PC-S-**-8-7-070-*	70	2 3/4																		
	PC-S-**-8-7-073-*	73																			
PC-S-**-8-7-076.1-*	76.1	2 1/2	3																		
8	PC-S-**-8-8-088.9-*	88.9	3	3 1/2	147	120	116	0.8	30	144	120	5	M6 x 125								
	PC-S-**-8-8-102-*	102		4																	

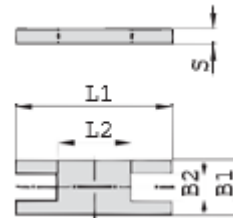
**G8 STANDARD SERIES LONG HEX BOLT AND NUT SET
(CLAMP BODY + COVER PLATE + LONG HEX BOLT AND NUT)**

Clamp Body

Cover Plate

Hex Bolt

Series	Order Code	Pipe/ Hose / Tube O.D.	Nomin al Inch Bore	Pipe/ Tube/ Hose Inch O.D.	Clamp Body					Cover Plate			Long Hex Bolt
					L1	L2	H	S	B	L1	L2	S	
					D1	D1							
1	PC-S**-9-1-006-*	6			28	9.5	27	0.4	30	28	9.5	3	M6 x 55
	PC-S**-9-1-006.4-*	6.4		1/4									
	PC-S**-9-1-008-*	8		5/16									
	PC-S**-9-1-009.5-*	9.5		3/8									
	PC-S**-9-1-010-*	10	1/8										
	PC-S**-9-1-012-*	12											
1A	PC-S**-9-1A-006-*	6			37	20	27	0.4	30	34	20	3	M6 x 55
	PC-S**-9-1A-006.4-*	6.4		1/4									
	PC-S**-9-1A-008-*	8		5/16									
	PC-S**-9-1A-009.5-*	9.5		3/8									
	PC-S**-9-1A-010-*	10	1/8										
	PC-S**-9-1A-012-*	12											
2	PC-S**-9-2-012.7-*	12.7		1/2	42	26	33	0.6	30	40.5	26	3	M6 x 55
	PC-S**-9-2-013.5-*	13.5	1/4										
	PC-S**-9-2-014-*	14											
	PC-S**-9-2-015-*	15											
	PC-S**-9-2-016-*	16		5/8									
	PC-S**-9-2-017.2-*	17.2	3/8										
3	PC-S**-9-3-019-*	19		3/4	50	33	36	0.6	30	48	33	3	M6 x 60
	PC-S**-9-3-020-*	20											
	PC-S**-9-3-021.3-*	21.3	1/2										
	PC-S**-9-3-022-*	22		7/8									
	PC-S**-9-3-025-*	25											
	PC-S**-9-3-025.4-*	25.4		1									
4	PC-S**-9-4-026.9-*	26.9	3/4		59	40	42	0.6	30	57	40	3	M6 x 70
	PC-S**-9-4-028-*	28											
	PC-S**-9-4-030-*	30											
5	PC-S**-9-5-032-*	32		1 1/4	71	52	58	0.8	30	70	52	3	M6x 80
	PC-S**-9-5-033.7-*	33.7	1										
	PC-S**-9-5-035-*	35											
	PC-S**-9-5-038-*	38		1 1/2									
	PC-S**-9-5-040-*	40											
	PC-S**-9-5-042-*	42	1 1/4										
6	PC-S**-9-6-044.5-*	44.5		1 3/4	86	66	66	0.8	30	86	66	3	M6 x 100
	PC-S**-9-6-048.3-*	48.3	1 1/2										
	PC-S**-9-6-050.8-*	50.8		2									
7	PC-S**-9-7-057.2-*	57.2		2 1/4	121	94	93	0.8	30	118	94	5	M6 x 125
	PC-S**-9-7-060.3-*	60.3	2										
	PC-S**-9-7-063.5-*	63.5		2 1/2									
	PC-S**-9-7-070-*	70		2 3/4									
	PC-S**-9-7-073-*	73											
	PC-S**-9-7-076.1-*	76.1	2 1/2	3									
8	PC-S**-9-8-088.9-*	88.9	3	3 1/2	147	120	116	0.8	30	144	120	5	M6 x 140
	PC-S**-9-8-102-*	102		4									

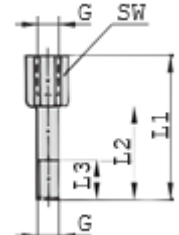
**G9 STANDARD SERIES WITH LOCKING PLATE AND STAKING BOLT SET
(CLAMP BODY + STACKING BOLTS + LOCKING PLATE)**



Clamp Body



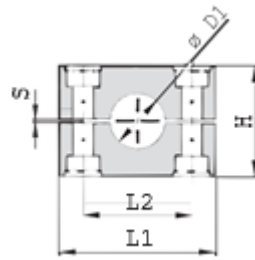
Safety Locking Plate



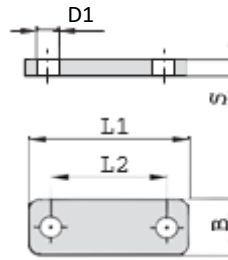
Stacking Bolt

Series	Order Code	Pipe/ Hose/ Tube O.D.	Nominal Inch Bore	Pipe/ Tube/ Hose Inch O.D.	Clamp Body					Safety Locking Plate	Stacking Bolt		
		D1	D1	D1	L1	L2	H	S	B	L	L1	L2	L3
1A	PC-S**-10-1A-006-*	6			37	20	26	0.4	30	33	34	20	12
	PC-S**-10-1A-006.4-*	6.4		1/4									
	PC-S**-10-1A-008-*	8		5/16									
	PC-S**-10-1A-009.5-*	9.5		3/8									
	PC-S**-10-1A-010-*	10	1/8										
PC-S**-10-1A-012-*	12												
2	PC-S**-10-2-012.7-*	12.7		1/2	42	26	32	0.6	30	39	40	25	12
	PC-S**-10-2-013.5-*	13.5	1/4										
	PC-S**-10-2-014-*	14											
	PC-S**-10-2-015-*	15											
	PC-S**-10-2-016-*	16		5/8									
	PC-S**-10-2-017.2-*	17.2	3/8										
PC-S**-10-2-018-*	18												
3	PC-S**-10-3-019-*	19		3/4	50	33	35.5	0.6	30	47	44	30	12
	PC-S**-10-3-020-*	20											
	PC-S**-10-3-021.3-*	21.3	1/2										
	PC-S**-10-3-022-*	22		7/8									
	PC-S**-10-3-025-*	25											
PC-S**-10-3-025.4-*	25.4		1										
4	PC-S**-10-4-026.9-*	26.9	3/4		59	40	41.5	0.6	30	56	49	35	12
	PC-S**-10-4-028-*	28											
	PC-S**-10-4-030-*	30											
5	PC-S**-10-5-032-*	32		1 1/4	71	52	56.5	0.8	30	69	64	50	12
	PC-S**-10-5-033.7-*	33.7	1										
	PC-S**-10-5-035-*	35											
	PC-S**-10-5-038-*	38		1 1/2									
	PC-S**-10-5-040-*	40											
PC-S**-10-5-042-*	42	1 1/4											
6	PC-S**-10-6-044.5-*	44.5		1 3/4	86	66	64.5	0.8	30	85	74	60	12
	PC-S**-10-6-048.3-*	48.3	1 1/2										
	PC-S**-10-6-050.8-*	50.8		2									
7	PC-S**-10-7-057.2-*	57.2		2 1/4	121	94	92	0.8	30	117	99	85	12
	PC-S**-10-7-060.3-*	60.3	2										
	PC-S**-10-7-063.5-*	63.5		2 1/2									
	PC-S**-10-7-070-*	70		2 3/4									
	PC-S**-10-7-073-*	73											
PC-S**-10-7-076.1-*	76.1	2 1/2	3										
8	PC-S**-10-8-088.9-*	88.9	3	3 1/2	147	120	116	0.8	30	143	124	110	12
	PC-S**-10-8-102-*	102		4									

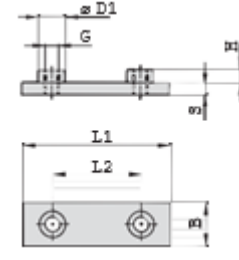
G10 STANDARD SERIES DOUBLE/ TRIPLE STACK SET WITH COVER AND LOCKING PLATE AND STACKING BOLT (CLAMP BODY + COVER PLATE + WELD PLATE + LOCKING PLATE + STACKING BOLT + HEX BOLT)



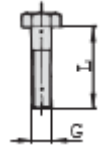
Clamp Body



Cover Plate



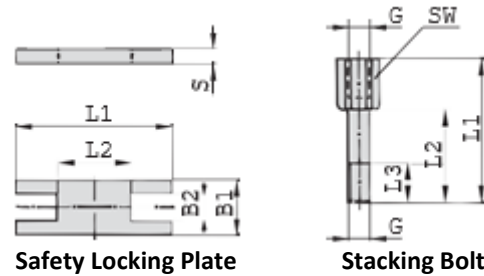
Weld Plate



Hex Bolt

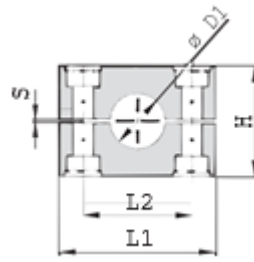
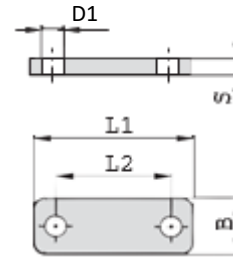
*NOTES: 2 to 10 sets in a vertical row are available.

Series	Order Code	Pipe/ Hose/ Tube O.D.	Nominal Inch Bore	Pipe/ Tube/ Hose Inch O.D.	Clamp Body					Cover Plate			Weld Plate					Bolt	
		D1	D1	D1	L1	L2	H	S	B	L1	L2	S	L1	L2	B	S	H		D
1	PC-S**-11-1-006.*	6			28	9.5	27	0.4	30	28	9.5	3	31.5	10	30	3	6.5	12	M6 x 30
	PC-S**-11-1-006.4.*	6.4		1/4															
	PC-S**-11-1-008.*	8		5/16															
	PC-S**-11-1-009.5.*	9.5		3/8															
	PC-S**-11-1-010.*	10	1/8																
PC-S**-11-1-012.*	12																		
1A	PC-S**-11-1A-006.*	6			37	20	27	0.4	30	34	20	3	36	20	30	3	6.5	12	M6 x 30
	PC-S**-11-1A-006.4.*	6.4		1/4															
	PC-S**-11-1A-008.*	8		5/16															
	PC-S**-11-1A-009.5.*	9.5		3/8															
	PC-S**-11-1A-010.*	10	1/8																
PC-S**-11-1A-012.*	12																		
2	PC-S**-11-2-012.7.*	12.7		1/2	42	26	33	0.6	30	40.5	26	3	42	26	30	3	6.5	12	M6 x 35
	PC-S**-11-2-013.5.*	13.5	1/4																
	PC-S**-11-2-014.*	14																	
	PC-S**-11-2-015.*	15																	
	PC-S**-11-2-016.*	16		5/8															
	PC-S**-11-2-017.2.*	17.2	3/8																
PC-S**-11-2-018.*	18																		
3	PC-S**-11-3-019.*	19		3/4	50	33	36	0.6	30	48	33	3	50	33	30	3	6.5	12	M6 x 40
	PC-S**-11-3-020.*	20																	
	PC-S**-11-3-021.3.*	21.3	1/2																
	PC-S**-11-3-022.*	22		7/8															
	PC-S**-11-3-025.*	25																	
PC-S**-11-3-025.4.*	25.4		1																
4	PC-S**-11-4-026.9.*	26.9	3/4		59	40	42	0.6	30	57	40	3	60	40	30	3	6.5	12	M6 x 45
	PC-S**-11-4-028.*	28																	
	PC-S**-11-4-030.*	30																	
5	PC-S**-11-5-032.*	32		1 1/4	71	52	58	0.8	30	70	52	3	71	52	30	3	6.5	12	M6 x 60
	PC-S**-11-5-033.7.*	33.7	1																
	PC-S**-11-5-035.*	35																	
	PC-S**-11-5-038.*	38		1 1/2															
	PC-S**-11-5-040.*	40																	
PC-S**-11-5-042.*	42	1 1/4																	
6	PC-S**-11-6-044.5.*	44.5		1 3/4	86	66	66	0.8	30	86	66	3	88	66	30	3	6.5	12	M6 x 70
	PC-S**-11-6-048.3.*	48.3	1 1/2																
	PC-S**-11-6-050.8.*	50.8		2															
7	PC-S**-11-7-057.2.*	57.2		2 1/4	121	94	93	0.8	30	118	94	5	122	94	30	5	6.5	12	M6 x 100
	PC-S**-11-7-060.3.*	60.3	2																
	PC-S**-11-7-063.5.*	63.5		2 1/2															
	PC-S**-11-7-070.*	70		2 3/4															
	PC-S**-11-7-073.*	73																	
PC-S**-11-7-076.1.*	76.1	2 1/2	3																
8	PC-S**-11-8-088.9.*	88.9	3	3 1/2	147	120	116	0.8	30	144	120	5	148	120	30	5	6.5	12	M6 x 125
	PC-S**-11-8-102.*	102		4															

G10 STANDARD SERIES DOUBLE/ TRIPLE STACK SET WITH COVER AND LOCKING PLATE AND STACKING BOLT (CLAMP BODY + COVER PLATE + WELD PLATE + LOCKING PLATE + STACKING BOLT + HEX BOLT)


*NOTES: 2 to 10 sets in a vertical row are available.

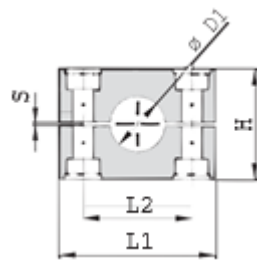
Series	Order Code	Pipe/ Hose/ Tube O.D.	Nominal Inch Bore	Pipe/ Tube/ Hose Inch O.D.	Safety Locking Plate	Stacking Bolt		
		D1	D1	D1	L	L1	L2	L3
1A	PC-S-**-11-1A-006-*	6			33	34	20	12
	PC-S-**-11-1A-006.4-*	6.4		1/4				
	PC-S-**-11-1A-008-*	8		5/16				
	PC-S-**-11-1A-009.5-*	9.5		3/8				
	PC-S-**-11-1A-010-*	10	1/8					
	PC-S-**-11-1A-012-*	12						
2	PC-S-**-11-2-012.7-*	12.7		1/2	39	40	25	12
	PC-S-**-11-2-013.5-*	13.5	1/4					
	PC-S-**-11-2-014-*	14						
	PC-S-**-11-2-015-*	15						
	PC-S-**-11-2-016-*	16		5/8				
	PC-S-**-11-2-017.2-*	17.2	3/8					
3	PC-S-**-11-3-019-*	19		3/4	47	44	30	12
	PC-S-**-11-3-020-*	20						
	PC-S-**-11-3-021.3-*	21.3	1/2					
	PC-S-**-11-3-022-*	22		7/8				
	PC-S-**-11-3-025-*	25						
	PC-S-**-11-3-025.4-*	25.4		1				
4	PC-S-**-11-4-026.9-*	26.9	3/4		56	49	35	12
	PC-S-**-11-4-028-*	28						
	PC-S-**-11-4-030-*	30						
5	PC-S-**-11-5-032-*	32		1 1/4	69	64	50	12
	PC-S-**-11-5-033.7-*	33.7	1					
	PC-S-**-11-5-035-*	35						
	PC-S-**-11-5-038-*	38		1 1/2				
	PC-S-**-11-5-040-*	40						
	PC-S-**-11-5-042-*	42	1 1/4					
6	PC-S-**-11-6-044.5-*	44.5		1 3/4	85	74	60	12
	PC-S-**-11-6-048.3-*	48.3	1 1/2					
	PC-S-**-11-6-050.8-*	50.8		2				
7	PC-S-**-11-7-057.2-*	57.2		2 1/4	117	99	85	12
	PC-S-**-11-7-060.3-*	60.3	2					
	PC-S-**-11-7-063.5-*	63.5		2 1/2				
	PC-S-**-11-7-070-*	70		2 3/4				
	PC-S-**-11-7-073-*	73						
	PC-S-**-11-7-076.1-*	76.1	2 1/2	3				
8	PC-S-**-11-8-088.9-*	88.9	3	3 1/2	143	124	110	12
	PC-S-**-11-8-102-*	102		4				

**G11 STANDARD SERIES DOUBLE/TRIPLE STACK LONG HEX BOLT AND NUT SET
(CLAMP BODY + COVER PLATE + LONG HEX BOLT AND NUT)**

Clamp Body

Cover Plate

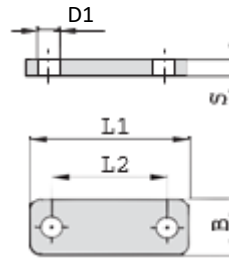
Hex Bolt

Series	Order Code	Pipe/ Hose/ Tube O.D.	Nomin al Inch Bore	Pipe/ Tube/ Hose Inch O.D.	Clamp Body					Cover Plate			Long Hex Bolt
		D1	D1	D1	L1	L2	H	S	B	L1	L2	S	
1	PC-S-**-9-1-006-*	6			28	9.5	27	0.4	30	28	9.5	3	M6 x 55
	PC-S-**-9-1-006.4-*	6.4		1/4									
	PC-S-**-9-1-008-*	8		5/16									
	PC-S-**-9-1-009.5-*	9.5		3/8									
	PC-S-**-9-1-010-*	10	1/8										
PC-S-**-9-1-012-*	12												
1A	PC-S-**-9-1A-006-*	6			37	20	27	0.4	30	34	20	3	M6 x 55
	PC-S-**-9-1A-006.4-*	6.4		1/4									
	PC-S-**-9-1A-008-*	8		5/16									
	PC-S-**-9-1A-009.5-*	9.5		3/8									
	PC-S-**-9-1A-010-*	10	1/8										
PC-S-**-9-1A-012-*	12												
2	PC-S-**-9-2-012.7-*	12.7		1/2	42	26	33	0.6	30	40.5	26	3	M6 x 55
	PC-S-**-9-2-013.5-*	13.5	1/4										
	PC-S-**-9-2-014-*	14											
	PC-S-**-9-2-015-*	15											
	PC-S-**-9-2-016-*	16		5/8									
	PC-S-**-9-2-017.2-*	17.2	3/8										
PC-S-**-9-2-018-*	18												
3	PC-S-**-9-3-019-*	19		3/4	50	33	36	0.6	30	48	33	3	M6 x 60
	PC-S-**-9-3-020-*	20											
	PC-S-**-9-3-021.3-*	21.3	1/2										
	PC-S-**-9-3-022-*	22		7/8									
	PC-S-**-9-3-025-*	25											
PC-S-**-9-3-025.4-*	25.4		1										
4	PC-S-**-9-4-026.9-*	26.9	3/4		59	40	42	0.6	30	57	40	3	M6 x 70
	PC-S-**-9-4-028-*	28											
	PC-S-**-9-4-030-*	30											
5	PC-S-**-9-5-032-*	32		1 1/4	71	52	58	0.8	30	70	52	3	M6x 80
	PC-S-**-9-5-033.7-*	33.7	1										
	PC-S-**-9-5-035-*	35											
	PC-S-**-9-5-038-*	38		1 1/2									
	PC-S-**-9-5-040-*	40											
PC-S-**-9-5-042-*	42	1 1/4											
6	PC-S-**-9-6-044.5-*	44.5		1 3/4	86	66	66	0.8	30	86	66	3	M6 x 100
	PC-S-**-9-6-048.3-*	48.3	1 1/2										
	PC-S-**-9-6-050.8-*	50.8		2									
7	PC-S-**-9-7-057.2-*	57.2		2 1/4	121	94	93	0.8	30	118	94	5	M6 x 125
	PC-S-**-9-7-060.3-*	60.3	2										
	PC-S-**-9-7-063.5-*	63.5		2 1/2									
	PC-S-**-9-7-070-*	70		2 3/4									
	PC-S-**-9-7-073-*	73											
PC-S-**-9-7-076.1-*	76.1	2 1/2	3										
8	PC-S-**-9-8-088.9-*	88.9	3	3 1/2	147	120	116	0.8	30	144	120	5	M6 x 140
	PC-S-**-9-8-102-*	102		4									

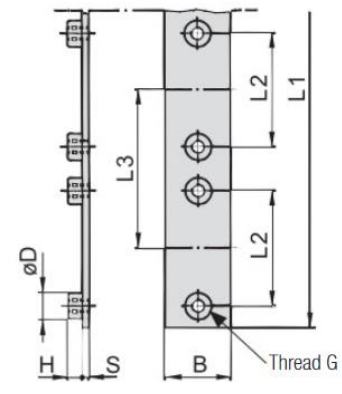
**G12 STANDARD SERIES COVER PLATE WITH GROUP BASE PLATE SET
(CLAMP BODY + COVER PLATE + GROUP BASE PLATE + HEX BOLT)**



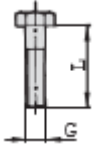
Clamp Body



Cover Plate



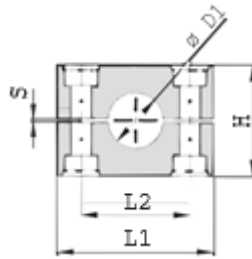
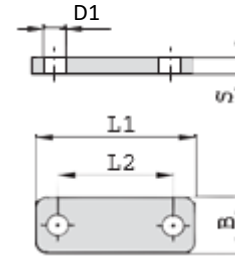
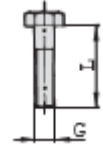
Group Weld Plate



Hex Bolt

*NOTES: 2 to 10 sets in a horizontal row are available.

Series	Order Code	Pipe/ Hose/ Tube O.D.	Nominal Inch Bore	Pipe/ Tube/ Hose Inch O.D.	Clamp Body					Cover Plate			Group Weld Plate						Bolt	
		D1	D1	D1	L1	L2	H	S	B	L1	L2	S	L1	L2	L3	B	S	H		D
1A	PC-S**-12-1A-006-*	6			37	20	27	0.4	30	34	20	3	373	20	37	30	4	6.5	12	M6 x 30
	PC-S**-12-1A-006.4-*	6.4		1/4																
	PC-S**-12-1A-008-*	8		5/16																
	PC-S**-12-1A-009.5-*	9.5		3/8																
	PC-S**-12-1A-010-*	10	1/8																	
PC-S**-12-1A-012-*	12																			
2	PC-S**-12-2-012.7-*	12.7		1/2	42	26	33	0.6	30	40.5	26	3	442	26	44	30	4	6.5	12	M6 x 35
	PC-S**-12-2-013.5-*	13.5	1/4																	
	PC-S**-12-2-014-*	14																		
	PC-S**-12-2-015-*	15																		
	PC-S**-12-2-016-*	16		5/8																
	PC-S**-12-2-017.2-*	17.2	3/8																	
PC-S**-12-2-018-*	18																			
3	PC-S**-12-3-019-*	19		3/4	50	33	36	0.6	30	48	33	3	521	33	52	30	4	6.5	12	M6 x 40
	PC-S**-12-3-020-*	20																		
	PC-S**-12-3-021.3-*	21.3	1/2																	
	PC-S**-12-3-022-*	22		7/8																
	PC-S**-12-3-025-*	25																		
PC-S**-12-3-025.4-*	25.4		1																	
4	PC-S**-12-4-026.9-*	26.9	3/4		59	40	42	0.6	30	57	40	3	300	40	60	30	4	6.5	12	M6 x 45
	PC-S**-12-4-028-*	28																		
	PC-S**-12-4-030-*	30																		
5	PC-S**-12-5-032-*	32		1 1/4	71	52	58	0.8	30	70	52	3	378	52	75	30	4	6.5	12	M6 x 60
	PC-S**-12-5-033.7-*	33.7	1																	
	PC-S**-12-5-035-*	35																		
	PC-S**-12-5-038-*	38		1 1/2																
	PC-S**-12-5-040-*	40																		
PC-S**-12-5-042-*	42	1 1/4																		
6	PC-S**-12-6-044.5-*	44.5		1 3/4	86	66	66	0.8	30	86	66	3	450	66	90	30	4	6.5	12	M6 x 70
	PC-S**-12-6-048.3-*	48.3	1 1/2																	
	PC-S**-12-6-050.8-*	50.8		2																
7	PC-S**-12-7-057.2-*	57.2		2 1/4	121	94	93	0.8	30	118	94	5	-	-	-	-	-	-	-	M6 x 100
	PC-S**-12-7-060.3-*	60.3	2																	
	PC-S**-12-7-063.5-*	63.5		2 1/2																
	PC-S**-12-7-070-*	70		2 3/4																
	PC-S**-12-7-073-*	73																		
PC-S**-12-7-076.1-*	76.1	2 1/2	3																	
8	PC-S**-12-8-088.9-*	88.9	3	3 1/2	147	120	116	0.8	30	144	120	5	-	-	-	-	-	-	-	M6 x 125
	PC-S**-12-8-102-*	102		4																

G13 STANDARD SERIES COVER PLATE ONLY SET (HEX BOLTS + COVER PLATE + CLAMP BODY)

Clamp Body

Cover Plate

Hex Bolt

Series	Order Code	Pipe/ Hose/ Tube O.D.	Nominal Inch Bore	Pipe/ Tube/ Hose Inch O.D.	Clamp Body					Cover Plate			Bolt
		D1	D1	D1	L1	L2	H	S	B	L1	L2	S	
1	PC-S**-13-1-006-*	6			28	9.5	26	0.4	30	28	9.5	3	M6 x 30
	PC-S**-13-1-006.4-*	6.4		1/4									
	PC-S**-13-1-008-*	8		5/16									
	PC-S**-13-1-009.5-*	9.5		3/8									
	PC-S**-13-1-010-*	10	1/8										
1A	PC-S**-13-1A-006-*	6			37	20	26	0.4	30	34	20	3	M6 x 30
	PC-S**-13-1A-006.4-*	6.4		1/4									
	PC-S**-13-1A-008-*	8		5/16									
	PC-S**-13-1A-009.5-*	9.5		3/8									
	PC-S**-13-1A-010-*	10	1/8										
2	PC-S**-13-2-012.7-*	12			42	26	32	0.6	30	40.5	26	3	M6 x 35
	PC-S**-13-2-013.5-*	12.7		1/2									
	PC-S**-13-2-013.5-*	13.5	1/4										
	PC-S**-13-2-014-*	14											
	PC-S**-13-2-015-*	15											
	PC-S**-13-2-016-*	16		5/8									
	PC-S**-13-2-017.2-*	17.2	3/8										
3	PC-S**-13-3-019-*	18			50	33	35.5	0.6	30	48	33	3	M6 x 40
	PC-S**-13-3-021.3-*	19		3/4									
	PC-S**-13-3-020-*	20											
	PC-S**-13-3-021.3-*	21.3	1/2										
	PC-S**-13-3-022-*	22		7/8									
	PC-S**-13-3-025.4-*	25.4		1									
4	PC-S**-13-4-026.9-*	25.4			59	40	41.5	0.6	30	57	40	3	M6 x 45
	PC-S**-13-4-028-*	26.9	3/4										
	PC-S**-13-4-030-*	28											
5	PC-S**-13-5-032-*	30			71	52	56.5	0.8	30	70	52	3	M6 x 60
	PC-S**-13-5-033.7-*	32		1 1/4									
	PC-S**-13-5-033.7-*	33.7	1										
	PC-S**-13-5-035-*	35											
	PC-S**-13-5-038-*	38		1 1/2									
6	PC-S**-13-5-040-*	40			86	66	64.5	0.8	30	86	66	3	M6 x 70
	PC-S**-13-5-042-*	42	1 1/4										
	PC-S**-13-6-044.5-*	44.5		1 3/4									
	PC-S**-13-6-048.3-*	48.3	1 1/2										
7	PC-S**-13-6-050.8-*	50.8		2	121	94	92	0.8	30	118	94	5	M6 x 100
	PC-S**-13-7-057.2-*	57.2		2 1/4									
	PC-S**-13-7-060.3-*	60.3	2										
	PC-S**-13-7-063.5-*	63.5		2 1/2									
	PC-S**-13-7-070-*	70		2 3/4									
	PC-S**-13-7-073-*	73											
8	PC-S**-13-7-076.1-*	76.1	2 1/2	3	147	120	116	0.8	30	144	120	5	M6 x 125
	PC-S**-13-8-088.9-*	88.9	3	3 1/2									
	PC-S**-13-8-102-*	102		4									



TUBE CLAMPS STANDARD SERIES

TUBECLO

Conditions of Use of Catalogue:

The information in the catalogue are not binding and in order to improve distribution, Tubeclo reserves the right to make any change including size and pressure ratings considered necessary at any time and without prior notice.

According to the copyright and the civil law, any reproduction (also partial) of figures and texts of this catalogue by means of electronic, mechanical, photocopies, microfilms, recordings or other is forbidden without Tubeclo's authorization.

Catalogue Version: 2023