

**WEBSITE:**

[www.tubeclo.com](http://www.tubeclo.com)



# TUBE CLAMPS HEAVY SERIES

## Specification

According to DIN 3015, Part 2

### Size Range

- Heavy Series (6 – 406mm)

### Accessories Material

- Galvanized Carbon Steel ST 37 (W3)
- Stainless Steel SS316 (W5)

### Clamp Body Material and Temperature Range

- Polypropylene, PP (-30 Deg C to 90 Deg C)
- Polyamide, PA (-40 Deg C to 120 Deg C)
- Aluminium, AL (Up to 300 Deg C)



**Heavy Series Pipe Clamps**

## Heavy Series Clamps Recommended Torque Values

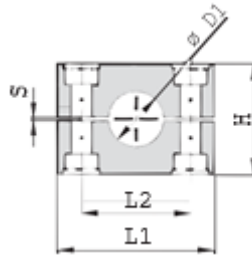
Group	Polypropylene Tightening Torque (N-m)	Polypropylene Tightening Torque (ft-lb)	Polyamide Tightening Torque (N-m)	Polyamide Tightening Torque (ft-lb)	Aluminium Tightening Torque (N-m)	Aluminium Tightening Torque (ft-lb)
3S	12	9	20	15	30	22
4S	12	9	20	15	30	22
5S	15	11	25	18	35	26
6S	30	22	40	30	55	41
7S	45	33	55	41	120	86
8S	80	59	150	111	220	162
9S	110	81	200	148	250	184
10S	180	133	350	258	500	369
11S	200	148	370	273	500	369
12S	270	199	450	332	600	443

**Ordering Information**

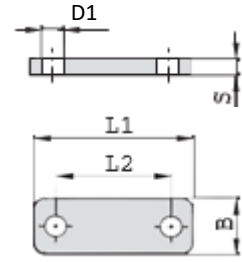
PC	-	H	-	PP	-	1	-	3S	-	006	-	C
I		II		III		IV		V		VI		VII

<b>I</b>	<b>Type of Item</b>	:	PC	Pipe Clamp
<b>II</b>	<b>Series</b>	:	H	Heavy
<b>III</b>	<b>Material of Clamp Body</b>	:	PP PA AL	Polypropylene Polyamide Aluminium
<b>IV</b>	<b>Group</b>	:	1 2 3 4 5 6 7 8 9 10	Complete Set Cover Plate with Rail Nut Set Double Stack Complete Set Cover Plate Only Set Double Clamps Complete Set Cover Plate with Elongated Weld Plate Set Cover Plate with Mounting Rail Nut and Cap Screw Set Cover Plate with Mounting Rail and Hex Bolt Set Double/ Triple Stack Complete Set Cover Plate with Long Hex Bolt Set
<b>V</b>	<b>Size Series</b>	:	3S 4S 5S 6S 7S 8S 9S 10S 11S 12S	Group 3S Group 4S Group 5S Group 6S Group 7S Group 8S Group 9S Group 10S Group 11S Group 12S
<b>VI</b>	<b>Pipe O.D.</b>	:	MM	Metric Size
<b>VII</b>	<b>Material of Metal Parts</b>	:	C SS	Carbon Steel Stainless Steel SS316

G1 HEAVY SERIES COMPLETE SET (HEX BOLTS + COVER PLATE + CLAMP BODY + WELD PLATE)

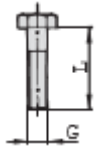
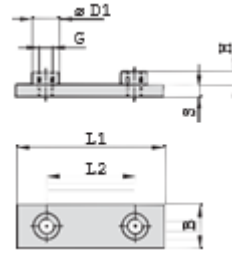


Clamp Body



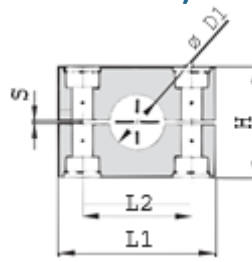
Cover Plate

Series	Order Code	Pipe/ Hose/ Tube	Nominal Inch Bore	Pipe/ Tube/ Hose	Clamp Body					Cover Plate				
		O.D.		Inch O.D.	L1	L2	H	S	B	L1	L2	S	B	D1
		D1	D1	D1										
3S	PC-H**-1-3S-006-*	6			55	33	30.5	0.6	30.5	55	33	8	30	11
	PC-H**-1-3S-006.4-*	6.4		1/4										
	PC-H**-1-3S-008-*	8		5/16										
	PC-H**-1-3S-009.5-*	9.5		3/8										
	PC-H**-1-3S-010-*	10	1/8											
	PC-H**-1-3S-012-*	12												
	PC-H**-1-3S-012.7-*	12.7		1/2										
	PC-H**-1-3S-013.5-*	13.5	1/4											
	PC-H**-1-3S-014-*	14												
	PC-H**-1-3S-015-*	15												
	PC-H**-1-3S-016-*	16		5/8										
	PC-H**-1-3S-017.2-*	17.2	3/8											
PC-H**-1-3S-018-*	18													
4S	PC-H**-1-4S-019-*	19		3/4	70	45	46.5	0.6	30.5	70	45	8	30	11
	PC-H**-1-4S-020-*	20												
	PC-H**-1-4S-021.3-*	21.3	1/2											
	PC-H**-1-4S-022-*	22		7/8										
	PC-H**-1-4S-025-*	25												
	PC-H**-1-4S-025.4-*	25.4		1										
	PC-H**-1-4S-026.9-*	26.9	3/4											
	PC-H**-1-4S-028-*	28												
	PC-H**-1-4S-030-*	30												
	PC-H**-1-4S-030-*	30												
5S	PC-H**-1-5S-030-*	30			85	60	58	0.6	30.5	85	60	8	30	11
	PC-H**-1-5S-032-*	32		1 1/4										
	PC-H**-1-5S-033.7-*	33.7	1											
	PC-H**-1-5S-035-*	35												
	PC-H**-1-5S-038-*	38		1 1/2										
	PC-H**-1-5S-040-*	40												
	PC-H**-1-5S-042-*	42	1 1/4											
	PC-H**-1-5S-042-*	42												
6S	PC-H**-1-6S-038-*	38		1 1/2	115	90	87	2	45	115	90	10	45	14
	PC-H**-1-6S-042-*	42	1 1/4											
	PC-H**-1-6S-044.5-*	44.5		1 3/4										
	PC-H**-1-6S-048.3-*	48.3	1 1/2											
	PC-H**-1-6S-050.8-*	50.8		2										
	PC-H**-1-6S-055-*	55												
	PC-H**-1-6S-057-*	57		2 1/4										
	PC-H**-1-6S-060.3-*	60.3	2											
	PC-H**-1-6S-063.5-*	63.5		2 1/2										
	PC-H**-1-6S-065-*	65												
PC-H**-1-6S-070-*	70		2 3/4											
7S	PC-H**-1-7S-065-*	65			152	122	120	2	60	152	122	10	60	19
	PC-H**-1-7S-070-*	70												
	PC-H**-1-7S-073-*	73		2 7/8										
	PC-H**-1-7S-075-*	75												
	PC-H**-1-7S-076.1-*	76.1	2 1/2	3										
	PC-H**-1-7S-080-*	80												
	PC-H**-1-7S-082.5-*	82.5		3 1/4										
	PC-H**-1-7S-088.9-*	88.9	3	3 1/2										
8S	PC-H**-1-8S-088.9-*	88.9	3	3 1/2	206	168	168	2	80	206	168	15	80	22
	PC-H**-1-8S-100-*	100												
	PC-H**-1-8S-102-*	102	3 1/2											
	PC-H**-1-8S-108-*	108		4 1/4										
	PC-H**-1-8S-114-*	114	4											
	PC-H**-1-8S-127-*	127		5										
	PC-H**-1-8S-133-*	133		5 1/4										
	PC-H**-1-8S-133-*	133		5 1/4										
9S	PC-H**-1-9S-133-*	133			251	205	200	3	91	251	205	15	90	26
	PC-H**-1-9S-140-*	140	5											
	PC-H**-1-9S-152-*	152		6										
	PC-H**-1-9S-159-*	159		6 1/4										
	PC-H**-1-9S-165-*	165		6 1/2										
10S	PC-H**-1-9S-168-*	168	6		326	265	270	3	120	320	265	25	120	35
	PC-H**-1-10S-168-*	168	6											
	PC-H**-1-10S-177.8-*	177.8		7										
	PC-H**-1-10S-193.7-*	193.7		7 5/8										
	PC-H**-1-10S-216-*	216		8 1/2										
11S	PC-H**-1-10S-219-*	219	8		470	395	410	8	162	470	395	30	160	35
	PC-H**-1-11S-219-*	219	8											
	PC-H**-1-11S-273-*	273	10											
	PC-H**-1-11S-324-*	324	12											
12S	PC-H**-1-12S-356-*	356	14		630	534	530	20	182	630	534	30	180	35
	PC-H**-1-12S-406-*	406	16											

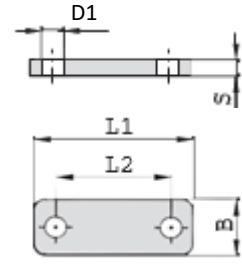
**G1 HEAVY SERIES COMPLETE SET (HEX BOLTS + COVER PLATE + CLAMP BODY + WELD PLATE)**

**Weld Plate**
**Hex Bolt**

Series	Order Code	Pipe/ Hose/ Tube O.D.	Nominal Inch Bore	Pipe/ Tube/ Hose Inch O.D.	Weld Plate							Bolt
		D1	D1	D1	L1	L2	B	S	H	G	D1	
35	PC-H**-1-3S-006.*	6			74	33	30	8	8	M10	18	M10 x 45
	PC-H**-1-3S-006.4.*	6.4		1/4								
	PC-H**-1-3S-008.*	8		5/16								
	PC-H**-1-3S-009.5.*	9.5		3/8								
	PC-H**-1-3S-010.*	10	1/8									
	PC-H**-1-3S-012.*	12										
	PC-H**-1-3S-012.7.*	12.7		1/2								
	PC-H**-1-3S-013.5.*	13.5	1/4									
	PC-H**-1-3S-014.*	14										
	PC-H**-1-3S-015.*	15										
	PC-H**-1-3S-016.*	16		5/8								
45	PC-H**-1-3S-017.2.*	17.2	3/8		86	45	30	8	8	M10	18	M10 x 60
	PC-H**-1-3S-018.*	18										
	PC-H**-1-4S-019.*	19		3/4								
	PC-H**-1-4S-020.*	20										
	PC-H**-1-4S-021.3.*	21.3	1/2									
	PC-H**-1-4S-022.*	22		7/8								
	PC-H**-1-4S-025.*	25										
	PC-H**-1-4S-025.4.*	25.4		1								
	PC-H**-1-4S-026.9.*	26.9	3/4									
	PC-H**-1-4S-028.*	28										
	PC-H**-1-4S-030.*	30										
55	PC-H**-1-5S-030.*	30			100	60	30	8	8	M10	18	M10 x 70
	PC-H**-1-5S-032.*	32		1 1/4								
	PC-H**-1-5S-033.7.*	33.7	1									
	PC-H**-1-5S-035.*	35										
	PC-H**-1-5S-038.*	38		1 1/2								
	PC-H**-1-5S-040.*	40										
	PC-H**-1-5S-042.*	42	1 1/4									
65	PC-H**-1-6S-038.*	38		1 1/2	140	90	45	10	8	M12	20	M12 x 100
	PC-H**-1-6S-042.*	42	1 1/4									
	PC-H**-1-6S-044.5.*	44.5		1 3/4								
	PC-H**-1-6S-048.3.*	48.3	1 1/2									
	PC-H**-1-6S-050.8.*	50.8		2								
	PC-H**-1-6S-055.*	55										
	PC-H**-1-6S-057.*	57		2 1/4								
	PC-H**-1-6S-060.3.*	60.3	2									
	PC-H**-1-6S-063.5.*	63.5		2 1/2								
	PC-H**-1-6S-065.*	65										
	PC-H**-1-6S-070.*	70		2 3/4								
75	PC-H**-1-7S-065.*	65			180	122	60	10	12	M16	24	M16 x 130
	PC-H**-1-7S-070.*	70										
	PC-H**-1-7S-073.*	73		2 7/8								
	PC-H**-1-7S-075.*	75										
	PC-H**-1-7S-076.1.*	76.1	2 1/2	3								
	PC-H**-1-7S-080.*	80										
	PC-H**-1-7S-082.5.*	82.5		3 1/4								
	PC-H**-1-7S-088.9.*	88.9	3	3 1/2								
85	PC-H**-1-8S-088.9.*	88.9	3	3 1/2	226	168	80	15	18	M20	30	M20 x 190
	PC-H**-1-8S-100.*	100										
	PC-H**-1-8S-102.*	102	3 1/2									
	PC-H**-1-8S-108.*	108		4 1/4								
	PC-H**-1-8S-114.*	114	4									
	PC-H**-1-8S-127.*	127		5								
	PC-H**-1-8S-133.*	133		5 1/4								
95	PC-H**-1-9S-133.*	133		5 1/4	270	205	90	15	21	M24	35	M24 x 220
	PC-H**-1-9S-140.*	140	5									
	PC-H**-1-9S-152.*	152		6								
	PC-H**-1-9S-159.*	159		6 1/4								
	PC-H**-1-9S-165.*	165		6 1/2								
105	PC-H**-1-9S-168.*	168	6		340	265	120	25	21	M30	45	M30 x 300
	PC-H**-1-10S-168.*	168	6									
	PC-H**-1-10S-177.8.*	177.8		7								
	PC-H**-1-10S-193.7.*	193.7		7 5/8								
	PC-H**-1-10S-216.*	216		8 1/2								
115	PC-H**-1-10S-219.*	219	8		520	395	160	30	38	M30	50	M30 x 450
	PC-H**-1-11S-219.*	219	8									
	PC-H**-1-11S-273.*	273	10									
125	PC-H**-1-11S-324.*	324	12		680	534	180	30	38	M30	50	M30 x 560
	PC-H**-1-12S-356.*	356	14									
	PC-H**-1-12S-406.*	406	16									

**G2 HEAVY SERIES COVER PLATE WITH RAIL NUT SET  
(HEX BOLTS + COVER PLATE + CLAMP BODY + RAIL NUTS)**

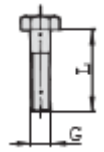
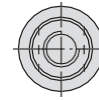
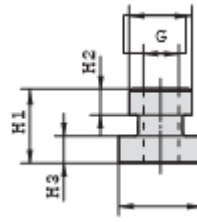


**Clamp Body**



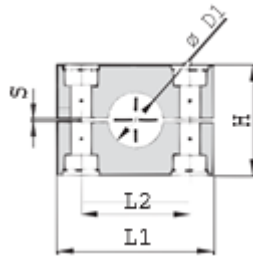
**Cover Plate**

Series	Order Code	Pipe/ Hose/ Tube O.D.	Nominal Inch Bore	Pipe/ Tube/ Hose Inch O.D.	Clamp Body					Cover Plate				
					L1	L2	H	S	B	L1	L2	S	B	D1
35	PC-H**-2-3S-006.*	6			55	33	30.5	0.6	30.5	55	33	8	30	11
	PC-H**-2-3S-006.4.*	6.4		1/4										
	PC-H**-2-3S-008.*	8		5/16										
	PC-H**-2-3S-009.5.*	9.5		3/8										
	PC-H**-2-3S-010.*	10	1/8											
	PC-H**-2-3S-012.*	12												
	PC-H**-2-3S-012.7.*	12.7		1/2										
	PC-H**-2-3S-013.5.*	13.5	1/4											
	PC-H**-2-3S-014.*	14												
	PC-H**-2-3S-015.*	15												
	PC-H**-2-3S-016.*	16		5/8										
	PC-H**-2-3S-017.2.*	17.2	3/8											
PC-H**-2-3S-018.*	18													
PC-H**-2-4S-019.*	19		3/4											
45	PC-H**-2-4S-020.*	20			70	45	46.5	0.6	30.5	70	45	8	30	11
	PC-H**-2-4S-021.3.*	21.3	1/2											
	PC-H**-2-4S-022.*	22		7/8										
	PC-H**-2-4S-025.*	25												
	PC-H**-2-4S-025.4.*	25.4		1										
	PC-H**-2-4S-026.9.*	26.9	3/4											
	PC-H**-2-4S-028.*	28												
	PC-H**-2-4S-030.*	30												
55	PC-H**-2-5S-030.*	30			85	60	58	0.6	30.5	85	60	8	30	11
	PC-H**-2-5S-032.*	32		1 1/4										
	PC-H**-2-5S-033.7.*	33.7	1											
	PC-H**-2-5S-035.*	35												
	PC-H**-2-5S-038.*	38		1 1/2										
	PC-H**-2-5S-040.*	40												
PC-H**-2-5S-042.*	42	1 1/4												
65	PC-H**-2-6S-038.*	38		1 1/2	115	90	87	2	45	115	90	10	45	14
	PC-H**-2-6S-042.*	42	1 1/4											
	PC-H**-2-6S-044.5.*	44.5		1 3/4										
	PC-H**-2-6S-048.3.*	48.3	1 1/2											
	PC-H**-2-6S-050.8.*	50.8		2										
	PC-H**-2-6S-055.*	55												
	PC-H**-2-6S-057.*	57		2 1/4										
	PC-H**-2-6S-060.3.*	60.3	2											
	PC-H**-2-6S-063.5.*	63.5		2 1/2										
	PC-H**-2-6S-065.*	65												
PC-H**-2-6S-070.*	70		2 3/4											
75	PC-H**-2-7S-065.*	65			152	122	120	2	60	152	122	10	60	19
	PC-H**-2-7S-070.*	70												
	PC-H**-2-7S-073.*	73		2 7/8										
	PC-H**-2-7S-075.*	75												
	PC-H**-2-7S-076.1.*	76.1	2 1/2	3										
	PC-H**-2-7S-080.*	80												
	PC-H**-2-7S-082.5.*	82.5		3 1/4										
	PC-H**-2-7S-088.9.*	88.9	3	3 1/2										
PC-H**-2-8S-088.9.*	88.9	3	3 1/2											
85	PC-H**-2-8S-100.*	100			206	168	168	2	80	206	168	15	80	22
	PC-H**-2-8S-102.*	102	3 1/2											
	PC-H**-2-8S-108.*	108		4 1/4										
	PC-H**-2-8S-114.*	114	4											
	PC-H**-2-8S-127.*	127		5										
	PC-H**-2-8S-133.*	133		5 1/4										
95	PC-H**-2-9S-133.*	133		5 1/4	251	205	200	3	91	251	205	15	90	26
	PC-H**-2-9S-140.*	140	5											
	PC-H**-2-9S-152.*	152		6										
	PC-H**-2-9S-159.*	159		6 1/4										
	PC-H**-2-9S-165.*	165		6 1/2										
105	PC-H**-2-9S-168.*	168	6		326	265	270	3	120	320	265	25	120	35
	PC-H**-2-10S-168.*	168	6											
	PC-H**-2-10S-177.8.*	177.8		7										
	PC-H**-2-10S-193.7.*	193.7		7 5/8										
115	PC-H**-2-10S-216.*	216		8 1/2	470	395	410	8	162	470	395	30	160	35
	PC-H**-2-10S-219.*	219	8											
	PC-H**-2-11S-219.*	219	8											
125	PC-H**-2-11S-273.*	273	10		630	534	530	20	182	630	534	30	180	35
	PC-H**-2-11S-324.*	324	12											
	PC-H**-2-12S-356.*	356	14											
	PC-H**-2-12S-406.*	406	16											

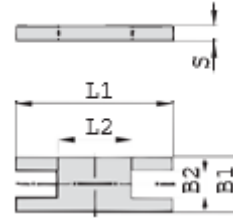
**G2 HEAVY SERIES COVER PLATE WITH RAIL NUT SET  
(HEX BOLTS + COVER PLATE + CLAMP BODY + RAIL NUTS)**

**Rail Nut**
**Hex Bolt**

Series	Order Code	Pipe/ Hose/ Tube	Nominal Inch Bore	Pipe/ Tube/ Hose	Mounting Rail Nut				Hexagon Bolt
		O.D.		Inch O.D.	H1	H2	H3	Thread G	
		D1	D1	D1					
3S	PC-H**-2-3S-006.*	6			21	7,6	7,4	M10	M10 x 45
	PC-H**-2-3S-006.4.*	6.4		1/4					
	PC-H**-2-3S-008.*	8		5/16					
	PC-H**-2-3S-009.5.*	9.5		3/8					
	PC-H**-2-3S-010.*	10	1/8						
	PC-H**-2-3S-012.*	12							
	PC-H**-2-3S-012.7.*	12.7		1/2					
	PC-H**-2-3S-013.5.*	13.5	1/4						
	PC-H**-2-3S-014.*	14							
	PC-H**-2-3S-015.*	15		5/8					
	PC-H**-2-3S-016.*	16							
	PC-H**-2-3S-017.2.*	17.2	3/8						
PC-H**-2-3S-018.*	18								
4S	PC-H**-2-4S-019.*	19		3/4	.83	.30	.29	M12	M10 x 60
	PC-H**-2-4S-020.*	20							
	PC-H**-2-4S-021.3.*	21.3	1/2						
	PC-H**-2-4S-022.*	22		7/8					
	PC-H**-2-4S-025.*	25							
	PC-H**-2-4S-025.4.*	25.4		1					
	PC-H**-2-4S-026.9.*	26.9	3/4						
	PC-H**-2-4S-028.*	28							
	PC-H**-2-4S-030.*	30							
	PC-H**-2-4S-030.*	30							
5S	PC-H**-2-5S-032.*	32		1 1/4	23	8,8	8,8	M12	M10 x 70
	PC-H**-2-5S-033.7.*	33.7	1						
	PC-H**-2-5S-035.*	35							
	PC-H**-2-5S-038.*	38		1 1/2					
	PC-H**-2-5S-040.*	40							
	PC-H**-2-5S-042.*	42	1 1/4						
	PC-H**-2-6S-038.*	38		1 1/2					
	PC-H**-2-6S-042.*	42	1 1/4						
6S	PC-H**-2-6S-044.5.*	44.5		1 3/4	-	-	-	-	M12 x 100
	PC-H**-2-6S-048.3.*	48.3	1 1/2						
	PC-H**-2-6S-050.8.*	50.8		2					
	PC-H**-2-6S-055.*	55							
	PC-H**-2-6S-057.*	57		2 1/4					
	PC-H**-2-6S-060.3.*	60.3	2						
	PC-H**-2-6S-063.5.*	63.5		2 1/2					
	PC-H**-2-6S-065.*	65							
	PC-H**-2-6S-070.*	70		2 3/4					
	PC-H**-2-6S-070.*	70							
7S	PC-H**-2-7S-065.*	65			-	-	-	-	M16 x 130
	PC-H**-2-7S-070.*	70							
	PC-H**-2-7S-073.*	73		2 7/8					
	PC-H**-2-7S-075.*	75							
	PC-H**-2-7S-076.1.*	76.1	2 1/2	3					
	PC-H**-2-7S-080.*	80							
	PC-H**-2-7S-082.5.*	82.5		3 1/4					
	PC-H**-2-7S-088.9.*	88.9	3	3 1/2					
8S	PC-H**-2-8S-088.9.*	88.9	3	3 1/2	-	-	-	-	M20 x 190
	PC-H**-2-8S-100.*	100							
	PC-H**-2-8S-102.*	102	3 1/2						
	PC-H**-2-8S-108.*	108		4 1/4					
	PC-H**-2-8S-114.*	114	4						
	PC-H**-2-8S-127.*	127		5					
	PC-H**-2-8S-133.*	133		5 1/4					
	PC-H**-2-8S-133.*	133		5 1/4					
9S	PC-H**-2-9S-140.*	140	5		-	-	-	-	M24 x 220t
	PC-H**-2-9S-152.*	152		6					
	PC-H**-2-9S-159.*	159		6 1/4					
	PC-H**-2-9S-165.*	165		6 1/2					
	PC-H**-2-9S-168.*	168	6						
	PC-H**-2-9S-168.*	168	6						
10S	PC-H**-2-10S-168.*	168	6		-	-	-	-	M30 x 300t
	PC-H**-2-10S-177.8.*	177.8		7					
	PC-H**-2-10S-193.7.*	193.7		7 5/8					
	PC-H**-2-10S-216.*	216		8 1/2					
	PC-H**-2-10S-219.*	219	8						
11S	PC-H**-2-11S-219.*	219	8		-	-	-	-	M30 x 450
	PC-H**-2-11S-273.*	273	10						
	PC-H**-2-11S-324.*	324	12						
12S	PC-H**-2-12S-356.*	356	14		-	-	-	-	M30 x 560
	PC-H**-2-12S-406.*	406	16						

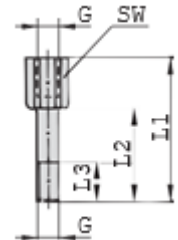
**G3 HEAVY SERIES DOUBLE STACK SET  
(STACKING BOLTS + SAFETY LOCKING PLATE + CLAMP BODY)**



Clamp Body



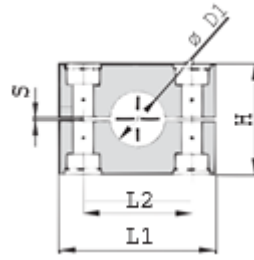
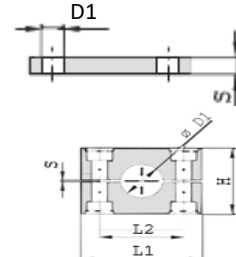
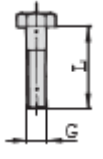
Safety Locking Plate



Stacking Bolt

Series	Order Code	Pipe/ Hose/ Tube	Nominal	Pipe/ Tube/ Hose	Clamp Body					Safety Locking Plate					Stacking Bolt																				
		O.D.	Inch	O.D.	L1	L2	H	S	B	L1	L2	B1	B2	S	G	L1	L2	L3	SW																
		D1	D1	D1																															
3S	PC-H**-3-3S-006.*	6			55	33	30.5	0.6	30.5	57	13	30	15.2	8	M10	49	25	15	15																
	PC-H**-3-3S-006.4.*	6.4		1/4																															
	PC-H**-3-3S-008.*	8		5/16																															
	PC-H**-3-3S-009.5.*	9.5		3/8																															
	PC-H**-3-3S-010.*	10	1/8																																
	PC-H**-3-3S-012.*	12																																	
	PC-H**-3-3S-012.7.*	12.7		1/2																															
	PC-H**-3-3S-013.5.*	13.5	1/4																																
	PC-H**-3-3S-014.*	14																																	
	PC-H**-3-3S-015.*	15																																	
	PC-H**-3-3S-016.*	16		5/8																															
	PC-H**-3-3S-017.2.*	17.2	3/8																																
PC-H**-3-3S-018.*	18																																		
4S	PC-H**-3-4S-019.*	19		3/4	70	45	46.5	0.6	30.5	70	26	30	15.2	8	M10	65	40	15	15																
	PC-H**-3-4S-020.*	20																																	
	PC-H**-3-4S-021.3.*	21.3	1/2																																
	PC-H**-3-4S-022.*	22		7/8																															
	PC-H**-3-4S-025.*	25																																	
	PC-H**-3-4S-025.4.*	25.4		1																															
	PC-H**-3-4S-026.9.*	26.9	3/4																																
	PC-H**-3-4S-028.*	28																																	
	PC-H**-3-4S-030.*	30																																	
	PC-H**-3-5S-030.*	30																																	
5S	PC-H**-3-5S-032.*	32		1 1/4	85	60	58	0.6	30.5	85	40	30	15.2	8	M10	77	51	15	15																
	PC-H**-3-5S-033.7.*	33.7	1																																
	PC-H**-3-5S-035.*	35																																	
	PC-H**-3-5S-038.*	38		1 1/2																															
	PC-H**-3-5S-040.*	40																																	
	PC-H**-3-5S-042.*	42	1 1/4																																
	PC-H**-3-6S-038.*	38		1 1/2																															
	PC-H**-3-6S-042.*	42	1 1/4																																
6S	PC-H**-3-6S-044.5.*	44.5		1 3/4	115	90	87	2	45	116	68	45	17.2	10	M12	110	82	18	17																
	PC-H**-3-6S-048.3.*	48.3	1 1/2																																
	PC-H**-3-6S-050.8.*	50.8		2																															
	PC-H**-3-6S-055.*	55																																	
	PC-H**-3-6S-057.*	57		2 1/4																															
	PC-H**-3-6S-060.3.*	60.3	2																																
	PC-H**-3-6S-063.5.*	63.5		2 1/2																															
	PC-H**-3-6S-065.*	65																																	
	PC-H**-3-6S-070.*	70		2 3/4																															
	PC-H**-3-7S-065.*	65																																	
	7S	PC-H**-3-7S-070.*	70																		152	122	120	2	60	153	96	60	22	10	M16	144	110	24	21
		PC-H**-3-7S-073.*	73																	2 7/8															
PC-H**-3-7S-075.*		75																																	
PC-H**-3-7S-076.1.*		76.1	2 1/2	3																															
PC-H**-3-7S-080.*		80																																	
PC-H**-3-7S-082.5.*		82.5		3 1/4																															
PC-H**-3-7S-088.9.*		88.9	3	3 1/2																															
PC-H**-3-8S-088.9.*		88.9	3	3 1/2																															
8S	PC-H**-3-8S-100.*	100			206	168	168	2	80	206	130	80	28	15	M20	200	150	30	27																
	PC-H**-3-8S-102.*	102	3 1/2																																
	PC-H**-3-8S-108.*	108		4 1/4																															
	PC-H**-3-8S-114.*	114	4																																
	PC-H**-3-8S-127.*	127		5																															
	PC-H**-3-8S-133.*	133		5 1/4																															
	PC-H**-3-9S-133.*	133		5 1/4																															
9S	PC-H**-3-9S-140.*	140	5		251	205	200	3	91	251	166	90	31	15	M24	240	180	50	30																
	PC-H**-3-9S-152.*	152		6																															
	PC-H**-3-9S-159.*	159		6 1/4																															
	PC-H**-3-9S-165.*	165		6 1/2																															
	PC-H**-3-9S-168.*	168	6																																
	PC-H**-3-10S-168.*	168	6																																
10S	PC-H**-3-10S-177.8.*	177.8		7	326	265	270	3	120	317	205	120	49	25	M30	331	256	62	46																
	PC-H**-3-10S-193.7.*	193.7		7 5/8																															
	PC-H**-3-10S-216.*	216		8 1/2																															
	PC-H**-3-10S-219.*	219	8																																

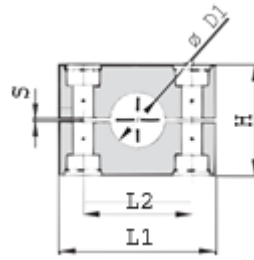


**G4 HEAVY SERIES COVER PLATE ONLY SET (HEX BOLTS + COVER PLATE + CLAMP BODY)**

**Clamp Body**

**Cover Plate**

**Hex Bolt**

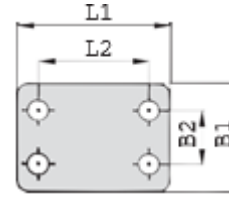
Series	Order Code	Pipe/ Hose/ Tube O.D.	Nominal Inch Bore	Pipe/ Tube/ Hose Inch O.D.	Clamp Body					Cover Plate					Bolt
					L1	L2	H	S	B	L1	L2	S	B	D1	
3S	PC-H**4-3S-006.*	6			55	33	30.5	0.6	30.5	55	33	8	30	11	M10 x 45
	PC-H**4-3S-006.4.*	6.4		1/4											
	PC-H**4-3S-008.*	8		5/16											
	PC-H**4-3S-009.5.*	9.5		3/8											
	PC-H**4-3S-010.*	10	1/8												
	PC-H**4-3S-012.*	12													
	PC-H**4-3S-012.7.*	12.7		1/2											
	PC-H**4-3S-013.5.*	13.5	1/4												
	PC-H**4-3S-014.*	14													
	PC-H**4-3S-015.*	15													
	PC-H**4-3S-016.*	16		5/8											
	PC-H**4-3S-017.2.*	17.2	3/8												
PC-H**4-3S-018.*	18														
PC-H**4-4S-019.*	19		3/4												
4S	PC-H**4-4S-020.*	20			70	45	46.5	0.6	30.5	70	45	8	30	11	M10 x 60
	PC-H**4-4S-021.3.*	21.3	1/2												
	PC-H**4-4S-022.*	22		7/8											
	PC-H**4-4S-025.*	25													
	PC-H**4-4S-025.4.*	25.4		1											
	PC-H**4-4S-026.9.*	26.9	3/4												
	PC-H**4-4S-028.*	28													
	PC-H**4-4S-030.*	30													
	PC-H**4-5S-030.*	30													
	PC-H**4-5S-032.*	32		1 1/4											
	PC-H**4-5S-033.7.*	33.7	1												
	PC-H**4-5S-035.*	35													
5S	PC-H**4-5S-038.*	38		1 1/2	85	60	58	0.6	30.5	85	60	8	30	11	M10 x 70
	PC-H**4-5S-040.*	40													
	PC-H**4-5S-042.*	42	1 1/4												
	PC-H**4-6S-038.*	38		1 1/2											
	PC-H**4-6S-042.*	42	1 1/4												
	PC-H**4-6S-044.5.*	44.5		1 3/4											
	PC-H**4-6S-048.3.*	48.3	1 1/2												
	PC-H**4-6S-050.8.*	50.8		2											
	PC-H**4-6S-055.*	55													
	PC-H**4-6S-057.*	57		2 1/4											
	PC-H**4-6S-060.3.*	60.3	2												
	PC-H**4-6S-063.5.*	63.5		2 1/2											
PC-H**4-6S-065.*	65														
PC-H**4-7S-065.*	65														
7S	PC-H**4-7S-070.*	70			152	122	120	2	60	152	122	10	60	19	M16 x 130
	PC-H**4-7S-073.*	73		2 7/8											
	PC-H**4-7S-075.*	75													
	PC-H**4-7S-076.1.*	76.1	2 1/2	3											
	PC-H**4-7S-080.*	80													
	PC-H**4-7S-082.5.*	82.5		3 1/4											
	PC-H**4-7S-088.9.*	88.9	3	3 1/2											
	PC-H**4-8S-088.9.*	88.9	3	3 1/2											
	PC-H**4-8S-100.*	100													
	PC-H**4-8S-102.*	102	3 1/2												
	PC-H**4-8S-108.*	108		4 1/4											
	PC-H**4-8S-114.*	114	4												
PC-H**4-8S-127.*	127		5												
PC-H**4-8S-133.*	133		5 1/4												
9S	PC-H**4-9S-133.*	133		5 1/4	251	205	200	3	91	251	205	15	90	26	M24 x 220
	PC-H**4-9S-140.*	140	5												
	PC-H**4-9S-152.*	152		6											
	PC-H**4-9S-159.*	159		6 1/4											
	PC-H**4-9S-165.*	165		6 1/2											
	PC-H**4-9S-168.*	168	6												
	PC-H**4-10S-168.*	168	6												
	PC-H**4-10S-177.8.*	177.8		7											
	PC-H**4-10S-193.7.*	193.7		7 5/8											
	PC-H**4-10S-216.*	216		8 1/2											
	PC-H**4-10S-219.*	219	8												
	PC-H**4-11S-219.*	219	8												
11S	PC-H**4-11S-273.*	273	10		470	395	410	8	162	470	395	30	160	35	M30 x 450
	PC-H**4-11S-324.*	324	12												
	PC-H**4-12S-356.*	356	14												
12S	PC-H**4-12S-406.*	406	16		630	534	530	20	182	630	534	30	180	35	M30 x 560

**G5 HEAVY SERIES DOUBLE CLAMPS COMPLETE SET**

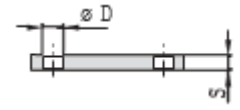
**(HEX BOLTS + DOUBLE CLAMPS COVER PLATE + CLAMP BODYS + DOUBLE CLAMPS WELD PLATE)**



**Clamp Body**



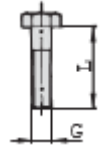
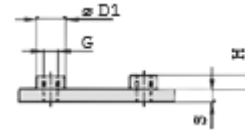
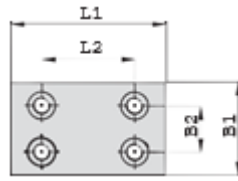
**Double Clamps Cover Plate**



Series	Order Code	Pipe/ Hose/ Tube	Nominal	Pipe/ Tube/ Hose	Clamp Body					Double Clamps Cover Plate					
		O.D.	Inch Bore	O.D.	L1	L2	H	S	B	L1	L2	B1	B2	S	D1
		D1	D1	D1											
3S	PC-H**-5-3S-006.*	6													
	PC-H**-5-3S-006.4.*	6.4		1/4											
	PC-H**-5-3S-008.*	8		5/16											
	PC-H**-5-3S-009.5.*	9.5		3/8											
	PC-H**-5-3S-010.*	10	1/8												
	PC-H**-5-3S-012.*	12													
	PC-H**-5-3S-012.7.*	12.7		1/2											
	PC-H**-5-3S-013.5.*	13.5	1/4		55	33	30.5	0.6	30.5	55	33	60	30.5	8	11
	PC-H**-5-3S-014.*	14													
	PC-H**-5-3S-015.*	15													
	PC-H**-5-3S-016.*	16		5/8											
PC-H**-5-3S-017.2.*	17.2	3/8													
PC-H**-5-3S-018.*	18														
PC-H**-5-4S-019.*	19		3/4												
PC-H**-5-4S-020.*	20														
PC-H**-5-4S-021.3.*	21.3	1/2													
PC-H**-5-4S-022.*	22		7/8												
PC-H**-5-4S-025.*	25														
PC-H**-5-4S-025.4.*	25.4		1												
PC-H**-5-4S-026.9.*	26.9	3/4													
PC-H**-5-4S-028.*	28														
PC-H**-5-4S-030.*	30														
PC-H**-5-5S-030.*	30														
PC-H**-5-5S-032.*	32		1 1/4												
PC-H**-5-5S-033.7.*	33.7	1													
PC-H**-5-5S-035.*	35														
PC-H**-5-5S-038.*	38		1 1/2												
PC-H**-5-5S-040.*	40														
PC-H**-5-5S-042.*	42	1 1/4													
PC-H**-5-6S-038.*	38		1 1/2												
PC-H**-5-6S-042.*	42	1 1/4													
PC-H**-5-6S-044.5.*	44.5		1 3/4												
PC-H**-5-6S-048.3.*	48.3	1 1/2													
PC-H**-5-6S-050.8.*	50.8		2												
PC-H**-5-6S-055.*	55														
PC-H**-5-6S-057.*	57		2 1/4												
PC-H**-5-6S-060.3.*	60.3	2													
PC-H**-5-6S-063.5.*	63.5		2 1/2												
PC-H**-5-6S-065.*	65														
PC-H**-5-6S-070.*	70		2 3/4												
PC-H**-5-7S-065.*	65														
PC-H**-5-7S-070.*	70														
PC-H**-5-7S-073.*	73		2 7/8												
PC-H**-5-7S-075.*	75														
PC-H**-5-7S-076.1.*	76.1	2 1/2	3												
PC-H**-5-7S-080.*	80														
PC-H**-5-7S-082.5.*	82.5		3 1/4												
PC-H**-5-7S-088.9.*	88.9	3	3 1/2												
PC-H**-5-8S-088.9.*	88.9	3	3 1/2												
PC-H**-5-8S-100.*	100														
PC-H**-5-8S-102.*	102	3 1/2													
PC-H**-5-8S-108.*	108		4 1/4												
PC-H**-5-8S-114.*	114	4													
PC-H**-5-8S-127.*	127		5												
PC-H**-5-8S-133.*	133		5 1/4												
PC-H**-5-9S-133.*	133		5 1/4												
PC-H**-5-9S-140.*	140	5													
PC-H**-5-9S-152.*	152		6												
PC-H**-5-9S-159.*	159		6 1/4												
PC-H**-5-9S-165.*	165		6 1/2												
PC-H**-5-9S-168.*	168	6													
PC-H**-5-10S-168.*	168	6													
PC-H**-5-10S-177.8.*	177.8		7												
PC-H**-5-10S-193.7.*	193.7		7 5/8												
PC-H**-5-10S-216.*	216		8 1/2												
PC-H**-5-10S-219.*	219	8													
PC-H**-5-11S-219.*	219	8													
PC-H**-5-11S-273.*	273	10													
PC-H**-5-11S-324.*	324	12													
PC-H**-5-12S-356.*	356	14													
PC-H**-5-12S-406.*	406	16													

**G5 HEAVY SERIES DOUBLE CLAMPS COMPLETE SET**

**(HEX BOLTS + DOUBLE CLAMPS COVER PLATE + CLAMP BODYS + DOUBLE CLAMPS WELD PLATE)**

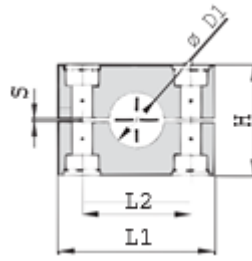


**Double Clamps Weld Plate**

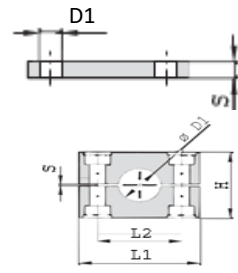
**Hex Bolt**

Series	Order Code	Pipe/ Hose/ Tube O.D.	Nominal Inch Bore	Pipe/ Tube/ Hose Inch O.D.	Double Clamps Weld Plate								Bolt
		D1	D1	D1	L1	L2	B1	B2	S	H	G	D1	
35	PC-H.**-5-3S-006.*	6			74	33	60	30.5	8	8	M10	18	M10 x 45
	PC-H.**-5-3S-006.4.*	6.4		1/4									
	PC-H.**-5-3S-008.*	8		5/16									
	PC-H.**-5-3S-009.5.*	9.5		3/8									
	PC-H.**-5-3S-010.*	10	1/8										
	PC-H.**-5-3S-012.*	12											
	PC-H.**-5-3S-012.7.*	12.7		1/2									
	PC-H.**-5-3S-013.5.*	13.5	1/4										
	PC-H.**-5-3S-014.*	14											
	PC-H.**-5-3S-015.*	15											
	PC-H.**-5-3S-016.*	16		5/8									
	PC-H.**-5-3S-017.2.*	17.2	3/8										
PC-H.**-5-3S-018.*	18												
PC-H.**-5-4S-019.*	19		3/4										
45	PC-H.**-5-4S-020.*	20			86	45	60	30.5	8	8	M10	18	M10 x 60
	PC-H.**-5-4S-021.3.*	21.3	1/2										
	PC-H.**-5-4S-022.*	22		7/8									
	PC-H.**-5-4S-025.*	25											
	PC-H.**-5-4S-025.4.*	25.4		1									
	PC-H.**-5-4S-026.9.*	26.9	3/4										
	PC-H.**-5-4S-028.*	28											
	PC-H.**-5-4S-030.*	30											
	PC-H.**-5-5S-030.*	30											
	PC-H.**-5-5S-032.*	32		1 1/4									
55	PC-H.**-5-5S-033.7.*	33.7	1		100	60	60	30.5	8	8	M10	18	M10 x 70
	PC-H.**-5-5S-035.*	35											
	PC-H.**-5-5S-038.*	38		1 1/2									
	PC-H.**-5-5S-040.*	40											
	PC-H.**-5-5S-042.*	42	1 1/4										
	PC-H.**-5-6S-038.*	38		1 1/2									
	PC-H.**-5-6S-042.*	42	1 1/4										
	PC-H.**-5-6S-044.5.*	44.5		1 3/4									
65	PC-H.**-5-6S-048.3.*	48.3	1 1/2		140	90	90	46	10	8	M12	20	M12 x 100
	PC-H.**-5-6S-050.8.*	50.8		2									
	PC-H.**-5-6S-055.*	55											
	PC-H.**-5-6S-057.*	57		2 1/4									
	PC-H.**-5-6S-060.3.*	60.3	2										
	PC-H.**-5-6S-063.5.*	63.5		2 1/2									
	PC-H.**-5-6S-065.*	65											
	PC-H.**-5-6S-070.*	70		2 3/4									
	PC-H.**-5-7S-065.*	65											
	PC-H.**-5-7S-070.*	70											
75	PC-H.**-5-7S-073.*	73		2 7/8	180	122	120	61	10	12	M16	24	M16 x 130
	PC-H.**-5-7S-075.*	75											
	PC-H.**-5-7S-076.1.*	76.1	2 1/2	3									
	PC-H.**-5-7S-080.*	80											
	PC-H.**-5-7S-082.5.*	82.5		3 1/4									
	PC-H.**-5-7S-088.9.*	88.9	3	3 1/2									
	PC-H.**-5-8S-088.9.*	88.9	3	3 1/2									
	PC-H.**-5-8S-100.*	100											
85	PC-H.**-5-8S-102.*	102	3 1/2		226	168	160	81	15	18	M20	30	M20 x 190
	PC-H.**-5-8S-108.*	108		4 1/4									
	PC-H.**-5-8S-114.*	114	4										
	PC-H.**-5-8S-127.*	127		5									
	PC-H.**-5-8S-133.*	133		5 1/4									
	PC-H.**-5-9S-133.*	133		5 1/4									
	PC-H.**-5-9S-140.*	140	5										
95	PC-H.**-5-9S-152.*	152		6	270	205	180	91	15	21	M24	35	M24 x 220
	PC-H.**-5-9S-159.*	159		6 1/4									
	PC-H.**-5-9S-165.*	165		6 1/2									
	PC-H.**-5-9S-168.*	168	6										
	PC-H.**-5-10S-168.*	168	6										
105	PC-H.**-5-10S-177.8.*	177.8		7	340	265	240	121	25	21	M30	45	M30 x 300
	PC-H.**-5-10S-193.7.*	193.7		7 5/8									
	PC-H.**-5-10S-216.*	216		8 1/2									
	PC-H.**-5-10S-219.*	219	8										
115	PC-H.**-5-11S-219.*	219	8		520	395	324	166	30	38	M30	50	M30 x 450
	PC-H.**-5-11S-273.*	273	10										
	PC-H.**-5-11S-324.*	324	12										
125	PC-H.**-5-12S-356.*	356	14		680	534	364	186	30	38	M30	50	M30 x 560
	PC-H.**-5-12S-406.*	406	16										

**G6 HEAVY SERIES COVER PLATE WITH ELONGATED WELD PLATE COMPLETE SET  
(HEX BOLTS + COVER PLATE + CLAMP BODY + ELONGATED WELD PLATE)**

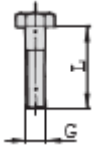
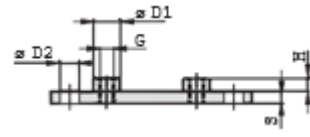
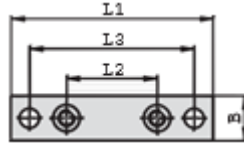


Clamp Body



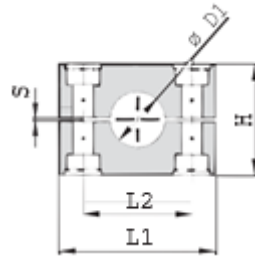
Cover Plate

Series	Order Code	Pipe/ Hose/ Tube O.D.	Nominal Inch Bore	Pipe/ Tube/ Hose Inch O.D.	Clamp Body					Cover Plate				
					L1	L2	H	S	B	L1	L2	S	B	D1
3S	PC-H**-6-3S-006-*	6			55	33	30.5	0.6	30.5	55	33	8	30	11
	PC-H**-6-3S-006.4-*	6.4		1/4										
	PC-H**-6-3S-008-*	8		5/16										
	PC-H**-6-3S-009.5-*	9.5		3/8										
	PC-H**-6-3S-010-*	10	1/8											
	PC-H**-6-3S-012-*	12												
	PC-H**-6-3S-012.7-*	12.7		1/2										
	PC-H**-6-3S-013.5-*	13.5	1/4											
	PC-H**-6-3S-014-*	14												
	PC-H**-6-3S-015-*	15												
	PC-H**-6-3S-016-*	16		5/8										
	PC-H**-6-3S-017.2-*	17.2	3/8											
PC-H**-6-3S-018-*	18													
4S	PC-H**-6-4S-019-*	19		3/4	70	45	46.5	0.6	30.5	70	45	8	30	11
	PC-H**-6-4S-020-*	20												
	PC-H**-6-4S-021.3-*	21.3	1/2											
	PC-H**-6-4S-022-*	22		7/8										
	PC-H**-6-4S-025-*	25												
	PC-H**-6-4S-025.4-*	25.4		1										
	PC-H**-6-4S-026.9-*	26.9	3/4											
	PC-H**-6-4S-028-*	28												
PC-H**-6-4S-030-*	30													
5S	PC-H**-6-5S-030-*	30			85	60	58	0.6	30.5	85	60	8	30	11
	PC-H**-6-5S-032-*	32		1 1/4										
	PC-H**-6-5S-033.7-*	33.7	1											
	PC-H**-6-5S-035-*	35												
	PC-H**-6-5S-038-*	38		1 1/2										
	PC-H**-6-5S-040-*	40												
6S	PC-H**-6-6S-042-*	42	1 1/4		115	90	87	2	45	115	90	10	45	14
	PC-H**-6-6S-038-*	38		1 1/2										
	PC-H**-6-6S-042-*	42	1 1/4											
	PC-H**-6-6S-044.5-*	44.5		1 3/4										
	PC-H**-6-6S-048.3-*	48.3	1 1/2											
	PC-H**-6-6S-050.8-*	50.8		2										
	PC-H**-6-6S-055-*	55												
	PC-H**-6-6S-057-*	57		2 1/4										
	PC-H**-6-6S-060.3-*	60.3	2											
	PC-H**-6-6S-063.5-*	63.5		2 1/2										
7S	PC-H**-6-6S-065-*	65		2 3/4	152	122	120	2	60	152	122	10	60	19
	PC-H**-6-7S-065-*	65												
	PC-H**-6-7S-070-*	70												
	PC-H**-6-7S-073-*	73		2 7/8										
	PC-H**-6-7S-075-*	75												
	PC-H**-6-7S-076.1-*	76.1	2 1/2	3										
	PC-H**-6-7S-080-*	80												
	PC-H**-6-7S-082.5-*	82.5		3 1/4										
8S	PC-H**-6-7S-088.9-*	88.9	3	3 1/2	206	168	168	2	80	206	168	15	80	22
	PC-H**-6-8S-088.9-*	88.9	3	3 1/2										
	PC-H**-6-8S-100-*	100												
	PC-H**-6-8S-102-*	102	3 1/2											
9S	PC-H**-6-8S-108-*	108		4 1/4	251	205	200	3	91	251	205	15	90	26
	PC-H**-6-8S-114-*	114	4											
	PC-H**-6-8S-127-*	127		5										
	PC-H**-6-8S-133-*	133		5 1/4										
	PC-H**-6-9S-133-*	133		5 1/4										
	PC-H**-6-9S-140-*	140	5											
10S	PC-H**-6-9S-152-*	152		6	326	265	270	3	120	320	265	25	120	35
	PC-H**-6-9S-159-*	159		6 1/4										
	PC-H**-6-9S-165-*	165		6 1/2										
	PC-H**-6-9S-168-*	168	6											
11S	PC-H**-6-10S-168-*	168	6		470	395	410	8	162	470	395	30	160	35
	PC-H**-6-10S-177.8-*	177.8		7										
	PC-H**-6-10S-193.7-*	193.7		7 5/8										
12S	PC-H**-6-10S-216-*	216		8 1/2	630	534	530	20	182	630	534	30	180	35
	PC-H**-6-10S-219-*	219	8											
	PC-H**-6-11S-219-*	219	8											
12S	PC-H**-6-11S-273-*	273	10		630	534	530	20	182	630	534	30	180	35
	PC-H**-6-11S-324-*	324	12											
	PC-H**-6-12S-356-*	356	14											
PC-H**-6-12S-406-*	406	16												

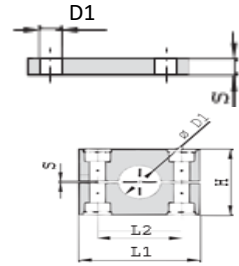
**G6 HEAVY SERIES COVER PLATE WITH ELONGATED WELD PLATE COMPLETE SET  
(HEX BOLTS + COVER PLATE + CLAMP BODY + ELONGATED WELD PLATE)**

**Elongated Weld Plate**
**Hex Bolt**

Series	Order Code	Pipe/ Hose/ Tube O.D.	Nominal Inch Bore	Pipe/ Tube/ Hose Inch O.D.	Elongated Weld Plate									Bolt
					L1	L2	L3	B	S	H	G	D1	D2	
35	PC-H**-6-3S-006.*	6			113	33	85	30	8	8	M10	18	13	M10 x 45
	PC-H**-6-3S-006.4.*	6.4		1/4										
	PC-H**-6-3S-008.*	8		5/16										
	PC-H**-6-3S-009.5.*	9.5		3/8										
	PC-H**-6-3S-010.*	10	1/8											
	PC-H**-6-3S-012.*	12												
	PC-H**-6-3S-012.7.*	12.7		1/2										
	PC-H**-6-3S-013.5.*	13.5	1/4											
	PC-H**-6-3S-014.*	14												
	PC-H**-6-3S-015.*	15												
	PC-H**-6-3S-016.*	16		5/8										
	PC-H**-6-3S-017.2.*	17.2	3/8											
PC-H**-6-3S-018.*	18													
45	PC-H**-6-4S-019.*	19		3/4	125	45	97	30	8	8	M10	18	13	M10 x 60
	PC-H**-6-4S-020.*	20												
	PC-H**-6-4S-021.3.*	21.3	1/2											
	PC-H**-6-4S-022.*	22		7/8										
	PC-H**-6-4S-025.*	25												
	PC-H**-6-4S-025.4.*	25.4		1										
	PC-H**-6-4S-026.9.*	26.9	3/4											
	PC-H**-6-4S-028.*	28												
	PC-H**-6-4S-030.*	30												
	PC-H**-6-4S-030.*	30												
55	PC-H**-6-5S-032.*	32		1 1/4	140	60	112	30	8	8	M10	18	13	M10 x 70
	PC-H**-6-5S-033.7.*	33.7	1											
	PC-H**-6-5S-035.*	35												
	PC-H**-6-5S-038.*	38		1 1/2										
	PC-H**-6-5S-040.*	40												
	PC-H**-6-5S-042.*	42	1 1/4											
	PC-H**-6-5S-038.*	38		1 1/2										
	PC-H**-6-5S-042.*	42	1 1/4											
65	PC-H**-6-6S-044.5.*	44.5		1 3/4	187	90	155	45	10	8	M12	20	16	M12 x 100
	PC-H**-6-6S-048.3.*	48.3	1 1/2											
	PC-H**-6-6S-050.8.*	50.8		2										
	PC-H**-6-6S-055.*	55												
	PC-H**-6-6S-057.*	57		2 1/4										
	PC-H**-6-6S-060.3.*	60.3	2											
	PC-H**-6-6S-063.5.*	63.5		2 1/2										
	PC-H**-6-6S-065.*	65												
	PC-H**-6-6S-070.*	70		2 3/4										
	PC-H**-6-7S-065.*	65												
	PC-H**-6-7S-070.*	70												
	PC-H**-6-7S-073.*	73		2 7/8										
75	PC-H**-6-7S-075.*	75			238	122	198	60	10	12	M16	24	21	M16 x 130
	PC-H**-6-7S-076.1.*	76.1	2 1/2	3										
	PC-H**-6-7S-080.*	80												
	PC-H**-6-7S-082.5.*	82.5		3 1/4										
	PC-H**-6-7S-088.9.*	88.9	3	3 1/2										
	PC-H**-6-8S-088.9.*	88.9	3	3 1/2										
	PC-H**-6-8S-100.*	100												
	PC-H**-6-8S-102.*	102	3 1/2											
85	PC-H**-6-8S-108.*	108		4 1/4	309	168	259	80	15	18	M20	30	26	M20 x 190
	PC-H**-6-8S-114.*	114	4											
	PC-H**-6-8S-127.*	127		5										
	PC-H**-6-8S-133.*	133		5 1/4										
	PC-H**-6-9S-133.*	133		5 1/4										
	PC-H**-6-9S-140.*	140	5											
	PC-H**-6-9S-152.*	152		6										
	PC-H**-6-9S-159.*	159		6 1/4										
95	PC-H**-6-9S-165.*	165		6 1/2	370	205	310	90	15	21	M24	35	31	M24 x 220
	PC-H**-6-9S-168.*	168	6											
	PC-H**-6-10S-168.*	168	6											
	PC-H**-6-10S-177.8.*	177.8		7										
	PC-H**-6-10S-193.7.*	193.7		7 5/8										
	PC-H**-6-10S-216.*	216		8 1/2										
10S	PC-H**-6-10S-219.*	219	8		440	265	380	120	25	21	M30	45	31	M30 x 300
	PC-H**-6-10S-219.*	219	8											
	PC-H**-6-11S-219.*	219	8											
	PC-H**-6-11S-273.*	273	10											
11S	PC-H**-6-11S-324.*	324	12		590	395	530	160	30	38	M30	50	31	M30 x 450
	PC-H**-6-12S-356.*	356	14											
	PC-H**-6-12S-406.*	406	16											
12S					750	534	690	180	30	38	M30	50	31	M30 x 560

**G7 HEAVY SERIES COVER PLATE WITH RAIL NUT AND CAP SCREW COMPLETE SET  
(CLAMP BODY + COVER PLATE + MOUNTING RAIL NUT + CAP SCREW)**

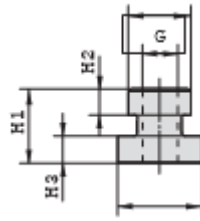
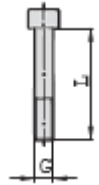
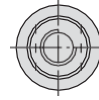


**Clamp Body**

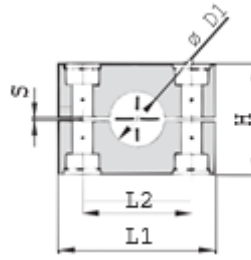
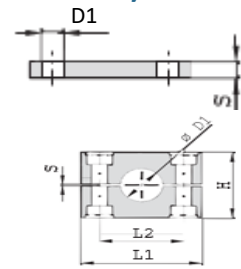


**Cover Plate**

Series	Order Code	Pipe/ Hose/ Tube O.D.	Nominal Inch Bore	Pipe/ Tube/ Hose Inch O.D.	Clamp Body					Cover Plate				
		D1	D1	D1	L1	L2	H	S	B	L1	L2	S	B	D1
35	PC-H**-7-3S-006-*	6			55	33	30.5	0.6	30.5	55	33	8	30	11
	PC-H**-7-3S-006.4-*	6.4		1/4										
	PC-H**-7-3S-008-*	8		5/16										
	PC-H**-7-3S-009.5-*	9.5		3/8										
	PC-H**-7-3S-010-*	10	1/8											
	PC-H**-7-3S-012-*	12												
	PC-H**-7-3S-012.7-*	12.7		1/2										
	PC-H**-7-3S-013.5-*	13.5	1/4											
	PC-H**-7-3S-014-*	14												
	PC-H**-7-3S-015-*	15												
	PC-H**-7-3S-016-*	16		5/8										
	PC-H**-7-3S-017.2-*	17.2	3/8											
PC-H**-7-3S-018-*	18													
PC-H**-7-4S-019-*	19		3/4											
PC-H**-7-4S-020-*	20													
PC-H**-7-4S-021.3-*	21.3	1/2												
PC-H**-7-4S-022-*	22		7/8											
PC-H**-7-4S-025-*	25													
PC-H**-7-4S-025.4-*	25.4		1											
PC-H**-7-4S-026.9-*	26.9	3/4												
PC-H**-7-4S-028-*	28													
PC-H**-7-4S-030-*	30													
PC-H**-7-5S-030-*	30													
PC-H**-7-5S-032-*	32		1 1/4											
PC-H**-7-5S-033.7-*	33.7	1												
PC-H**-7-5S-035-*	35													
PC-H**-7-5S-038-*	38		1 1/2											
PC-H**-7-5S-040-*	40													
PC-H**-7-5S-042-*	42	1 1/4												
PC-H**-7-6S-038-*	38		1 1/2											
PC-H**-7-6S-042-*	42	1 1/4												
PC-H**-7-6S-044.5-*	44.5		1 3/4											
PC-H**-7-6S-048.3-*	48.3	1 1/2												
PC-H**-7-6S-050.8-*	50.8		2											
PC-H**-7-6S-055-*	55													
PC-H**-7-6S-057-*	57		2 1/4											
PC-H**-7-6S-060.3-*	60.3	2												
PC-H**-7-6S-063.5-*	63.5		2 1/2											
PC-H**-7-6S-065-*	65													
PC-H**-7-6S-070-*	70		2 3/4											
PC-H**-7-7S-065-*	65													
PC-H**-7-7S-070-*	70													
PC-H**-7-7S-073-*	73		2 7/8											
PC-H**-7-7S-075-*	75													
PC-H**-7-7S-076.1-*	76.1	2 1/2	3											
PC-H**-7-7S-080-*	80													
PC-H**-7-7S-082.5-*	82.5		3 1/4											
PC-H**-7-7S-088.9-*	88.9	3	3 1/2											
PC-H**-7-8S-088.9-*	88.9	3	3 1/2											
PC-H**-7-8S-100-*	100													
PC-H**-7-8S-102-*	102	3 1/2												
PC-H**-7-8S-108-*	108		4 1/4											
PC-H**-7-8S-114-*	114	4												
PC-H**-7-8S-127-*	127		5											
PC-H**-7-8S-133-*	133		5 1/4											
PC-H**-7-9S-133-*	133		5 1/4											
PC-H**-7-9S-140-*	140	5												
PC-H**-7-9S-152-*	152		6											
PC-H**-7-9S-159-*	159		6 1/4											
PC-H**-7-9S-165-*	165		6 1/2											
PC-H**-7-9S-168-*	168	6												
PC-H**-7-10S-168-*	168	6												
PC-H**-7-10S-177.8-*	177.8		7											
PC-H**-7-10S-193.7-*	193.7		7 5/8											
PC-H**-7-10S-216-*	216		8 1/2											
PC-H**-7-10S-219-*	219	8												
PC-H**-7-11S-219-*	219	8												
PC-H**-7-11S-273-*	273	10												
PC-H**-7-11S-324-*	324	12												
PC-H**-7-12S-356-*	356	14												
PC-H**-7-12S-406-*	406	16												

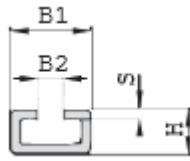
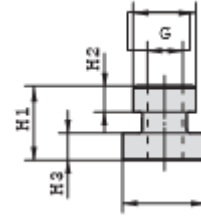
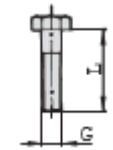
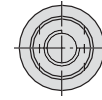
**G7 HEAVY SERIES COVER PLATE WITH RAIL NUT AND CAP SCREW COMPLETE SET  
(CLAMP BODY + COVER PLATE + MOUNTING RAIL NUT + CAP SCREW)**

**Rail Nut**

**Cap Screw**

Series	Order Code	Pipe/ Hose/ Tube O.D.	Nominal Inch Bore	Pipe/ Tube/ Hose Inch O.D.	Mounting Rail Nut				Socket Cap Screw
					H1	H2	H3	Thread G	
					D1	D1	D1		
35	PC-H**-7-3S-006.*	6			21	7,6	7,4	M10	M10 x 30
	PC-H**-7-3S-006.4.*	6.4		1/4					
	PC-H**-7-3S-008.*	8		5/16					
	PC-H**-7-3S-009.5.*	9.5		3/8					
	PC-H**-7-3S-010.*	10	1/8						
	PC-H**-7-3S-012.*	12							
	PC-H**-7-3S-012.7.*	12.7		1/2					
	PC-H**-7-3S-013.5.*	13.5	1/4						
	PC-H**-7-3S-014.*	14							
	PC-H**-7-3S-015.*	15							
	PC-H**-7-3S-016.*	16		5/8					
	PC-H**-7-3S-017.2.*	17.2	3/8						
PC-H**-7-3S-018.*	18								
45	PC-H**-7-4S-019.*	19		3/4	.83	.30	.29	M10	M10 x 40
	PC-H**-7-4S-020.*	20							
	PC-H**-7-4S-021.3.*	21.3	1/2						
	PC-H**-7-4S-022.*	22		7/8					
	PC-H**-7-4S-025.*	25							
	PC-H**-7-4S-025.4.*	25.4		1					
	PC-H**-7-4S-026.9.*	26.9	3/4						
	PC-H**-7-4S-028.*	28							
	PC-H**-7-4S-030.*	30							
	PC-H**-7-4S-030.*	30		1 1/4					
55	PC-H**-7-5S-032.*	32			23	8,8	8,8	M12	M12 x 80
	PC-H**-7-5S-033.7.*	33.7	1						
	PC-H**-7-5S-035.*	35		1 1/2					
	PC-H**-7-5S-038.*	38							
	PC-H**-7-5S-040.*	40							
	PC-H**-7-5S-042.*	42	1 1/4						
65	PC-H**-7-6S-038.*	38		1 1/2	-	-	-	-	-
	PC-H**-7-6S-042.*	42	1 1/4						
	PC-H**-7-6S-044.5.*	44.5		1 3/4					
	PC-H**-7-6S-048.3.*	48.3	1 1/2						
	PC-H**-7-6S-050.8.*	50.8		2					
	PC-H**-7-6S-055.*	55							
	PC-H**-7-6S-057.*	57		2 1/4					
	PC-H**-7-6S-060.3.*	60.3	2						
	PC-H**-7-6S-063.5.*	63.5		2 1/2					
	PC-H**-7-6S-065.*	65							
75	PC-H**-7-7S-065.*	65			-	-	-	-	-
	PC-H**-7-7S-070.*	70							
	PC-H**-7-7S-073.*	73		2 7/8					
	PC-H**-7-7S-075.*	75							
	PC-H**-7-7S-076.1.*	76.1	2 1/2	3					
	PC-H**-7-7S-080.*	80							
	PC-H**-7-7S-082.5.*	82.5		3 1/4					
	PC-H**-7-7S-088.9.*	88.9	3	3 1/2					
85	PC-H**-7-8S-088.9.*	88.9	3	3 1/2	-	-	-	-	-
	PC-H**-7-8S-100.*	100							
	PC-H**-7-8S-102.*	102	3 1/2						
	PC-H**-7-8S-108.*	108		4 1/4					
	PC-H**-7-8S-114.*	114	4						
	PC-H**-7-8S-127.*	127		5					
	PC-H**-7-8S-133.*	133		5 1/4					
95	PC-H**-7-9S-133.*	133		5 1/4	-	-	-	-	-
	PC-H**-7-9S-140.*	140	5						
	PC-H**-7-9S-152.*	152		6					
	PC-H**-7-9S-159.*	159		6 1/4					
	PC-H**-7-9S-165.*	165		6 1/2					
105	PC-H**-7-9S-168.*	168	6		-	-	-	-	-
	PC-H**-7-10S-168.*	168	6						
	PC-H**-7-10S-177.8.*	177.8		7					
	PC-H**-7-10S-193.7.*	193.7		7 5/8					
115	PC-H**-7-10S-216.*	216		8 1/2	-	-	-	-	-
	PC-H**-7-10S-219.*	219	8						
	PC-H**-7-11S-219.*	219	8						
125	PC-H**-7-11S-273.*	273	10		-	-	-	-	-
	PC-H**-7-11S-324.*	324	12						
	PC-H**-7-12S-356.*	356	14						
	PC-H**-7-12S-406.*	406	16		-	-	-	-	-

**G8 HEAVY SERIES COVER PLATE WITH MOUNTING RAIL AND HEX BOLT COMPLETE SET  
(CLAMP BODY + COVER PLATE + MOUNTING RAIL + MOUNTING RAIL NUT + HEX BOLT)**

**Clamp Body**

**Cover Plate**

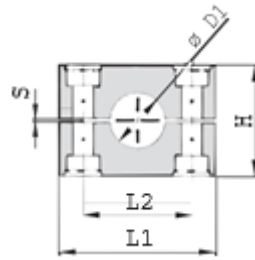
Series	Order Code	Pipe/ Hose/ Tube O.D.	Nominal Inch Bore	Pipe/ Tube/ Hose Inch O.D.	Clamp Body					Cover Plate				
		D1	D1	D1	L1	L2	H	S	B	L1	L2	S	B	D1
35	PC-H**-8-3S-006.*	6												
	PC-H**-8-3S-006.4.*	6.4		1/4										
	PC-H**-8-3S-008.*	8		5/16										
	PC-H**-8-3S-009.5.*	9.5		3/8										
	PC-H**-8-3S-010.*	10	1/8											
	PC-H**-8-3S-012.*	12												
	PC-H**-8-3S-012.7.*	12.7		1/2	55	33	30.5	0.6	30.5	55	33	8	30	11
	PC-H**-8-3S-013.5.*	13.5	1/4											
	PC-H**-8-3S-014.*	14												
	PC-H**-8-3S-015.*	15												
	PC-H**-8-3S-016.*	16		5/8										
PC-H**-8-3S-017.2.*	17.2	3/8												
PC-H**-8-3S-018.*	18													
PC-H**-8-4S-019.*	19		3/4											
PC-H**-8-4S-020.*	20													
PC-H**-8-4S-021.3.*	21.3	1/2												
PC-H**-8-4S-022.*	22		7/8											
PC-H**-8-4S-025.*	25				70	45	46.5	0.6	30.5	70	45	8	30	11
PC-H**-8-4S-025.4.*	25.4		1											
PC-H**-8-4S-026.9.*	26.9	3/4												
PC-H**-8-4S-028.*	28													
PC-H**-8-4S-030.*	30													
PC-H**-8-5S-030.*	30													
PC-H**-8-5S-032.*	32		1 1/4											
PC-H**-8-5S-033.7.*	33.7	1												
PC-H**-8-5S-035.*	35				85	60	58	0.6	30.5	85	60	8	30	11
PC-H**-8-5S-038.*	38		1 1/2											
PC-H**-8-5S-040.*	40													
PC-H**-8-5S-042.*	42	1 1/4												
PC-H**-8-6S-038.*	38		1 1/2											
PC-H**-8-6S-042.*	42	1 1/4												
PC-H**-8-6S-044.5.*	44.5		1 3/4											
PC-H**-8-6S-048.3.*	48.3	1 1/2												
PC-H**-8-6S-050.8.*	50.8		2											
PC-H**-8-6S-055.*	55				115	90	87	2	45	115	90	10	45	14
PC-H**-8-6S-057.*	57		2 1/4											
PC-H**-8-6S-060.3.*	60.3	2												
PC-H**-8-6S-063.5.*	63.5		2 1/2											
PC-H**-8-6S-065.*	65													
PC-H**-8-6S-070.*	70		2 3/4											
PC-H**-8-7S-065.*	65													
PC-H**-8-7S-070.*	70													
PC-H**-8-7S-073.*	73		2 7/8											
PC-H**-8-7S-075.*	75													
PC-H**-8-7S-076.1.*	76.1	2 1/2	3		152	122	120	2	60	152	122	10	60	19
PC-H**-8-7S-080.*	80													
PC-H**-8-7S-082.5.*	82.5		3 1/4											
PC-H**-8-7S-088.9.*	88.9	3	3 1/2											
PC-H**-8-8S-088.9.*	88.9	3	3 1/2											
PC-H**-8-8S-100.*	100													
PC-H**-8-8S-102.*	102	3 1/2												
PC-H**-8-8S-108.*	108		4 1/4		206	168	168	2	80	206	168	15	80	22
PC-H**-8-8S-114.*	114	4												
PC-H**-8-8S-127.*	127		5											
PC-H**-8-8S-133.*	133		5 1/4											
PC-H**-8-9S-133.*	133		5 1/4											
PC-H**-8-9S-140.*	140	5												
PC-H**-8-9S-152.*	152		6											
PC-H**-8-9S-159.*	159		6 1/4		251	205	200	3	91	251	205	15	90	26
PC-H**-8-9S-165.*	165		6 1/2											
PC-H**-8-9S-168.*	168	6												
PC-H**-8-10S-168.*	168	6												
PC-H**-8-10S-177.8.*	177.8		7											
PC-H**-8-10S-193.7.*	193.7		7 5/8		326	265	270	3	120	320	265	25	120	35
PC-H**-8-10S-216.*	216		8 1/2											
PC-H**-8-10S-219.*	219	8												
PC-H**-8-11S-219.*	219	8												
PC-H**-8-11S-273.*	273	10			470	395	410	8	162	470	395	30	160	35
PC-H**-8-11S-324.*	324	12												
PC-H**-8-12S-356.*	356	14												
PC-H**-8-12S-406.*	406	16			630	534	530	20	182	630	534	30	180	35



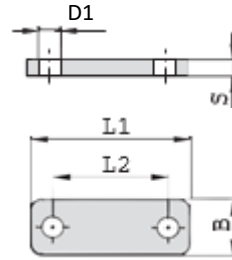
**G8 HEAVY SERIES COVER PLATE WITH MOUNTING RAIL AND HEX BOLT COMPLETE SET  
(CLAMP BODY + COVER PLATE + MOUNTING RAIL + MOUNTING RAIL NUT + HEX BOLT)**

**Mounting Rail**

**Rail Nut**

**Hex Bolt**

Series	Order Code	Pipe/ Hose/ Tube O.D.	Nominal Inch Bore	Pipe/ Tube/ Hose Inch O.D.	Mounting Rail				Rail Nut				Hex Bolt
					B1	B2	H	S	H1	H2	H3	Thread G	
3S	PC-H**-8-3S-006.*	6		D1	40	13	22	5	21	7,6	7,4	M10	M10 x 45
	PC-H**-8-3S-006.4.*	6.4		1/4									
	PC-H**-8-3S-008.*	8		5/16									
	PC-H**-8-3S-009.5.*	9.5		3/8									
	PC-H**-8-3S-010.*	10	1/8										
	PC-H**-8-3S-012.*	12											
	PC-H**-8-3S-012.7.*	12.7		1/2									
	PC-H**-8-3S-013.5.*	13.5	1/4										
	PC-H**-8-3S-014.*	14											
	PC-H**-8-3S-015.*	15											
	PC-H**-8-3S-016.*	16		5/8									
	PC-H**-8-3S-017.2.*	17.2	3/8										
PC-H**-8-3S-018.*	18												
4S	PC-H**-8-4S-019.*	19		3/4	1.57	.51	.86	.19	.83	.30	.29	M12	M12 x 100
	PC-H**-8-4S-020.*	20											
	PC-H**-8-4S-021.3.*	21.3	1/2										
	PC-H**-8-4S-022.*	22		7/8									
	PC-H**-8-4S-025.*	25											
	PC-H**-8-4S-025.4.*	25.4		1									
	PC-H**-8-4S-026.9.*	26.9	3/4										
	PC-H**-8-4S-028.*	28											
5S	PC-H**-8-5S-030.*	30			1.57	.51	.86	.19	.83	.30	.29	M12	M12 x 100
	PC-H**-8-5S-032.*	32		1 1/4									
	PC-H**-8-5S-033.7.*	33.7	1										
	PC-H**-8-5S-035.*	35											
	PC-H**-8-5S-038.*	38		1 1/2									
	PC-H**-8-5S-040.*	40											
	PC-H**-8-5S-042.*	42	1 1/4										
	PC-H**-8-5S-042.3.*	42.3		1 1/2									
6S	PC-H**-8-6S-038.*	38		1 1/2	1.57	.51	.86	.19	.83	.30	.29	M12	M12 x 100
	PC-H**-8-6S-042.*	42	1 1/4										
	PC-H**-8-6S-044.5.*	44.5		1 3/4									
	PC-H**-8-6S-048.3.*	48.3	1 1/2										
	PC-H**-8-6S-050.8.*	50.8		2									
	PC-H**-8-6S-055.*	55											
	PC-H**-8-6S-057.*	57		2 1/4									
	PC-H**-8-6S-060.3.*	60.3	2										
7S	PC-H**-8-7S-065.*	65			1.57	.51	.86	.19	.83	.30	.29	M12	M12 x 100
	PC-H**-8-7S-070.*	70											
	PC-H**-8-7S-073.*	73		2 7/8									
	PC-H**-8-7S-075.*	75											
	PC-H**-8-7S-076.1.*	76.1	2 1/2	3									
	PC-H**-8-7S-080.*	80											
	PC-H**-8-7S-082.5.*	82.5		3 1/4									
	PC-H**-8-7S-088.9.*	88.9	3	3 1/2									
8S	PC-H**-8-8S-088.9.*	88.9	3	3 1/2	1.57	.51	.86	.19	.83	.30	.29	M12	M12 x 100
	PC-H**-8-8S-100.*	100											
	PC-H**-8-8S-102.*	102	3 1/2										
	PC-H**-8-8S-108.*	108		4 1/4									
	PC-H**-8-8S-114.*	114	4										
	PC-H**-8-8S-127.*	127		5									
	PC-H**-8-8S-133.*	133		5 1/4									
	PC-H**-8-8S-133.*	133		5 1/4									
9S	PC-H**-8-9S-133.*	133		5 1/4	1.57	.51	.86	.19	.83	.30	.29	M12	M12 x 100
	PC-H**-8-9S-140.*	140	5										
	PC-H**-8-9S-152.*	152		6									
	PC-H**-8-9S-159.*	159		6 1/4									
	PC-H**-8-9S-165.*	165		6 1/2									
	PC-H**-8-9S-168.*	168	6										
10S	PC-H**-8-10S-168.*	168	6		1.57	.51	.86	.19	.83	.30	.29	M12	M12 x 100
	PC-H**-8-10S-177.8.*	177.8		7									
	PC-H**-8-10S-193.7.*	193.7		7 5/8									
	PC-H**-8-10S-216.*	216		8 1/2									
	PC-H**-8-10S-219.*	219	8										
11S	PC-H**-8-11S-219.*	219	8		1.57	.51	.86	.19	.83	.30	.29	M12	M12 x 100
	PC-H**-8-11S-273.*	273	10										
	PC-H**-8-11S-324.*	324	12										
12S	PC-H**-8-12S-356.*	356	14		1.57	.51	.86	.19	.83	.30	.29	M12	M12 x 100
	PC-H**-8-12S-406.*	406	16										

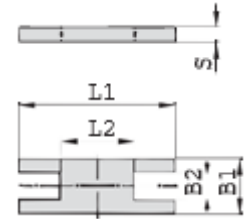
**G9 HEAVY SERIES DOUBLE/ TRIPLE STACK COMPLETE SET (2/3 SETS IN A VERTICAL ROW)  
(CLAMP BODY + COVER PLATE + BASE PLATE + LOCKING PLATE + STACKING BOLT + HEX BOLT)**



Clamp Body

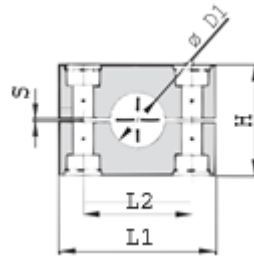
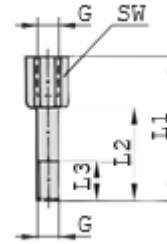
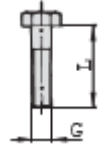


Cover Plate

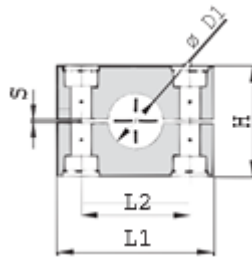
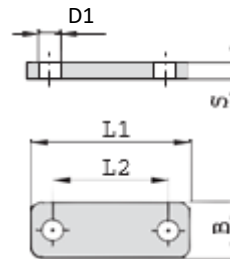
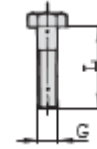


Safety Locking Plate

Series	Order Code	Pipe/ Hose/ Tube O.D.	Nominal Inch Bore	Pipe/ Tube/ Hose Inch O.D.	Clamp Body					Cover Plate					Locking Plate					
					L1	L2	H	S	B	L1	L2	S	B	D1	L1	L2	B1	B2	S	
		D1	D1	D1																
3S	PC-H**-9-3S-006.*	6																		
	PC-H**-9-3S-006.4.*	6.4		1/4																
	PC-H**-9-3S-008.*	8		5/16																
	PC-H**-9-3S-009.5.*	9.5		3/8																
	PC-H**-9-3S-010.*	10	1/8																	
	PC-H**-9-3S-012.*	12																		
	PC-H**-9-3S-012.7.*	12.7		1/2		55	33	30.5	0.6	30.5	55	33	8	30	11	57	13	30	15.2	8
	PC-H**-9-3S-013.5.*	13.5	1/4																	
	PC-H**-9-3S-014.*	14																		
	PC-H**-9-3S-015.*	15																		
PC-H**-9-3S-016.*	16		5/8																	
PC-H**-9-3S-017.2.*	17.2	3/8																		
PC-H**-9-3S-018.*	18																			
PC-H**-9-4S-019.*	19		3/4																	
PC-H**-9-4S-020.*	20																			
PC-H**-9-4S-021.3.*	21.3	1/2																		
PC-H**-9-4S-022.*	22		7/8																	
PC-H**-9-4S-025.*	25				70	45	46.5	0.6	30.5	70	45	8	30	11	70	26	30	15.2	8	
PC-H**-9-4S-025.4.*	25.4		1																	
PC-H**-9-4S-026.9.*	26.9	3/4																		
PC-H**-9-4S-028.*	28																			
PC-H**-9-4S-030.*	30																			
PC-H**-9-5S-030.*	30																			
PC-H**-9-5S-032.*	32		1 1/4																	
PC-H**-9-5S-033.7.*	33.7	1																		
PC-H**-9-5S-035.*	35				85	60	58	0.6	30.5	85	60	8	30	11	85	40	30	15.2	8	
PC-H**-9-5S-038.*	38		1 1/2																	
PC-H**-9-5S-040.*	40																			
PC-H**-9-5S-042.*	42	1 1/4																		
PC-H**-9-6S-038.*	38		1 1/2																	
PC-H**-9-6S-042.*	42	1 1/4																		
PC-H**-9-6S-044.5.*	44.5		1 3/4																	
PC-H**-9-6S-048.3.*	48.3	1 1/2																		
PC-H**-9-6S-050.8.*	50.8		2																	
PC-H**-9-6S-055.*	55				115	90	87	2	45	115	90	10	45	14	116	68	45	17.2	10	
PC-H**-9-6S-057.*	57		2 1/4																	
PC-H**-9-6S-060.3.*	60.3	2																		
PC-H**-9-6S-063.5.*	63.5		2 1/2																	
PC-H**-9-6S-065.*	65																			
PC-H**-9-6S-070.*	70		2 3/4																	
PC-H**-9-7S-065.*	65																			
PC-H**-9-7S-070.*	70																			
PC-H**-9-7S-073.*	73		2 7/8																	
PC-H**-9-7S-075.*	75																			
PC-H**-9-7S-076.1.*	76.1	2 1/2	3		152	122	120	2	60	152	122	10	60	19	153	96	60	22	10	
PC-H**-9-7S-080.*	80																			
PC-H**-9-7S-082.5.*	82.5		3 1/4																	
PC-H**-9-7S-088.9.*	88.9	3	3 1/2																	
PC-H**-9-8S-088.9.*	88.9	3	3 1/2																	
PC-H**-9-8S-100.*	100																			
PC-H**-9-8S-102.*	102	3 1/2																		
PC-H**-9-8S-108.*	108		4 1/4		206	168	168	2	80	206	168	15	80	22	206	130	80	28	15	
PC-H**-9-8S-114.*	114	4																		
PC-H**-9-8S-127.*	127		5																	
PC-H**-9-8S-133.*	133		5 1/4																	
PC-H**-9-9S-133.*	133		5 1/4																	
PC-H**-9-9S-140.*	140	5																		
PC-H**-9-9S-152.*	152		6																	
PC-H**-9-9S-159.*	159		6 1/4		251	205	200	3	91	251	205	15	90	26	251	166	90	31	15	
PC-H**-9-9S-165.*	165		6 1/2																	
PC-H**-9-9S-168.*	168	6																		
PC-H**-9-10S-168.*	168	6																		
PC-H**-9-10S-177.8.*	177.8		7																	
PC-H**-9-10S-193.7.*	193.7		7 5/8		326	265	270	3	120	320	265	25	120	35	317	205	120	49	25	
PC-H**-9-10S-216.*	216		8 1/2																	
PC-H**-9-10S-219.*	219	8																		

**G9 HEAVY SERIES DOUBLE/ TRIPLE STACK COMPLETE SET (2/3 SETS IN A VERTICAL ROW)  
 (CLAMP BODY + COVER PLATE + BASE PLATE + LOCKING PLATE + STACKING BOLT + HEX BOLT)**

**Clamp Body**

**Stacking Bolt**

**Hex Bolt**

Series	Order Code	Pipe/ Hose/ Tube O.D.	Nominal Inch Bore	Pipe/ Tube/ Hose Inch O.D.	Clamp Body							Stacking Bolt					Bolt
					L1	L2	B	S	H	G	D1	G	L1	L2	L3	SW	
		D1	D1	D1													
35	PC-H.**-9-3S-006.*	6			74	33	30	8	8	M10	18	M10	49	25	15	15	M10 x 45
	PC-H.**-9-3S-006.4.*	6.4		1/4													
	PC-H.**-9-3S-008.*	8		5/16													
	PC-H.**-9-3S-009.5.*	9.5		3/8													
	PC-H.**-9-3S-010.*	10	1/8														
	PC-H.**-9-3S-012.*	12															
	PC-H.**-9-3S-012.7.*	12.7		1/2													
	PC-H.**-9-3S-013.5.*	13.5	1/4														
	PC-H.**-9-3S-014.*	14															
	PC-H.**-9-3S-015.*	15															
	PC-H.**-9-3S-016.*	16		5/8													
	PC-H.**-9-3S-017.2.*	17.2	3/8														
PC-H.**-9-3S-018.*	18																
45	PC-H.**-9-4S-019.*	19		3/4	86	45	30	8	8	M10	18	M10	65	40	15	15	M10 x 60
	PC-H.**-9-4S-020.*	20															
	PC-H.**-9-4S-021.3.*	21.3	1/2														
	PC-H.**-9-4S-022.*	22		7/8													
	PC-H.**-9-4S-025.*	25															
	PC-H.**-9-4S-025.4.*	25.4		1													
	PC-H.**-9-4S-026.9.*	26.9	3/4														
	PC-H.**-9-4S-028.*	28															
PC-H.**-9-4S-030.*	30																
55	PC-H.**-9-5S-030.*	30			100	60	30	8	8	M10	18	M10	77	51	15	15	M10 x 70
	PC-H.**-9-5S-032.*	32		1 1/4													
	PC-H.**-9-5S-033.7.*	33.7	1														
	PC-H.**-9-5S-035.*	35															
	PC-H.**-9-5S-038.*	38		1 1/2													
	PC-H.**-9-5S-040.*	40															
PC-H.**-9-5S-042.*	42	1 1/4															
65	PC-H.**-9-6S-038.*	38		1 1/2	140	90	45	10	8	M12	20	M12	110	82	18	17	M12 x 100
	PC-H.**-9-6S-042.*	42	1 1/4														
	PC-H.**-9-6S-044.5.*	44.5		1 3/4													
	PC-H.**-9-6S-048.3.*	48.3	1 1/2														
	PC-H.**-9-6S-050.8.*	50.8		2													
	PC-H.**-9-6S-055.*	55															
	PC-H.**-9-6S-057.*	57		2 1/4													
	PC-H.**-9-6S-060.3.*	60.3	2														
	PC-H.**-9-6S-063.5.*	63.5		2 1/2													
	PC-H.**-9-6S-065.*	65															
PC-H.**-9-6S-070.*	70		2 3/4														
75	PC-H.**-9-7S-065.*	65			180	122	60	10	12	M16	24	M16	144	110	24	21	M16 x 130
	PC-H.**-9-7S-070.*	70															
	PC-H.**-9-7S-073.*	73		2 7/8													
	PC-H.**-9-7S-075.*	75															
	PC-H.**-9-7S-076.1.*	76.1	2 1/2	3													
	PC-H.**-9-7S-080.*	80															
	PC-H.**-9-7S-082.5.*	82.5		3 1/4													
85	PC-H.**-9-7S-088.9.*	88.9	3	3 1/2	226	168	80	15	18	M20	30	M20	200	150	30	27	M20 x 190
	PC-H.**-9-8S-088.9.*	88.9	3	3 1/2													
	PC-H.**-9-8S-100.*	100															
	PC-H.**-9-8S-102.*	102	3 1/2														
	PC-H.**-9-8S-108.*	108		4 1/4													
	PC-H.**-9-8S-114.*	114	4														
	PC-H.**-9-8S-127.*	127		5													
	PC-H.**-9-8S-133.*	133		5 1/4													
95	PC-H.**-9-9S-133.*	133		5 1/4	270	205	90	15	21	M24	35	M24	240	180	50	30	M24 x 220
	PC-H.**-9-9S-140.*	140	5														
	PC-H.**-9-9S-152.*	152		6													
	PC-H.**-9-9S-159.*	159		6 1/4													
	PC-H.**-9-9S-165.*	165		6 1/2													
10S	PC-H.**-9-9S-168.*	168	6		340	265	120	25	21	M30	45	M30	331	256	62	46	M30 x 300
	PC-H.**-9-10S-168.*	168	6														
	PC-H.**-9-10S-177.8.*	177.8		7													
	PC-H.**-9-10S-193.7.*	193.7		7 5/8													
	PC-H.**-9-10S-216.*	216		8 1/2													
PC-H.**-9-10S-219.*	219	8															

**G10 HEAVY SERIES COVER PLATE WITH LONG HEX BOLTS SETS  
(CLAMP BODY + COVER PLATE + LONG HEX BOLTS + NUTS)**

**Clamp Body**

**Cover Plate**

**Hex Bolt**

Series	Order Code	Pipe/ Hose/ Tube O.D.	Nominal Inch Bore	Pipe/ Tube/ Hose Inch O.D.	Clamp Body					Cover Plate					Long Hex Bolts	Nuts
					L1	L2	H	S	B	L1	L2	S	B	D1		
		D1	D1	D1												
3S	PC-H**-10-3S-006-*	6														
	PC-H**-10-3S-006.4-*	6.4		1/4												
	PC-H**-10-3S-008-*	8		5/16												
	PC-H**-10-3S-009.5-*	9.5		3/8												
	PC-H**-10-3S-010-*	10	1/8													
	PC-H**-10-3S-012-*	12														
	PC-H**-10-3S-012.7-*	12.7		1/2												
	PC-H**-10-3S-013.5-*	13.5	1/4													
	PC-H**-10-3S-014-*	14														
	PC-H**-10-3S-015-*	15														
	PC-H**-10-3S-016-*	16		5/8												
	PC-H**-10-3S-017.2-*	17.2	3/8													
PC-H**-10-3S-018-*	18															
4S	PC-H**-10-4S-019-*	19		3/4												
	PC-H**-10-4S-020-*	20														
	PC-H**-10-4S-021.3-*	21.3	1/2													
	PC-H**-10-4S-022-*	22		7/8												
	PC-H**-10-4S-025-*	25														
	PC-H**-10-4S-025.4-*	25.4		1												
	PC-H**-10-4S-026.9-*	26.9	3/4													
	PC-H**-10-4S-028-*	28														
	PC-H**-10-4S-030-*	30														
	PC-H**-10-5S-030-*	30														
5S	PC-H**-10-5S-032-*	32		1 1/4												
	PC-H**-10-5S-033.7-*	33.7	1													
	PC-H**-10-5S-035-*	35														
	PC-H**-10-5S-038-*	38		1 1/2												
	PC-H**-10-5S-040-*	40														
	PC-H**-10-5S-042-*	42	1 1/4													
	PC-H**-10-6S-038-*	38		1 1/2												
6S	PC-H**-10-6S-042-*	42	1 1/4													
	PC-H**-10-6S-044.5-*	44.5		1 3/4												
	PC-H**-10-6S-048.3-*	48.3	1 1/2													
	PC-H**-10-6S-050.8-*	50.8		2												
	PC-H**-10-6S-055-*	55														
	PC-H**-10-6S-057-*	57		2 1/4												
	PC-H**-10-6S-060.3-*	60.3	2													
	PC-H**-10-6S-063.5-*	63.5		2 1/2												
	PC-H**-10-6S-065-*	65														
	PC-H**-10-6S-070-*	70		2 3/4												
7S	PC-H**-10-7S-065-*	65														
	PC-H**-10-7S-070-*	70														
	PC-H**-10-7S-073-*	73		2 7/8												
	PC-H**-10-7S-075-*	75														
	PC-H**-10-7S-076.1-*	76.1	2 1/2	3												
	PC-H**-10-7S-080-*	80														
	PC-H**-10-7S-082.5-*	82.5		3 1/4												
	PC-H**-10-7S-088.9-*	88.9	3	3 1/2												
8S	PC-H**-10-8S-088.9-*	88.9	3	3 1/2												
	PC-H**-10-8S-100-*	100														
	PC-H**-10-8S-102-*	102	3 1/2													
	PC-H**-10-8S-108-*	108		4 1/4												
	PC-H**-10-8S-114-*	114	4													
	PC-H**-10-8S-127-*	127		5												
	PC-H**-10-8S-133-*	133		5 1/4												
9S	PC-H**-10-9S-133-*	133		5 1/4												
	PC-H**-10-9S-140-*	140	5													
	PC-H**-10-9S-152-*	152		6												
	PC-H**-10-9S-159-*	159		6 1/4												
	PC-H**-10-9S-165-*	165		6 1/2												
	PC-H**-10-9S-168-*	168	6													
10S	PC-H**-10-10S-168-*	168	6													
	PC-H**-10-10S-177.8-*	177.8		7												
	PC-H**-10-10S-193.7-*	193.7		7 5/8												
	PC-H**-10-10S-216-*	216		8 1/2												
	PC-H**-10-10S-219-*	219	8													



## TUBE CLAMPS HEAVY SERIES

### TUBECLO

#### Conditions of Use of Catalogue:

The information in the catalogue are not binding and in order to improve distribution, Tubeclo reserves the right to make any change including size and pressure ratings considered necessary at any time and without prior notice.

According to the copyright and the civil law, any reproduction (also partial) of figures and texts of this catalogue by means of electronic, mechanical, photocopies, microfilms, recordings or other is forbidden without Tubeclo's authorization.

Catalogue Version: 2023