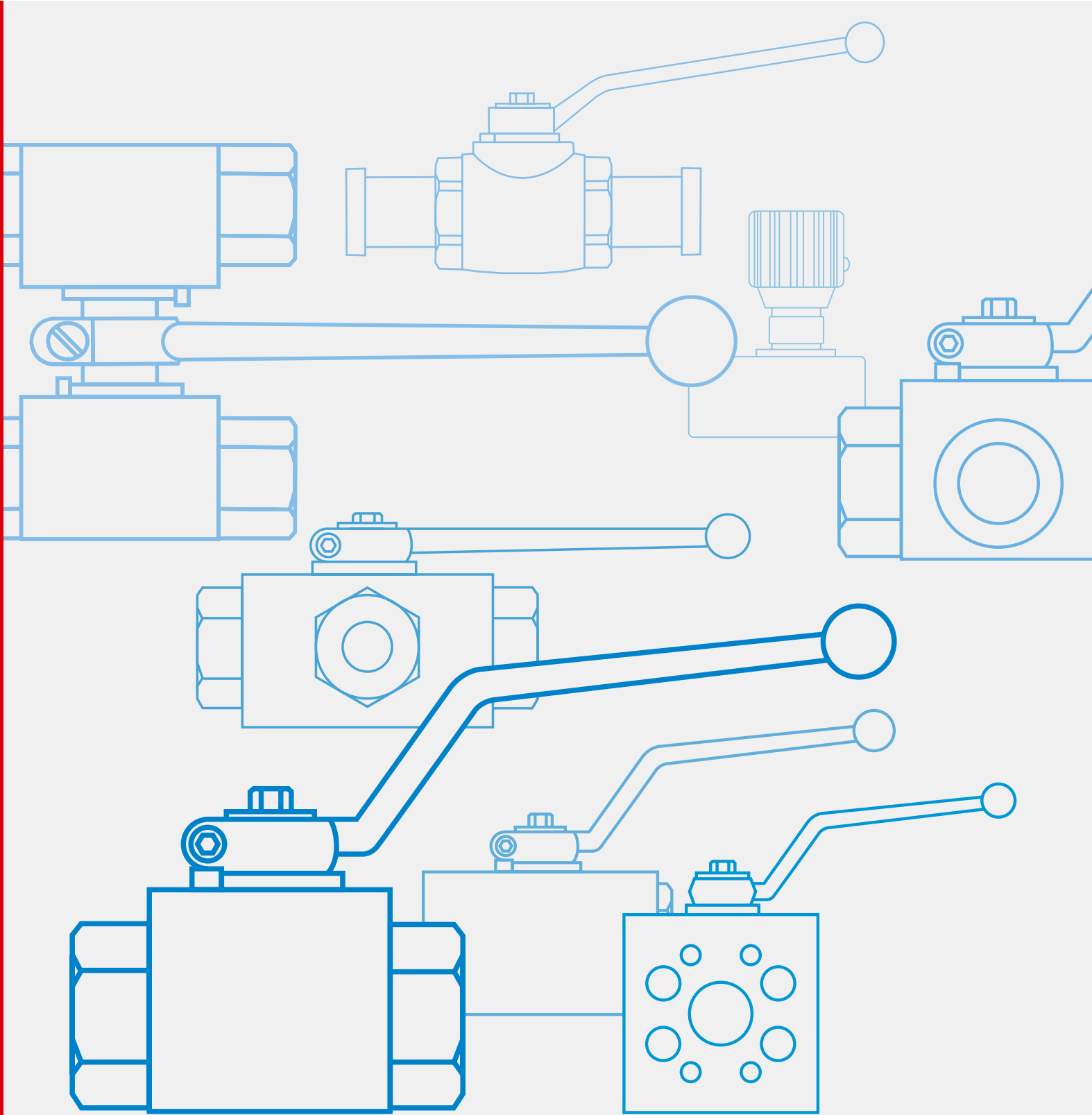


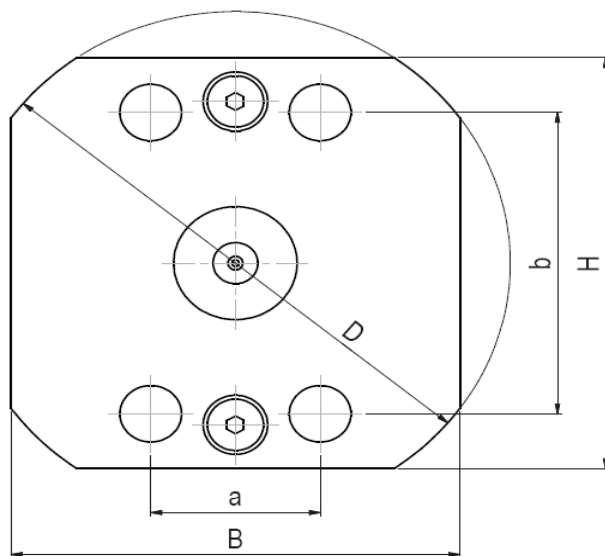
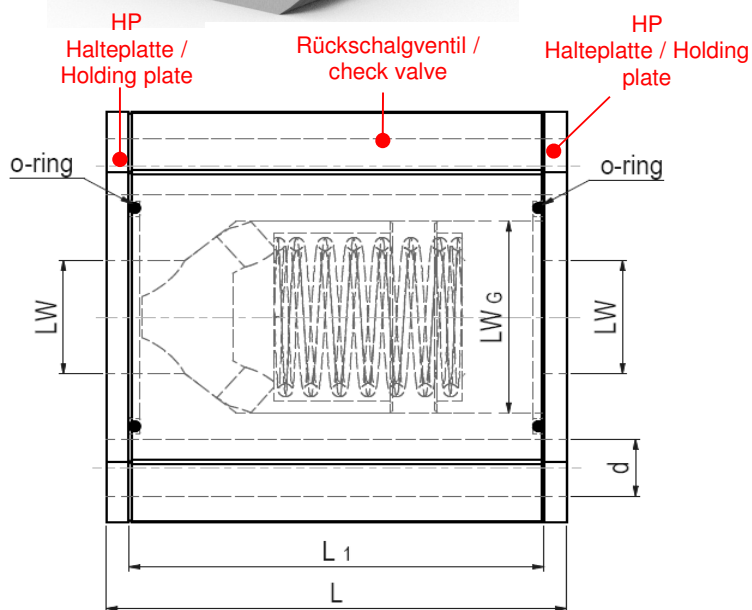
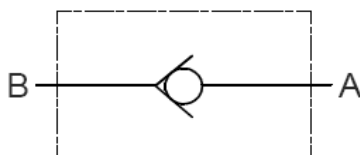
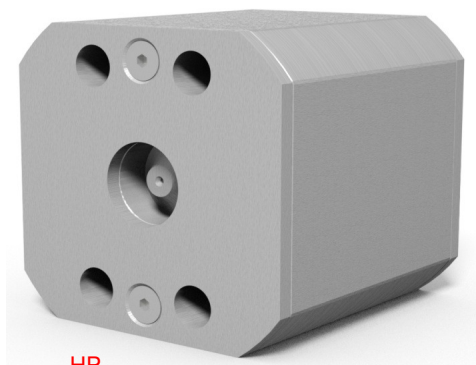


**MHA ZENTGRAF**  
FlowControl Technology



# Rückschlagventil mit SAE-Anschluss, RVZ-SAE

## Check valve with SAE-adapter, RVZ-SAE



### ISO 6162-1 21 MPa

### ISO 6162-1 3000 psi

Bitte Druckstufen der Anschlussflansche beachten !  
Please note the pressure ratings of the connection flanges !

| Type | Anschluss connection | DN | LW   | LW <sub>G</sub> | L   | L <sub>1</sub> | L <sub>2</sub> | D   | B   | H   | a    | b    | d  | p <sub>Ö</sub> [Mpa] |
|------|----------------------|----|------|-----------------|-----|----------------|----------------|-----|-----|-----|------|------|----|----------------------|
| RVZ  | SAE210               | 15 | 11   | 17,5            | 46  | 38             | 4              | 70  | 45  | 60  | 17,5 | 38,1 | 9  | 0,2                  |
| RVZ  | SAE210               | 20 | 14,5 | 23              | 54  | 46             | 4              | 82  | 55  | 70  | 22,3 | 47,6 | 11 | 0,2                  |
| RVZ  | SAE210               | 25 | 17   | 28              | 61  | 53             | 4              | 97  | 70  | 80  | 26,2 | 52,4 | 11 | 0,2                  |
| RVZ  | SAE210               | 32 | 22   | 37,3            | 82  | 74             | 4              | 98  | 80  | 80  | 30,2 | 58,7 | 11 | 0,2                  |
| RVZ  | SAE210               | 40 | 28   | 43              | 89  | 81             | 4              | 118 | 90  | 95  | 35,7 | 69,9 | 13 | 0,2                  |
| RVZ  | SAE210               | 50 | 37   | 55              | 105 | 97             | 4              | 137 | 100 | 110 | 42,9 | 77,8 | 13 | 0,2                  |

### ISO 6162-2 42 MPa

### ISO 6162-2 6000 psi

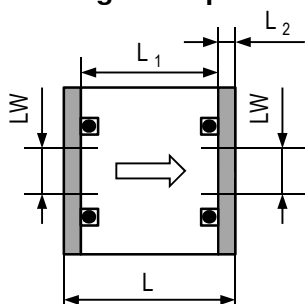
Bitte Druckstufen der Anschlussflansche beachten !  
Please note the pressure ratings of the connection flanges !

| Type | Anschluss connection | DN | LW   | LW <sub>G</sub> | L   | L <sub>1</sub> | L <sub>2</sub> | D   | B   | H   | a    | b    | d  | p <sub>Ö</sub> [Mpa] |
|------|----------------------|----|------|-----------------|-----|----------------|----------------|-----|-----|-----|------|------|----|----------------------|
| RVZ  | SAE420               | 15 | 11   | 17,5            | 46  | 38             | 4              | 73  | 50  | 60  | 18,2 | 40,5 | 9  | 0,2                  |
| RVZ  | SAE420               | 20 | 14,5 | 23              | 54  | 46             | 4              | 87  | 60  | 70  | 23,8 | 50,8 | 11 | 0,2                  |
| RVZ  | SAE420               | 25 | 17   | 28              | 61  | 53             | 4              | 98  | 70  | 80  | 27,8 | 57,2 | 13 | 0,2                  |
| RVZ  | SAE420               | 32 | 22   | 37,3            | 84  | 74             | 5              | 115 | 80  | 95  | 31,8 | 66,6 | 13 | 0,2                  |
| RVZ  | SAE420               | 40 | 28   | 43              | 91  | 81             | 5              | 136 | 95  | 115 | 36,5 | 79,3 | 17 | 0,2                  |
| RVZ  | SAE420               | 50 | 37   | 55              | 109 | 97             | 6              | 165 | 115 | 135 | 44,5 | 96,8 | 22 | 0,2                  |

# Rückschlagventil mit SAE-Anschluss, RVZ-SAE

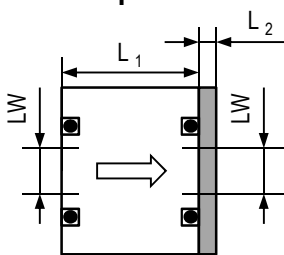
## Check valve with SAE-adapter, RVZ-SAE

### mögliche Optionen / realizable options:



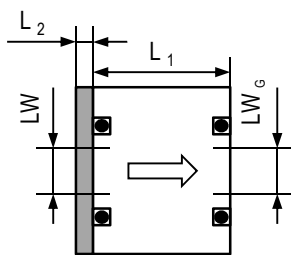
#### OPTION A

ohne Dichtung  
without seals



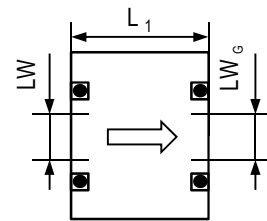
#### OPTION B

eingangsseitige Dichtung  
inlet side sealed



#### OPTION C

ausgangsseitige Dichtung  
outlet side sealed



#### OPTION D

beidseitige Dichtung  
seals on both sides

#### OPTION E (auf Anfrage / on request)

mit Gewindebohrungen  
with threaded holes

### Lieferumfang / scope of delivery:

Rückschlagventil + O-Ringe + 2 Halteplatten / check valve + 2 o-rings + 2 holding plates

**Adapterplatte muss separat bestellt werden / Adapter plate has to be ordered separately**

**Standard-Öffnungsdruck 0,2 MPa, weitere Öffnungsdrücke auf Anfrage / standard cracking pressure 0,2 Mpa, further cracking pressures on request**

| Werkstoffe / Materials | 28p8            |  |  |  |
|------------------------|-----------------|--|--|--|
| Gehäuse / Body         | Stahl / Steel   |  |  |  |
| Kegel / Poppet         | Stahl / Steel   |  |  |  |
| Dichtung / Seat        | Polyurethan     |  |  |  |
| O-Ringe / O-rings      | FPM             |  |  |  |
| Tmin / Tmax            | -20 °C / 100 °C |  |  |  |

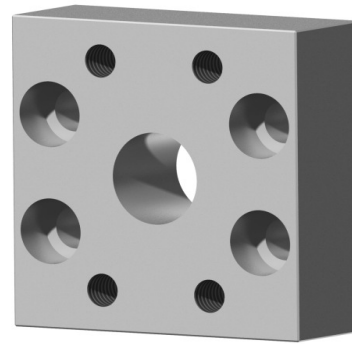
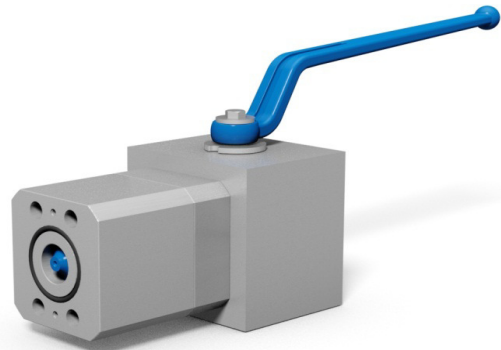
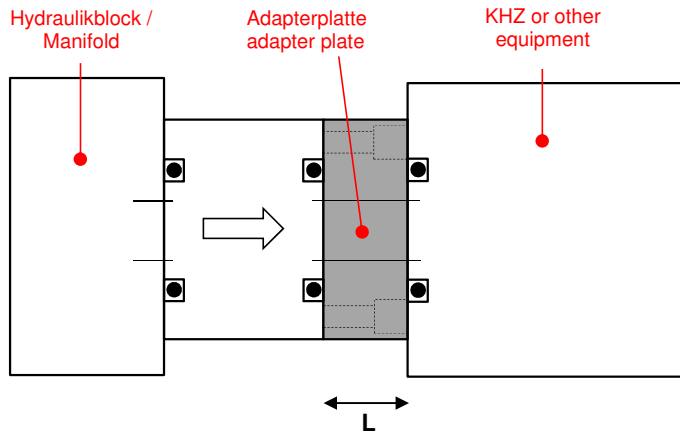
| Gew <sub>kg</sub><br>Weight <sub>kg</sub> | PN<br>[MPa] | Best.nr.<br>Order no. |  |  |  |
|---|-------------|-----------------------|--|--|--|
|   | 21          | 55424                 |  |  |  |
|   | 21          | 55425                 |  |  |  |
|   | 21          | 55394                 |  |  |  |
|   | 21          | 55395                 |  |  |  |
|   | 21          | 54350                 |  |  |  |
|   | 21          | 55426                 |  |  |  |

| Gew <sub>kg</sub><br>Weight <sub>kg</sub> | PN<br>[MPa] | Best.nr.<br>Order no. |  |  |  |
|---|-------------|-----------------------|--|--|--|
|   | 42          | 55732                 |  |  |  |
|   | 42          | 55731                 |  |  |  |
|   | 42          | 55721                 |  |  |  |
|   | 42          | 55716                 |  |  |  |
|   | 42          | 55022                 |  |  |  |
|   | 42          | 55726                 |  |  |  |

### mit Adapterplatte / with adapter plate

Die Adapterplatte ermöglicht zum Beispiel die Kombination mit einem KHZ-SAE. Durch Verwendung der Adapterplatte kann der KHZ bzw. das Ausrüstungsteil zur Wartung entfernt werden, ohne dass das RVZ demontiert wird.

The adapter plate allows, for example, the combination with a KHZ. With the adapter plate it is possible to do maintenance at the KHZ (or other equipment) without removing the RVZ.



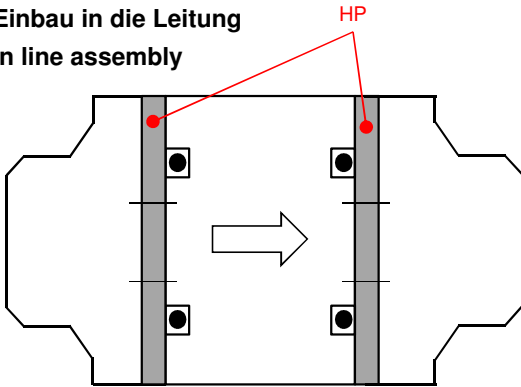
ISO 6162-1 21 MPa  
ISO 6162-1 3000 psi

| Werkstoffe / Materials |               |
|------------------------|---------------|
| Gehäuse / Body         | Stahl / Steel |

| Anschluss connection | DN | L                        | Gew <sub>kg</sub><br>Weight <sub>kg</sub> | PN<br>[MPa] | Best.nr.<br>Order no. |
|----------------------|----|--------------------------|---|-------------|-----------------------|
| SAE210               | 15 | auf Anfrage / on request |   | 21          |                       |
| SAE210               | 20 | 29                       |   | 21          | 55443                 |
| SAE210               | 25 | 29                       |   | 21          | 55444                 |
| SAE210               | 32 | 33                       |   | 21          | 55445                 |
| SAE210               | 40 | 33                       |   | 21          | 55446                 |
| SAE210               | 50 | 33                       |   | 21          | 55447                 |

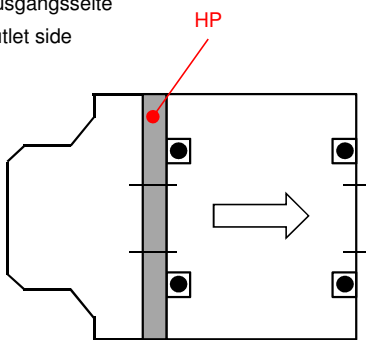
Weitere Anwendungsfälle / further applications

Einbau in die Leitung  
in line assembly

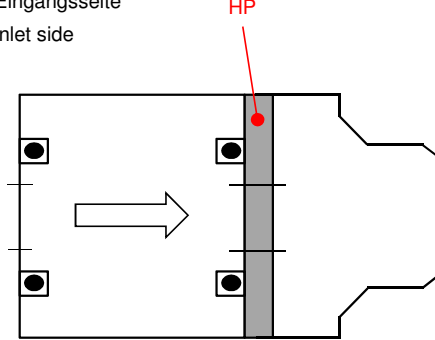


einseitig angeflanscht  
side flanged assembly

Ausgangsseite  
outlet side



Eingangsseite  
inlet side

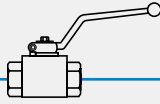




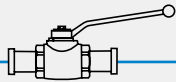
# MHA ZENTGRAF

FlowControl Technology

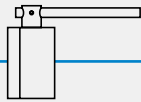
2-way threaded  
DN 4 to DN 50



2-way SAEFS  
DN 4 to DN 50



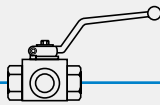
2-way flanged  
DN 15 to DN 200



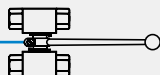
3- and 4-way  
DN 6 to DN 40



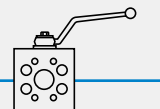
3-way selector  
DN 6 to DN 50



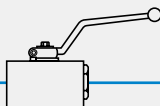
Combinations  
DN 6 to DN 50



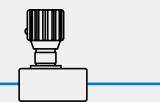
Intermediate  
DN 13 to DN 50



Manifold  
DN 6 to DN 50



Flow control  
DN 6 to DN 50



[www.mha-zentgraf.com](http://www.mha-zentgraf.com)  
[info@mha-zentgraf.com](mailto:info@mha-zentgraf.com)

After a custom solution?  
- Speak with us now!