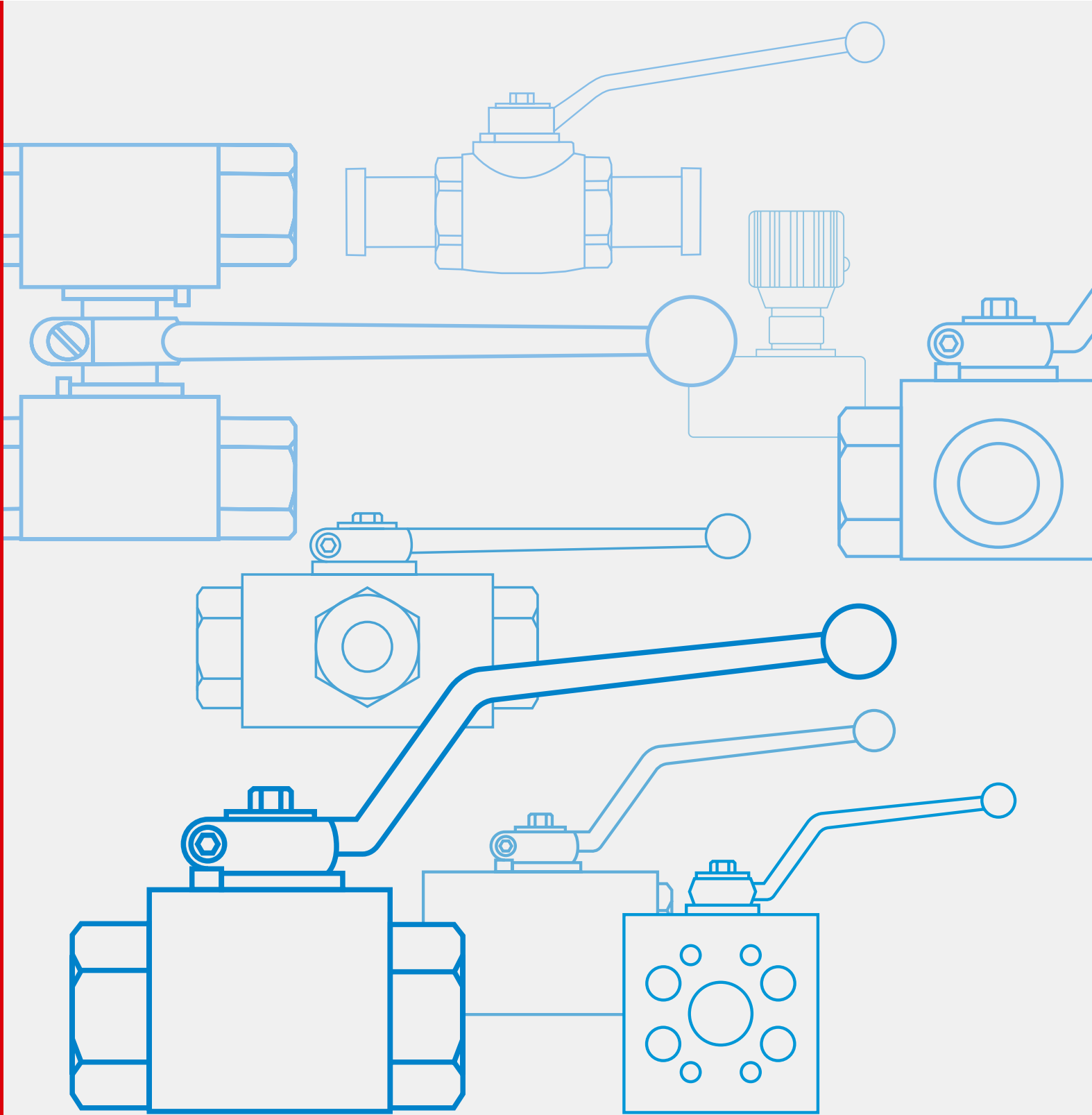
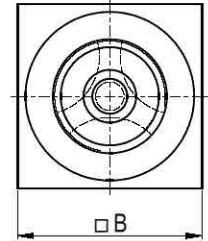
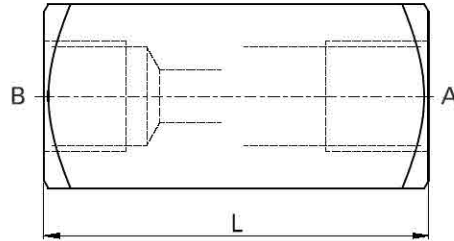
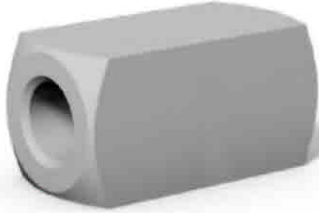




MHA ZENTGRAF
FlowControl Technology





AVAILABLE SIZES

DN6 - DN40 (1/8" to 2")

CONNECTIONS

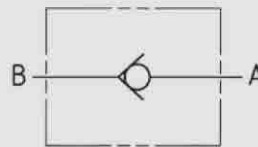
DIN ISO 228 Female thread,
ANSI B1.20.1 NPT Female thread,
SAE J 514 ISO/DIS 11926-1 Female thread

MATERIAL CODE DESCRIPTION

Materials	1	4
Body	Steel	Stainless Steel
Tmin / Tmax	-20°C / 100°C	-20°C / 100°C
Cracking pressure	0,5 bar*	0,5 bar*

*Option: Cracking pressure P_Ö 4,5 bar

PORTING PATTERN

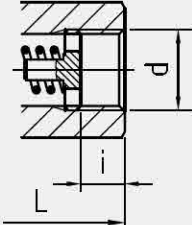


GENERAL DIMENSIONS

Type	B
RV-DN6	16
RV-DN8	25
RV-DN10	30
RV-DN12	35
RV-DN16	45
RV-DN20	50
RV-DN25	60
RV-DN30	70
RV-DN40	90

Check valve for piping-system assembly Steel / Stainless steel

RV

CONNECTION TYPE	DIMENSIONS					ORDER CODE PER MATERIAL COMBINATION			
	Type	L	i	d	Weight [Kg]	PN [bar]	1	PN [bar]	4
DIN ISO 228 FEMALE THREAD 	RV-DN6-G1/8	45	9,5	G1/8	0,10	500	18680*	350	35030
	RV-DN8-G1/4	55	13,5	G1/4	0,20	500	18646*	350	33963
	RV-DN10-G3/8	65	13,5	G3/8	0,40	500	18681*	350	33962
	RV-DN12-G1/2	73	15,5	G1/2	0,70	500	18682*	350	24828
	RV-DN16-G3/4	88	17,5	G3/4	1,20	500	18683*	350	18321
	RV-DN20-G1	127	19,5	G1	2,00	500	18684*	350	28592
	RV-DN25-G1 1/4	143	21,5	G1 1/4	3,30	400	18685*	350	25355
	RV-DN30-G1 1/2	143	23,5	G1 1/2	4,20	350	18687*	350	20786
	RV-DN40-G2	165	25,5	G2	7,20	350	18689*	350	31615

CONNECTION TYPE	DIMENSIONS					ORDER CODE PER MATERIAL COMBINATION			
	Type	L	i	d	Weight [Kg]	PN [bar]	1	PN [bar]	4
ANSI B1.20.1 NPT FEMALE THREAD 	RV-DN6-1/8"NPT	45	9,5	1/8"NPT	0,10	500	31006*	350	37753
	RV-DN8-1/4"NPT	55	13,5	1/4"NPT	0,20	500	26450*	350	29423
	RV-DN10-3/8"NPT	65	13,5	3/8"NPT	0,40	500	24442*	350	37754
	RV-DN12-1/2"NPT	73	15,5	1/2"NPT	0,60	500	30367*	350	31407
	RV-DN16-3/4"NPT	88	17,5	3/4"NPT	1,20	500	30640*	350	31408
	RV-DN20-1"NPT	127	19,5	1"NPT	2,00	500	26489	350	29909
	RV-DN25-1 1/4"NPT	143	21,5	1 1/4"NPT	3,00	400	26520	350	37755
	RV-DN30-1 1/2"NPT	143	23,5	1 1/2"NPT	4,20	350	26540	350	29524
	RV-DN40-2"NPT	165	25,5	2"NPT	8,00	350	25554	350	37756

CONNECTION TYPE	DIMENSIONS					ORDER CODE PER MATERIAL COMBINATION			
	Type	L	i	d	Weight [Kg]	PN [bar]	1	PN [bar]	4
SAE J514/ISO/DIS11926-1 FEMALE THREAD 	RV-DN8-7/16"UNF	54,5	13	7/16"-20 UNF	0,20	500	26451	350	37757
	RV-DN10-9/16"UNF	65	13,5	9/16"-18 UNF	0,40	500	26459	350	37758
	RV-DN12-3/4"UNF	73	15,5	3/4"-16 UNF	0,60	500	26465	350	37759
	RV-DN16-1 1/16"UNF	97,5	20	1 1/16"-12 UN	1,20	500	26479	350	37760
	RV-DN20-1 5/16"UN	127,5	20	1 5/16"-12 UN	1,90	500	26490	350	37761
	RV-DN25-1 5/8"UN	141,5	20	1 5/8"-12 UN	3,00	400	26522	350	37762
	RV-DN30-1 7/8"UN	139,5	20	1 7/8"-12 UN	3,90	350	26541	350	37763
	RV-DN40-2 1/2"UN	165	21	2 1/2"-12 UN	7,60	350	31793	350	37764

Please note the pressure ratings of the tube connections!

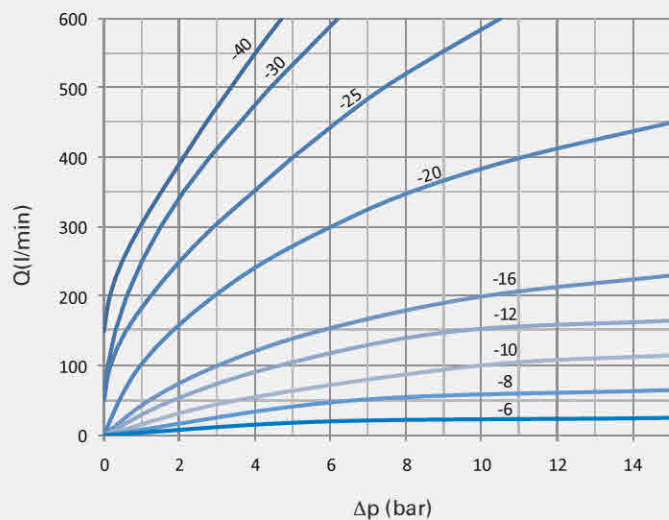
*Article usually in stock.

FLOW CHARACTERISTICS

The flow values are valid for hydraulic oil (spissitude 880 kg/m³) and the kinematic viscosity ν of 35 mm²/s.

Flow direction: B-A

Δp characteristic line free flow through check valve

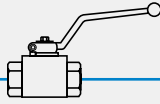




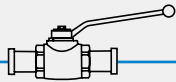
MHA ZENTGRAF

FlowControl Technology

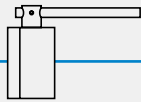
2-way threaded
DN 4 to DN 50



2-way SAEFS
DN 4 to DN 50



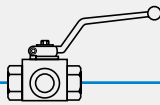
2-way flanged
DN 15 to DN 200



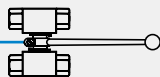
3- and 4-way
DN 6 to DN 40



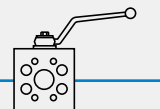
3-way selector
DN 6 to DN 50



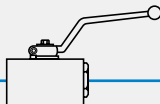
Combinations
DN 6 to DN 50



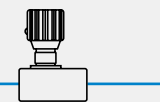
Intermediate
DN 13 to DN 50



Manifold
DN 6 to DN 50



Flow control
DN 6 to DN 50



www.mha-zentgraf.com
info@mha-zentgraf.com

After a custom solution?
- Speak with us now!