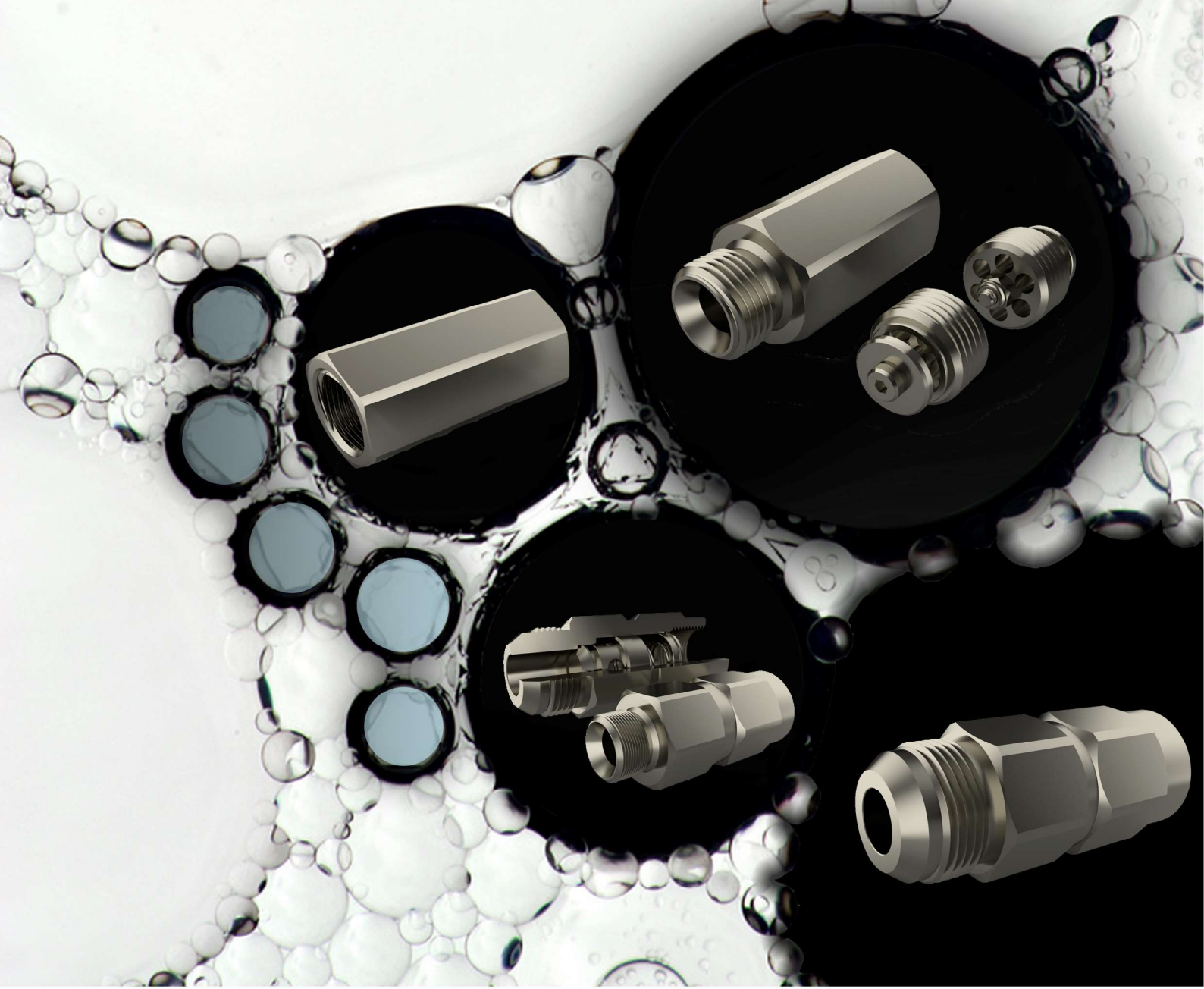




www.inteva.es

CHECK VALVES





504 SERIES ATR

CHECK VALVES



TECHNICAL SPECIFICATIONS

Features: Designed to avoid back flow in circuit.
Metal closure (no O-ring): Steel construction without seals or other components to wear out.
High resistance to pressure peaks.
5 psi standard opening pressure. Other opening pressures on request.

Available Size: 1/8" a 2"

Operating pressure: Up to 300 Bar

Materials: Body: Carbon Steel EN 10277-3
Stainless Steel 316

O-rings: NBR / VITON / EPDM

Springs: EN 10270-3/-1/SH

Available Threads: BSP / NPTF*

Closing System: Poppet (without o-ring) / Available with O-rings

Applications: Designed for oil hydraulic (Group II- 2014/68/EU)

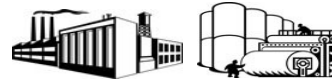
Interchangeable: GROMELLE 4000 / DMIC CVH
PARKER DC / SNAP TITE CPIFF

Working Temperature (O-rings)

| | NBR | Viton | EPDM |
|---|--------|--------|--------|
| + | +100°C | +200°C | +150°C |
| - | -30°C | -10°C | -40°C |

Sectors:

Carbon Steel → Industrial



Stainless Steel → Industrial / Chemical / Offshore



*On request and minimum quantity.

MODEL STRUCTURE

Example:

504.110006 AG

| Series | Materials | Closing | O-ring | Opening pressure ± 0,3 | Size (S) | Thread |
|--------|-------------------------|----------|---------------------|------------------------|----------|---|
| 504. | 1 Carbon St. 2 SS316 | 1 Poppet | 0 Without | 00 0.34 Bar / 5 psi | 0 4 | 2 letters as per Table of Threads |
| | | | 1 NBR (90Sh) | 10 1 Bar / 14psi | 1 6 | |
| | 2 VITON | | 25 2.5 Bar / 36 psi | 2 10 | | |
| | 3 EPDM | | 45 4.5 Bar / 65 psi | 3 13 | | |
| | | | 60 6 Bar / 87 psi | 4 20 | | |
| | | | 80 8 Bar / 115 psi | 5 25 | | |
| | | | 99 10 Bar / 145 psi | 6 32 | | |
| | | | | 7 40 | | |
| | | | | 8 50 | | |
| | | | | | | |
| | | | | | 1 1/2" | |
| | | | | | 2" | |

504-1

INTEVA reserves the right to make modifications to its products without prior notice. Any external or internal alterations to our products will automatically void the warranty.



v11

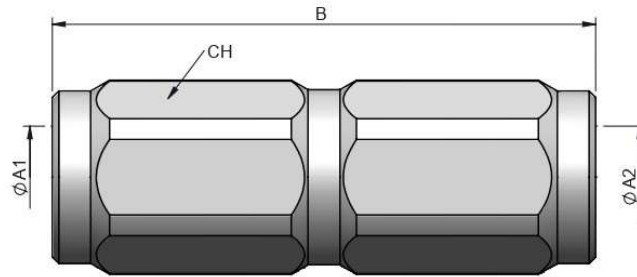


504 SERIES ATR


CHECK VALVES
CARBON STEEL



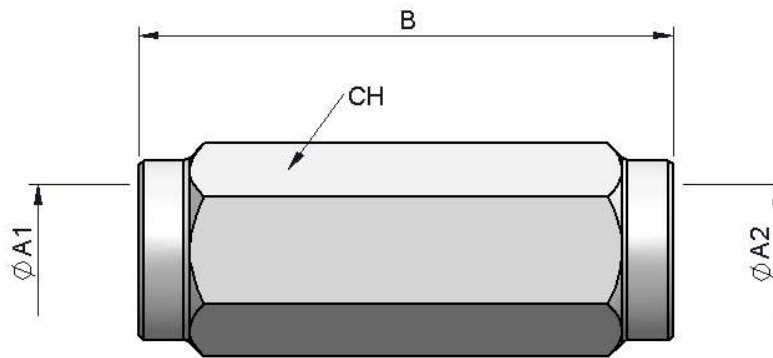
(S) 04 - 1/8"




STANDARD MODELS

| (S) | ØA1/ØA2 | REF. |  | CH | B |
|-----|-----------|--------------|--|----|------|
| 04 | 1/8" BSP | 504.110000AA | 300 | 14 | 42.5 |
| | 1/8" NPTF | 504.110000BA | | | |

(S) 06 - 1/4"



STANDARD MODELS

| (S) | ØA1/ØA2 | REF. |  | CH | B |
|-----|-----------|--------------|--|----|----|
| 6 | 1/4" BSP | 504.110001AB | 300 | 19 | 56 |
| | 1/4" NPTF | 504.110001BB | | | |

504-2

INTEVA reserves the right to make modifications to its products without prior notice. Any external or internal alterations to our products will automatically void the warranty.



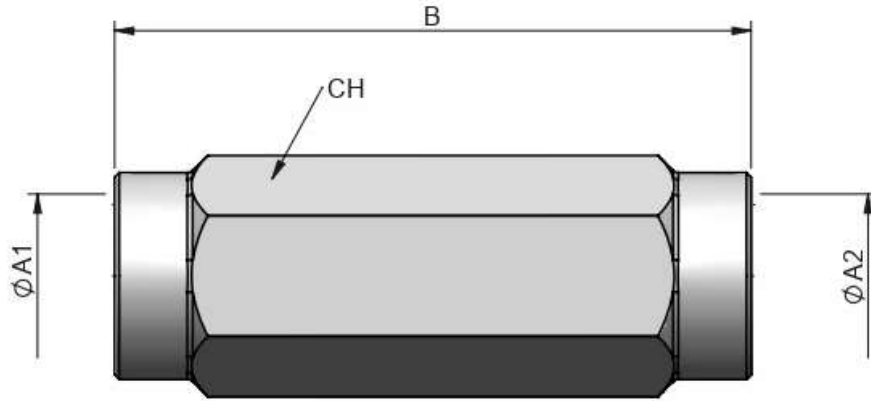


504 SERIES ATR


CHECK VALVES
CARBON STEEL



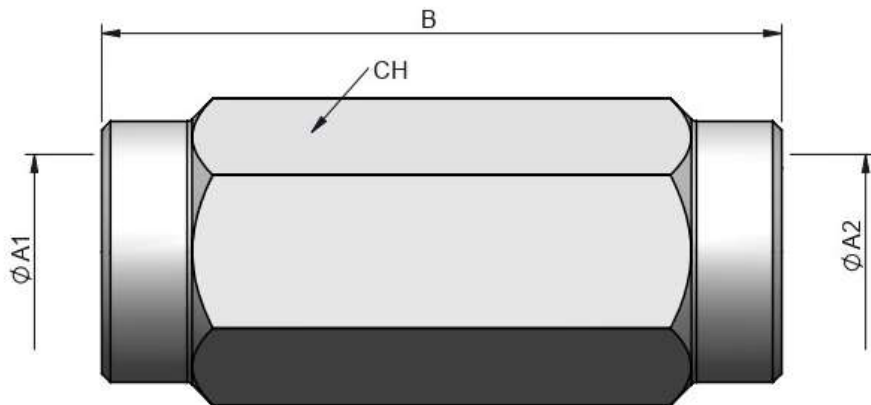
(S) 10 - 3/8"




STANDARD MODELS

| (S) | ØA1/ØA2 | REF. |  | CH | B |
|-----|-----------|--------------|--|----|------|
| 10 | 3/8" BSP | 504.110002AC | 300 | 22 | 67.5 |
| | 3/8" NPTF | 504.110002BC | | | |

(S) 13 - 1/2"



STANDARD MODELS

| (S) | ØA1/ØA2 | REF. |  | CH | B |
|-----|-----------|--------------|--|----|----|
| 13 | 1/2" BSP | 504.110003AD | 300 | 30 | 77 |
| | 1/2" NPTF | 504.110003BD | | | |

504-3

INTEVA reserves the right to make modifications to its products without prior notice. Any external or internal alterations to our products will automatically void the warranty.



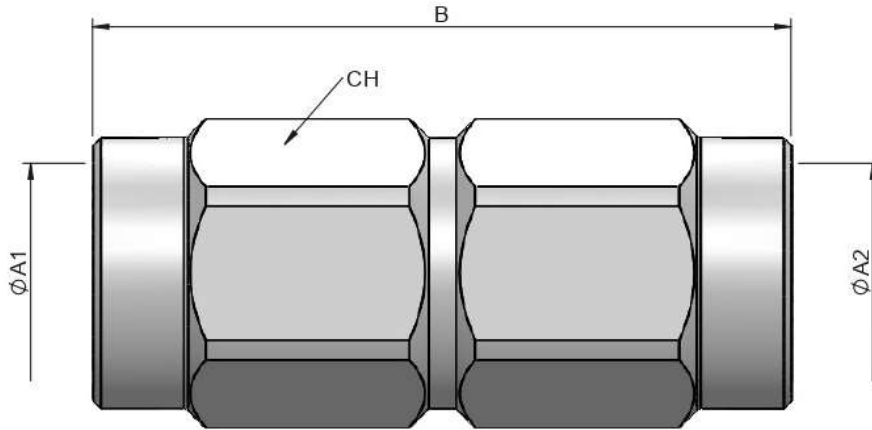


504 SERIES ATR


CHECK VALVES
CARBON STEEL



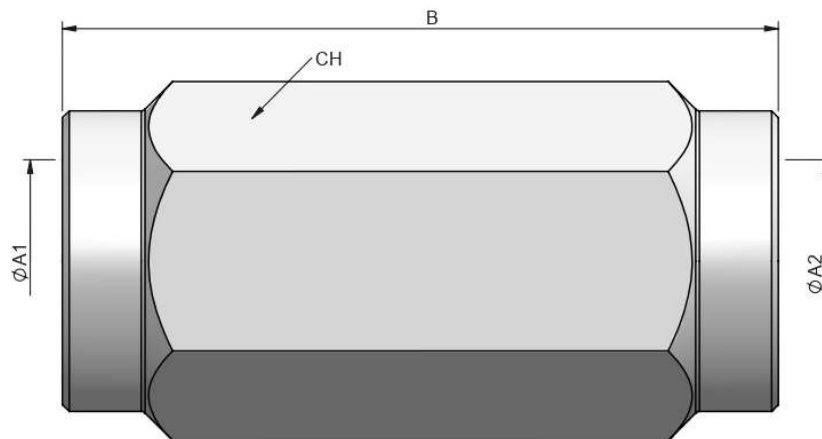
(S) 20 - 3/4"




STANDARD MODELS

| (S) | ØA1/ØA2 | REF. |  | CH | B |
|-----|-----------|--------------|---|----|----|
| 20 | 3/4" BSP | 504.110004AE | 300 | 36 | 90 |
| | 3/4" NPTF | 504.110004BE | | | |

(S) 25 - 1"



STANDARD MODELS

| (S) | ØA1/ØA2 | REF. |  | CH | B |
|-----|---------|--------------|--|----|-----|
| 25 | 1" BSP | 504.110005AF | 300 | 46 | 106 |
| | 1" NPTF | 504.110005BF | | | |

504-4

INTEVA reserves the right to make modifications to its products without prior notice. Any external or internal alterations to our products will automatically void the warranty.



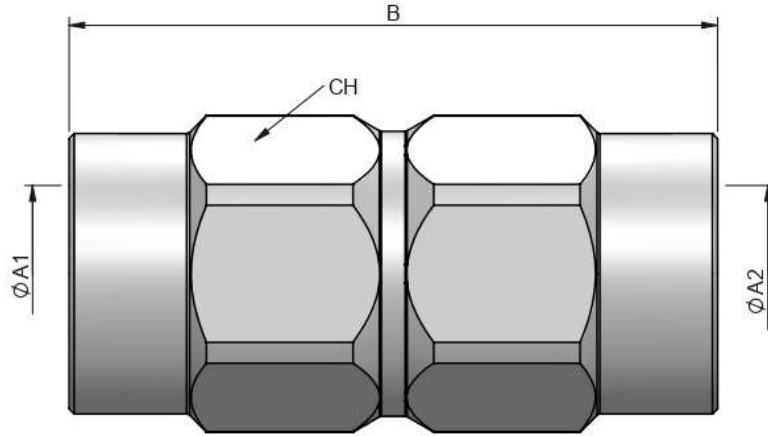


504 SERIES ATR

CHECK VALVES
CARBON STEEL



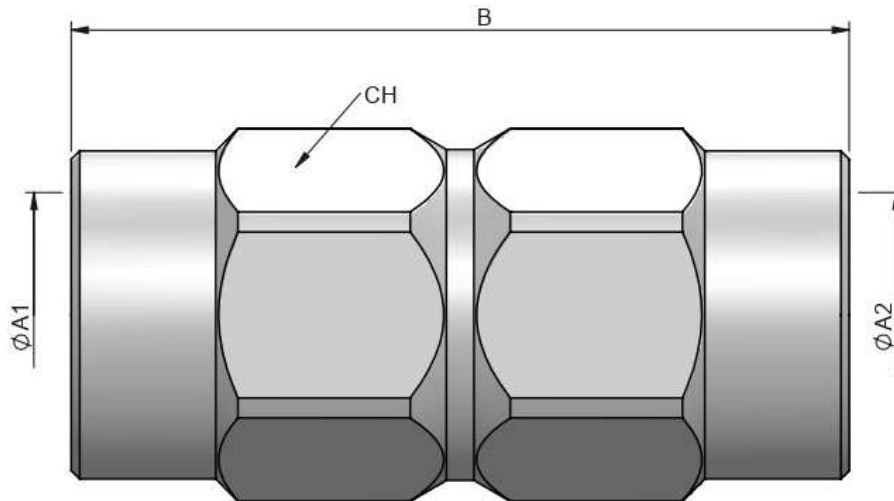
(S) 32 – 1 1/4”



STANDARD MODELS

| (S) | ØA1/ØA2 | REF. | | CH | B |
|-----|-------------|--------------|-----|----|-----|
| 32 | 1 1/4" BSP | 504.110006AG | 300 | 55 | 125 |
| | 1 1/4" NPTF | 504.110006BG | | | |

(S) 40 – 1 1/2”



STANDARD MODELS

| (S) | ØA1/ØA2 | REF. | | CH | B |
|-----|-------------|--------------|-----|----|-----|
| 40 | 1 1/2" BSP | 504.110007AH | 300 | 60 | 140 |
| | 1 1/2" NPTF | 504.110007BH | | | |

504-5

INTEVA reserves the right to make modifications to its products without prior notice. Any external or internal alterations to our products will automatically void the warranty.



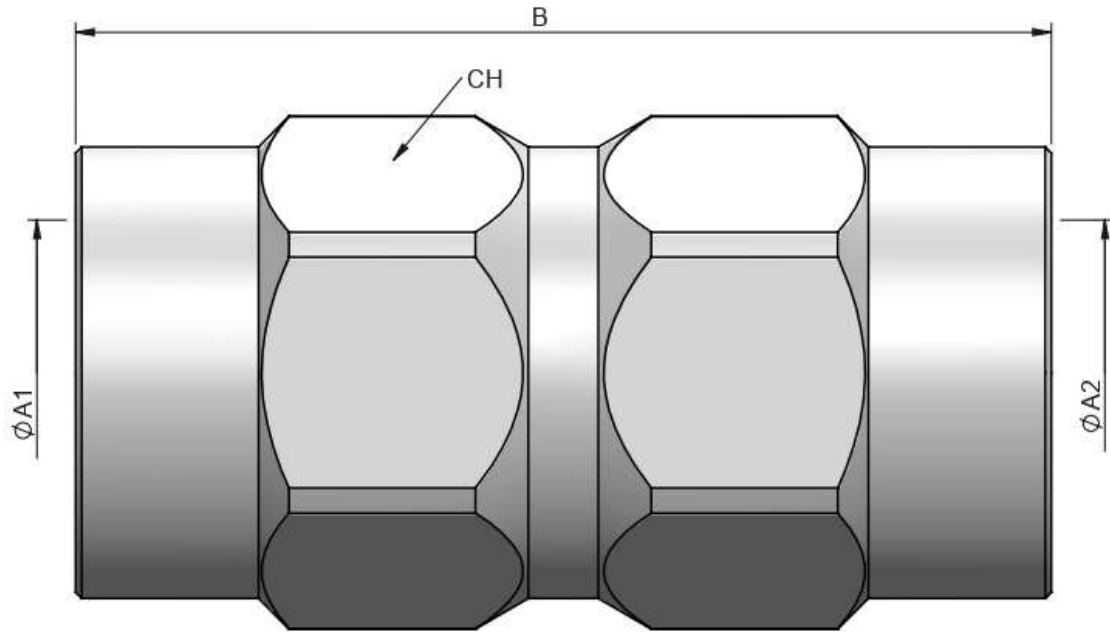


504 SERIES ATR


CHECK VALVES
CARBON STEEL



(S) 50 – 2"



STANDARD MODELS

| (S) | ØA1/ØA2 | REF. |  | CH | B |
|-----|---------|--------------|--|----|-----|
| 50 | 2" BSP | 504.110008AI | 200 | 75 | 160 |
| | 2" NPTF | 504.110008BI | | | |

504-6

INTEVA reserves the right to make modifications to its products without prior notice. Any external or internal alterations to our products will automatically void the warranty.



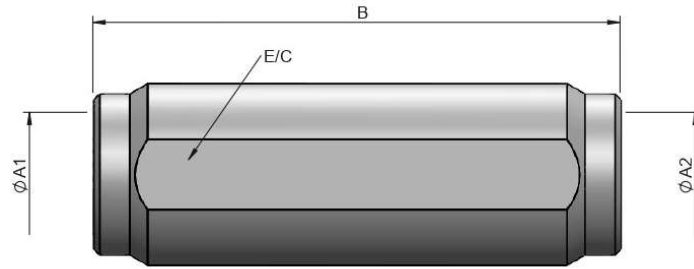


504 SERIES ATR


CHECK VALVES
SS316



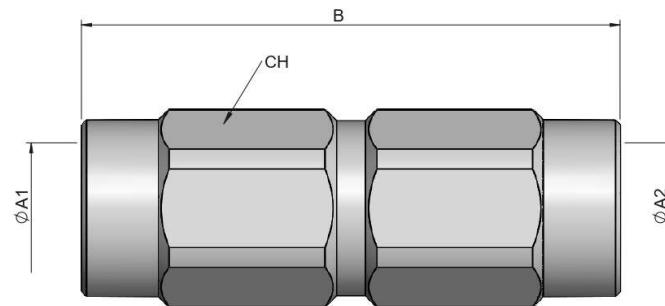
(S) 04 - 1/8"




STANDARD MODELS

| (S) | $\varnothing A1/\varnothing A2$ | REF. |  | CH | B |
|-----|---------------------------------|--------------|--|----|------|
| 04 | 1/8" BSP | 504.210000AA | 300 | 14 | 42.5 |
| | 1/8" NPTF | 504.210000BA | | | |

(S) 06 - 1/4"



STANDARD MODELS

| (S) | $\varnothing A1/\varnothing A2$ | REF. |  | CH | B |
|-----|---------------------------------|--------------|--|----|----|
| 6 | 1/4" BSP | 504.210001AB | 300 | 19 | 56 |
| | 1/4" NPTF | 504.210001BB | | | |

504-7

INTEVA reserves the right to make modifications to its products without prior notice. Any external or internal alterations to our products will automatically void the warranty.



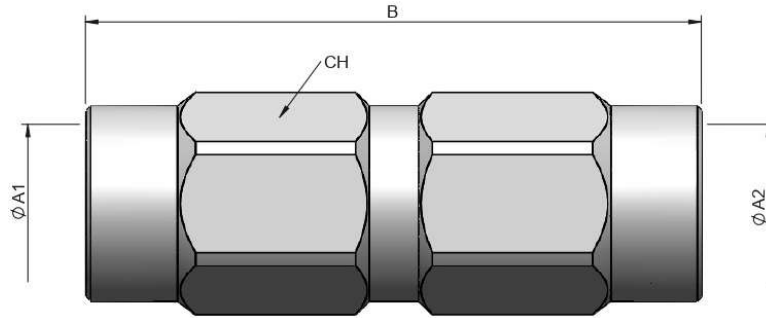


504 SERIES ATR


CHECK VALVES
SS316



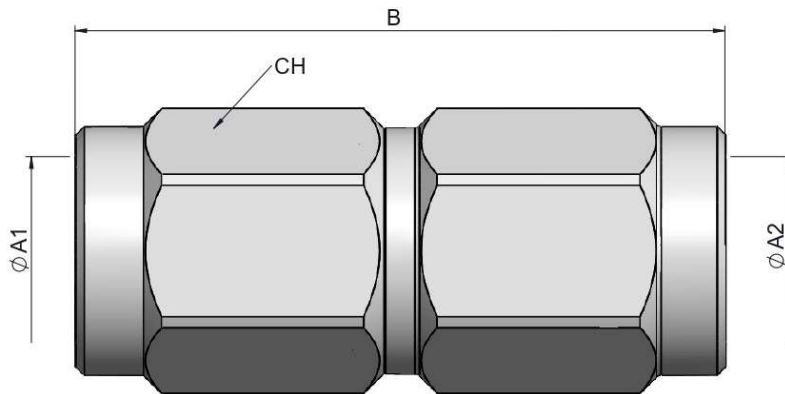
(S) 10 - 3/8"




STANDARD MODELS

| (S) | ØA1/ØA2 | REF. |  | CH | B |
|-----|-----------|--------------|--|----|------|
| 10 | 3/8" BSP | 504.210002AC | 300 | 22 | 67.5 |
| | 3/8" NPTF | 504.210002BC | | | |

(S) 13 - 1/2"



STANDARD MODELS

| (S) | ØA1/ØA2 | REF. |  | CH | B |
|-----|-----------|--------------|--|----|----|
| 13 | 1/2" BSP | 504.210003AD | 300 | 30 | 77 |
| | 1/2" NPTF | 504.210003BD | | | |

504-8

INTEVA reserves the right to make modifications to its products without prior notice. Any external or internal alterations to our products will automatically void the warranty.



v11

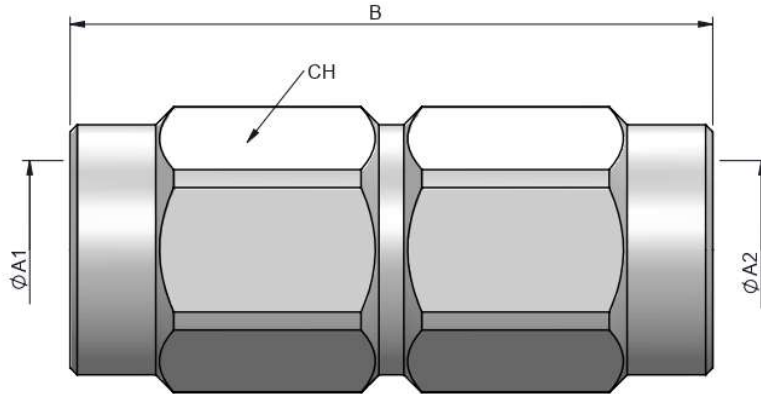


504 SERIES ATR


CHECK VALVES
SS316



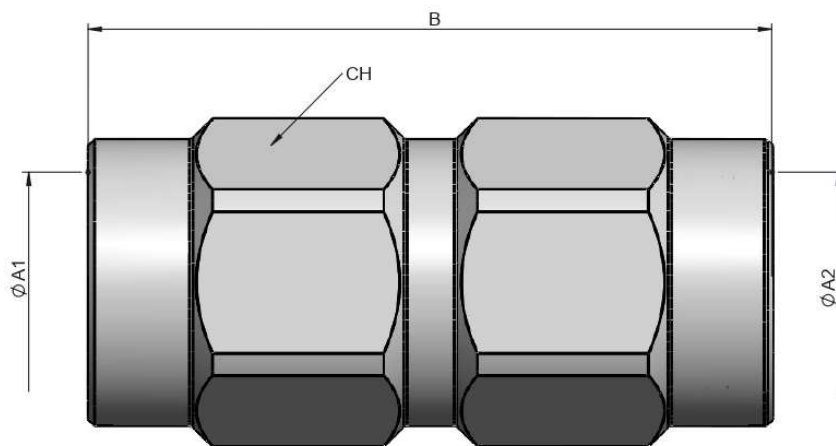
(S) 20 - 3/4"




STANDARD MODELS

| (S) | ØA1/ØA2 | REF. |  | CH | B |
|-----|-----------|--------------|---|----|----|
| 20 | 3/4" BSP | 504.210004AE | 300 | 36 | 90 |
| | 3/4" NPTF | 504.210004BE | | | |

(S) 25 - 1"



STANDARD MODELS

| (S) | ØA1/ØA2 | REF. |  | CH | B |
|-----|---------|--------------|--|----|-----|
| 25 | 1" BSP | 504.210005AF | 300 | 46 | 106 |
| | 1" NPTF | 504.210005BF | | | |

504-9

INTEVA reserves the right to make modifications to its products without prior notice. Any external or internal alterations to our products will automatically void the warranty.



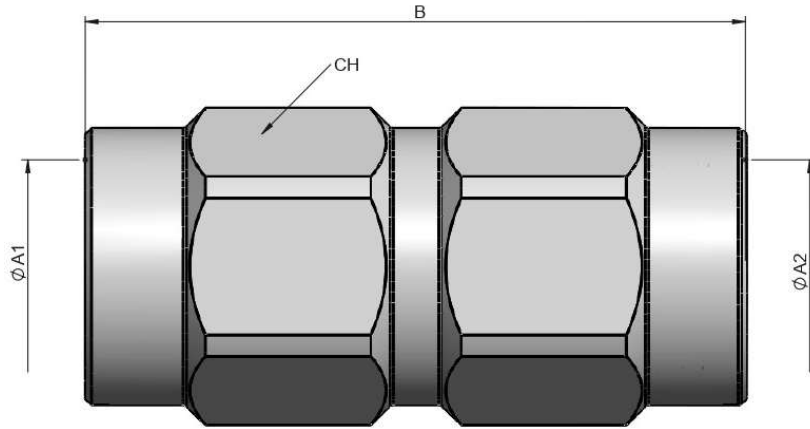


504 SERIES ATR


CHECK VALVES
SS316



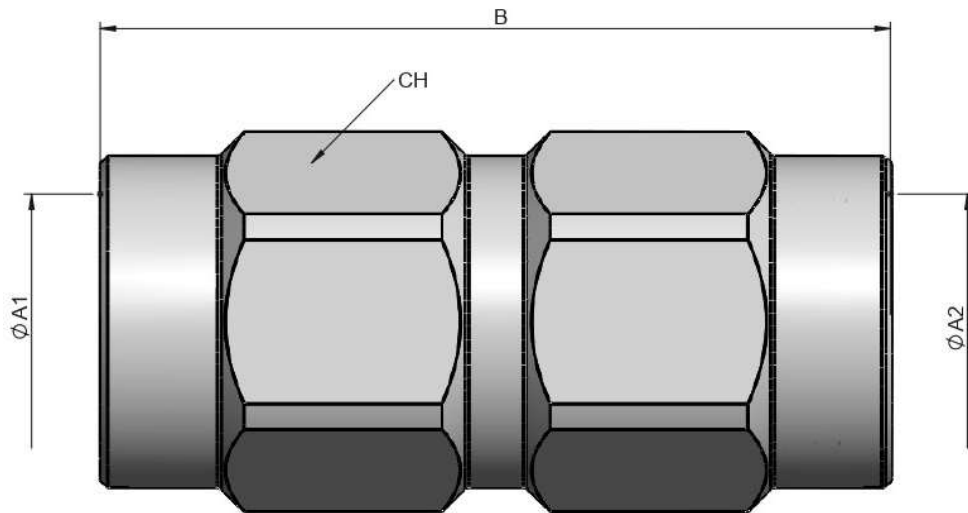
(S) 32 – 1 1/4"




STANDARD MODELS

| (S) | ØA1/ØA2 | REF. |  | CH | B |
|-----|-------------|--------------|--|----|-----|
| 32 | 1 1/4" BSP | 504.210006AG | 300 | 55 | 125 |
| | 1 1/4" NPTF | 504.210006BG | | | |

(S) 40 – 1 1/2"



STANDARD MODELS

| (S) | ØA1/ØA2 | REF. |  | CH | B |
|-----|-------------|--------------|--|----|-----|
| 40 | 1 1/2" BSP | 504.210007AH | 300 | 60 | 140 |
| | 1 1/2" NPTF | 504.210007BH | | | |

504-10

INTEVA reserves the right to make modifications to its products without prior notice. Any external or internal alterations to our products will automatically void the warranty.



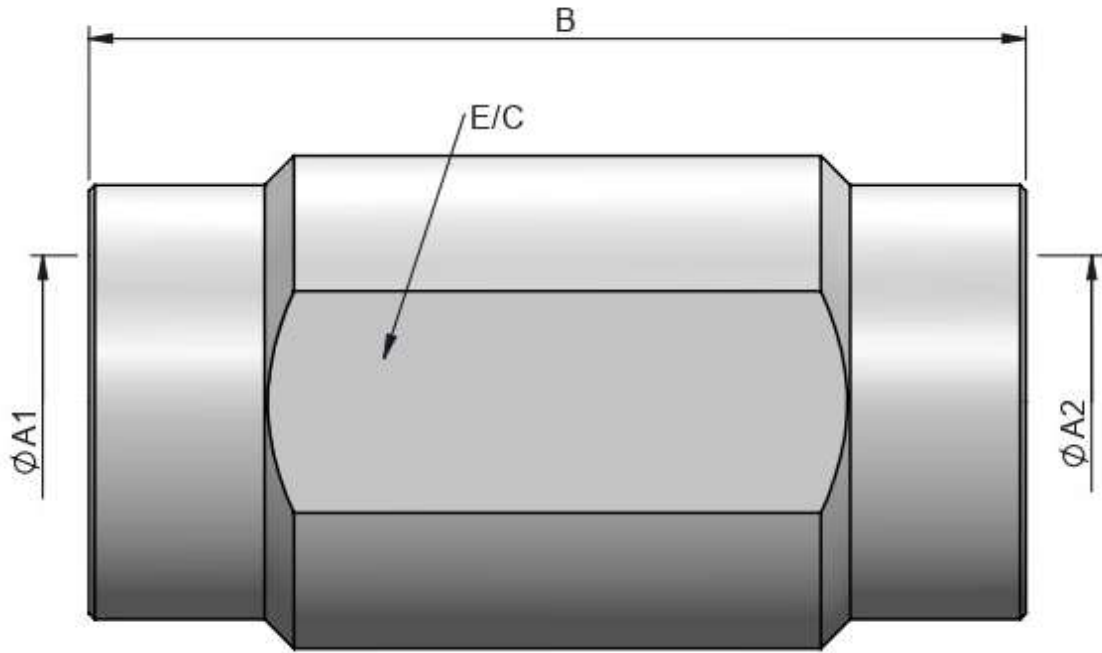


504 SERIES ATR


CHECK VALVES
SS316



(S) 50 – 2"



STANDARD MODELS

| (S) | ØA1/ØA2 | REF. |  | E/C | B |
|-----|---------|--------------|--|-----|-----|
| 50 | 2" BSP | 504.210008AI | 200 | 75 | 160 |
| | 2" NPTF | 504.210008BI | | | |

504-11

INTEVA reserves the right to make modifications to its products without prior notice. Any external or internal alterations to our products will automatically void the warranty.





504 SERIES ATR

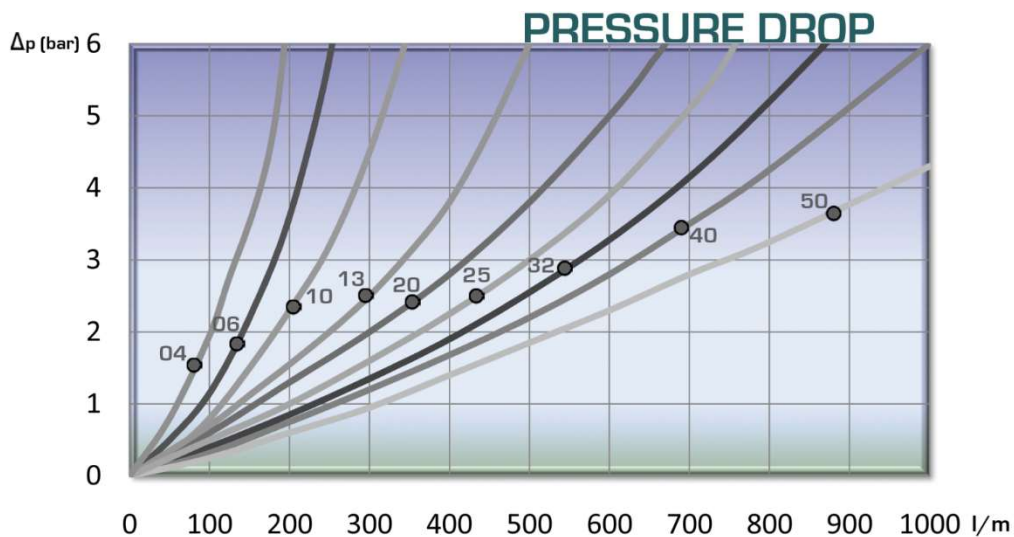
CARBON STEEL & SS316



TECHNICAL DATA

| (S) | Max. Rated Flow | Max. Working Pressure | Min. Burst Pressure |
|-----|-----------------|-----------------------|---------------------|
| | l/m / GPM | Bar / psi | Bar / psi |
| 04 | 8 / 2.11 | 300 / 4350 | 1200 / 17400 |
| 06 | 26 / 6.87 | 300 / 4350 | 1200 / 17400 |
| 10 | 44 / 11.6 | 300 / 4350 | 1200 / 17400 |
| 13 | 90 / 23.85 | 300 / 4350 | 1200 / 17400 |
| 20 | 152 / 40.2 | 300 / 4350 | 1200 / 17400 |
| 25 | 200 / 52.8 | 300 / 4350 | 1200 / 17400 |
| 32 | 370 / 97.8 | 300 / 4350 | 1200 / 17400 |
| 40 | 598 / 158 | 300 / 4350 | 1200 / 17400 |
| 50 | 875 / 231 | 200 / 2900 | 800 / 11600 |

Test performed according to ISO 18869



504-12

INTEVA reserves the right to make modifications to its products without prior notice. Any external or internal alterations to our products will automatically void the warranty.





C/ Berguedà nº 14-16 P.I. Can Bernadés Subirà
08130 Santa Perpètua de la Mogoda
BARCELONA (SPAIN)
Tel / Phone +34 93 560 79 43
Fax +34 93 574 30 94